

14 SECTION 17 TOWN 05 RANGE

ADAMS COUNTY

COUNTY CORNER NO: 59
 ROMPORTOL ID: 41705142000

PUBLIC LAND SURVEY MONUMENT RECORD

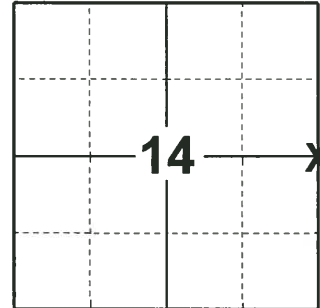
TYPE OF MONUMENT: HARRISON
 ADAMS COUNTY COORDINATES, NAD 83 (2007)

N. 210750.620

E. 520491.573

ELEVATION- _____ DATUM _____

FIELD WORK DATE: 01/07/2019



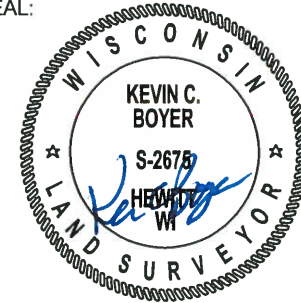
LOCATION
 (INDICATE CORNER BY "X")

BASIS FOR MONUMENT LOCATION

1977 - PLS-1274 MADE A THROUGH SEARCH OF ALL PREVIOUS ADAMS COUNTY SURVEY RECORDS. FOUND COPY OF ADAMS COUNTY DEPUTY SURVEYORS NOTES OF "BARRETT" DATED AUGUST 18, 1901. BARRETT HAD RAN COMPLETE EAST LINE OF ADJOINING SECTION 14-17-05. PLS 1274 ALSO RECOVERED NOTES BY M.C. SMITH DATED JAN. 7, 1916 WHERE HE HAD SURVEYED THE NORTH 1/2 OF N.E. 1/4 SEC 14-17-05. PLS 1274 RAN AN EXTENSIVE EDM TRAVERSE OF THE ENTIRE SECTION 13-17-05 FROM BARRETTS NOTES OF AUG. 18, 1901. HE MEASURED 39 CHAINS AND 58 LINKS FROM THE IDENTIFIED S.W. CORNER 13-17-05 TO THE IDENTIFIED W 1/4 CORNER 13-17-05. BARRETT DID NOT TAKE ANY BEARING OR DISTANCE TIES AT THE IDENTIFIED WEST 1/4 OF 13-17-05. FROM PLS 1274 EXTENSIVE EDM RANDOM TRAVERSE PLS 1274 COMPUTED TO THE LOCATION OF THE WEST 1/4 CORNER USING THE PREVIOUSLY ESTABLISHED S.W. CORNER OF SECTION 13 AND EXISTING FENCE LINE AT THE N.W. CORNER 13-17-05 FOR LINE AND BARRETTS RECORD DISTANCE. AT THAT POINT PLS 1274 FOUND EVIDENCE OF VERY OLD LOOPED BARBED WIRE AND THE BASE OF THE OLD FENCE CORNER POST BARRETTS DISTANCE FIT EXACTLY TO THE CORNER. PLS-1274 MONUMENT THE LOCATION OF THE OLD FENCE CORNER POST AND ADJOINING LOOPED WIRE.

2019 - PLS-2675 FOUND HARRISON MONUMENT FLUSH WITH THE GROUND AND 2 WITNESS TREES. THE MONUMENT AGREES WITH BOTH WITNESS TREES. ACCEPTED THE HARRISON MONUMENT AS THE CORNER. SET 4 NEW TIES AND MEASURED TO THE EXISTING WITNESS TREES.

SEAL:

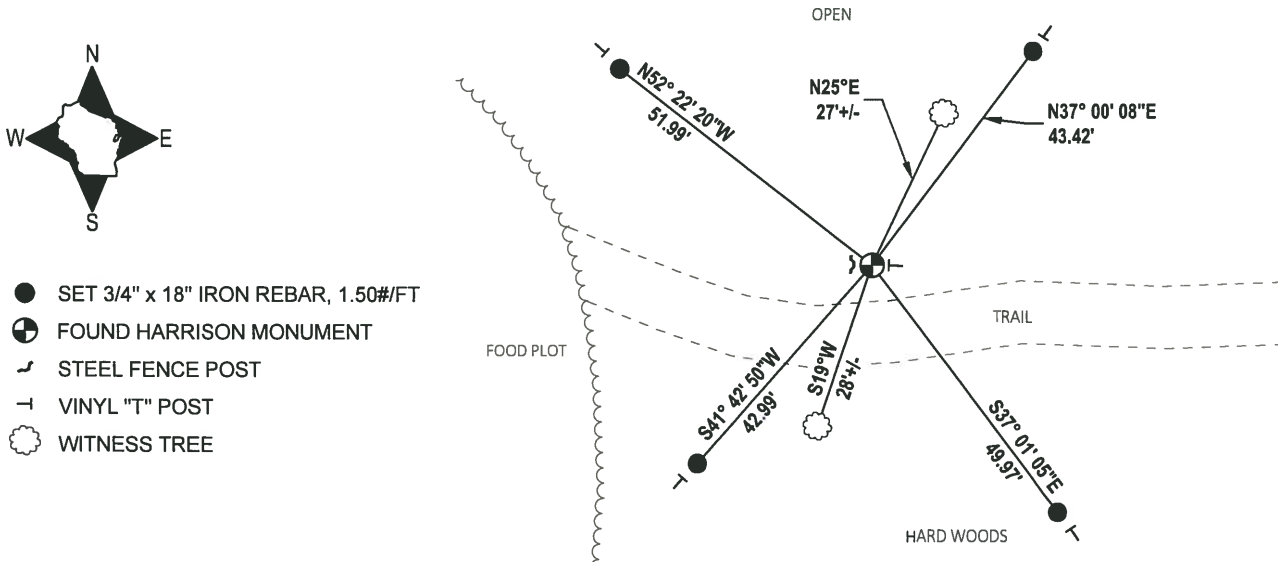


DATA SHOWN HERE ON THIS TIE SHEET IS CORRECT AND COMPLETE TO THE BEST OF MY KNOWLEDGE AND BELIEF.

PROFESSIONAL LAND SURVEYOR

DATE 3/12/19

TIE SKETCH



- SET 3/4" x 18" IRON REBAR, 1.50#/FT
- ⊕ FOUND HARRISON MONUMENT
- ┌ STEEL FENCE POST
- └ VINYL "T" POST
- ☼ WITNESS TREE

ADAMS COUNTY

Survey Monument Record

TYPE OF MONUMENT: HARRISON - STANDARD 1/4 CORNER

STATE PLANE COORDINATES: N _____

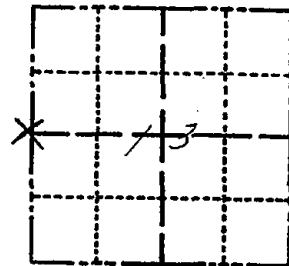
E _____

ELEVATION — M.S.L. DATUM: _____

THETA ANGLE: _____

FIELD BOOK: 565 PAGE 27

CORNER NO. 59
SECTION 13
TOWN 17
RANGE 5



LOCATION
(Indicated by 'X')



BASIS FOR MONUMENT LOCATION

(Use reverse side if necessary)

Show info such as: History of corner, with reference to Vol. and pg, dates, surveyor; exact description of monument replaced; if location computed, by taped or EDM traverse; landowner remarks, etc.

SEAL:

MADE THOROUGH SEARCH OF ALL PREVIOUS ADAMS Co. SURVEY RECORDS.
FOUND COPY OF ADAMS COUNTY DEPUTY SURVEYOR'S NOTES OF "BARRETT"
DATED AUGUST 18, 1901. BARRETT HAD RUN COMPLETE EAST LINE OF ADJOINING
SECTION 14-17-5. I ALSO RECOVERED NOTES BY M.R. SMITH DATED
JAN. 7, 1916 WHERE HE HAD SURVEYED THE NORTH 1/2 OF N.E. 1/4 SEC. 14-17-5.
I RAN AN EXTENSIVE E.D.M. TRAVERSE OF THE ENTIRE SECTION 13-17-5.
FROM BARRETT'S NOTES OF AUG. 18, 1901 HE MEASURED 39 CHAINS AND 58 LINKS
FROM THE IDENTIFIED S.W. COR. 13-17-5 TO THE IDENTIFIED W. 1/4 COR. 13-17-5.
BARRETT DID NOT TAKE ANY BEARING OR DISTANCE TIES AT THE IDENTIFIED W. 1/4 COR. 13-17-5.
FROM MY EXTENSIVE E.D.M. RANDOM TRAVERSE I COMPUTED
TO THE LOCATION OF THE W. 1/4 COR. USING THE PREVIOUSLY
ESTABLISHED S.W. COR. OF SECTION 13 & AN EXISTING FENCE
LINE AT THE N.W. COR. 13-17-5 FOR LINE AND BARRETT RECORD DISTANCE "OVER" 401' 12".

CERTIFIED CORRECT:

John A. Breneman
Registered Land Surveyor

DATE: NOVEMBER 1, 1977

TIE SKETCH

(Show at least four ties)

MON. & TIES OK
1116/81 RN-SK

NOTE: THE DIAMETER OF ALL TREES WERE TAPED AT GIRTH HEIGHT.

OVER

VERY OLD FENCE WIRE LYING ON GROUND.

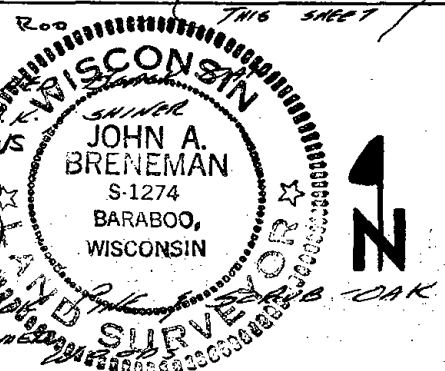
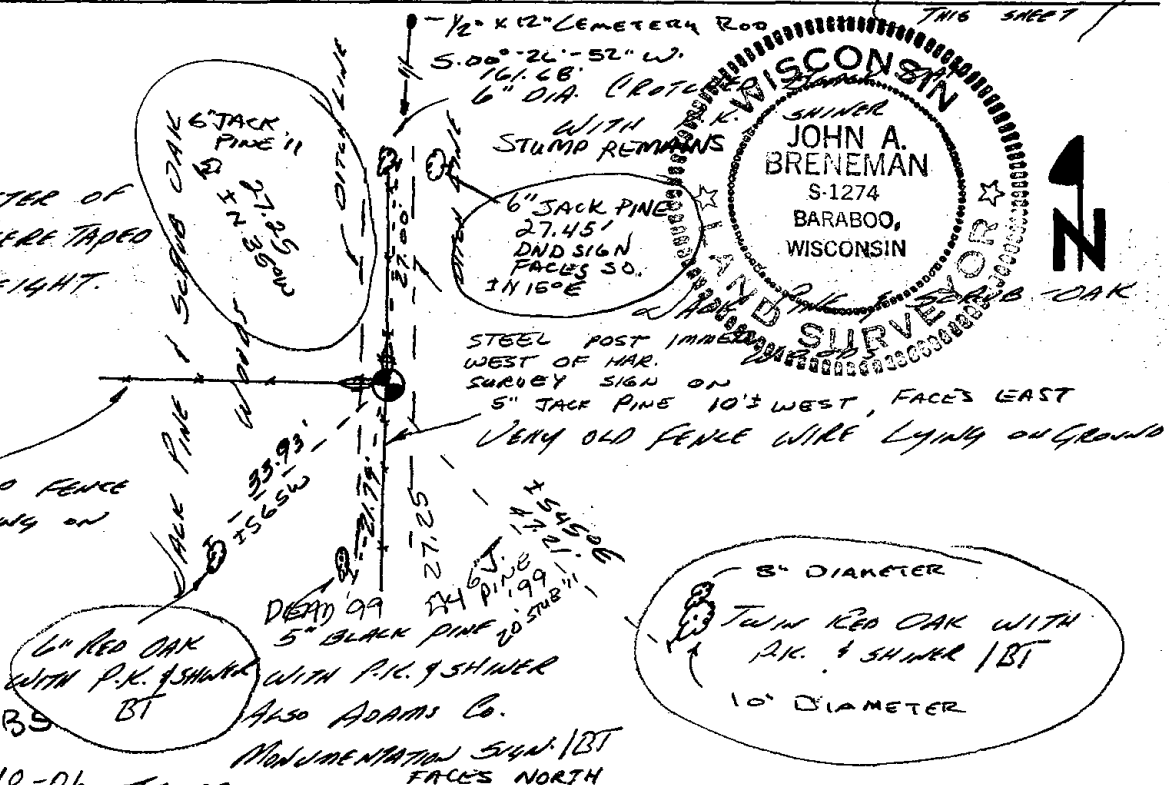
O.K.
10-21-85
S.S.

1-NEW 8-24-90 SS
ALL OK 1-10-95 JG-RS

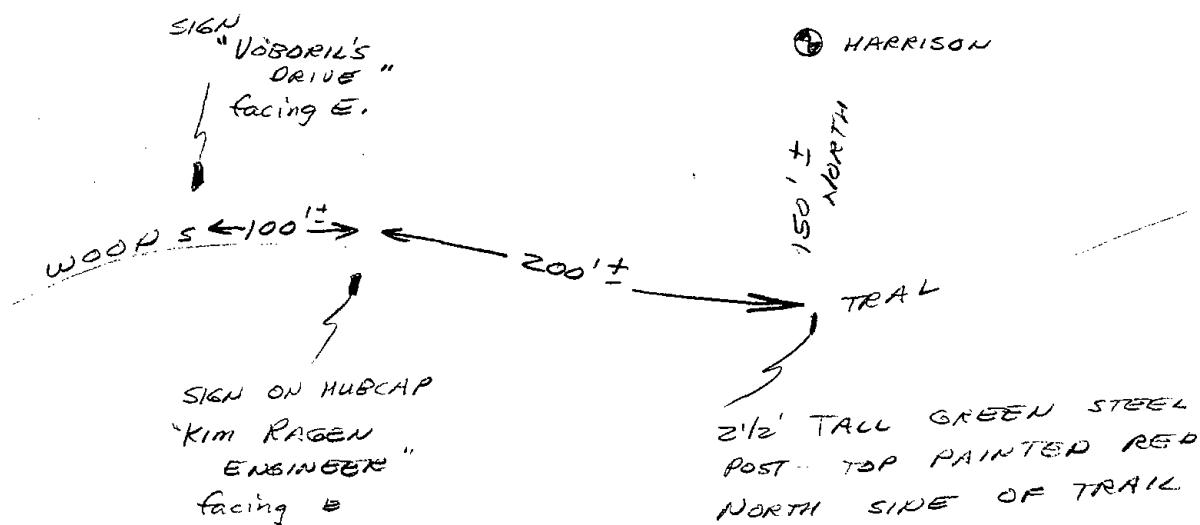
OVER

REVISED 1974

OK, 1-10-06 JG-SS



AT THIS POINT I FOUND EVIDENCE OF VERY OLD LOOPED BARBED WIRE AND THE BASE OF THE OLD FENCE CORNER POST BARRETT'S DISTANCE FIT EXACTLY TO THE CORNER. I MONUMENTED THE LOCATION OF THE OLD FENCE CORNER POST AND ADJOINING LOOPED WIRE.



1	NEW	TIE	TAKEN	12-28-99	SS
1	NEW	"	"	01-03-11	SS