

PUBLIC LAND SURVEY MONUMENT RECORD

TYPE OF MONUMENT: RAILROAD SPIKE
 ADAMS COUNTY COORDINATES, NAD 83 (2007)

N. 208007.583

E. 496822.408

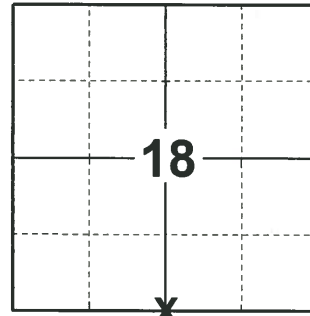
ELEVATION- DATUM

FIELD WORK DATE: 02/14/2019

BASIS FOR MONUMENT LOCATION

1981 - PLS-1444 CORNER WAS SET ON THE SOUTH LINE OF KENTDORF AVE. AND THE CENTERLINE OF THE TOWN ROAD AS INDICATED BY H.C. AMUNDSON IN HIS PLAT OF DELLWOOD.

2019 - PLS-2675 FOUND RAILROAD SPIKE FLUSH WITH THE ROAD SURFACE AND 1 WITNESS. REMOVED THE RAILROAD SPIKE AND FOUND NO OTHER EVIDENCE OF ANY ADDITIONAL MONUMENT. THE RAILROAD SPIKE LOCATION AGREES WITH THE WITNESS. ACCEPTED THE RAILROAD SPIKE LOCATION AS THE CORNER. RE-SET THE RAILROAD SPIKE AS THE CORNER. SET 4 NEW TIES AND MEASURED TO THE EXISTING WITNESS.



LOCATION

(INDICATE CORNER BY "X")

SEAL:



DATA SHOWN HERE ON THIS TIE SHEET IS CORRECT AND COMPLETE TO THE BEST OF MY KNOWLEDGE AND BELIEF.

PROFESSIONAL LAND SURVEYOR

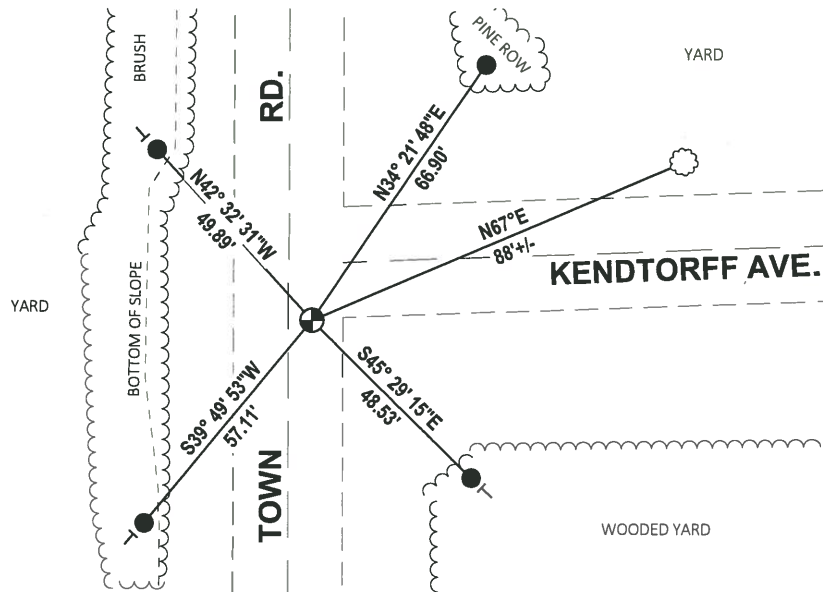
DATE 3/12/19

- TIE SKETCH

NOTE: THE CORNER LANDS 5'± EAST OF CENTERLINE OF TOWN RD. AND SOUTH 12'± SOUTH OF KENTDORFF AVE.



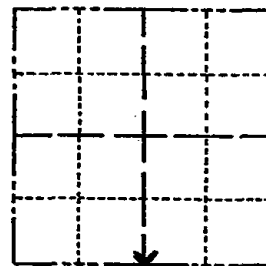
- SET 3/4" x 18" IRON REBAR, 1.50#/FT
- ⊕ FOUND RAILROAD SPIKE
- ┆ VINYL "T" POST
- WITNESS TREE



Government Land Corner Certificate

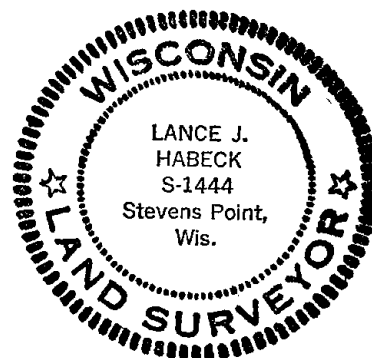
ADAMS County
 TYPE OF MONUMENT: HARRISON - R.R. SPIKE
 STATE PLANE COORDINATES: N _____
 E _____
 ELEVATION — M.S.L. DATUM: _____
 THETA ANGLE: _____
 FIELD BOOK: 76 PAGE 50
 DRAWN BY: LANCE J. HABECK

CORNER NO. 62
 SECTION 18
 TOWN 17
 RANGE 5



LOCATION
(Indicated by 'X')

SEAL:



BASIS FOR MONUMENT LOCATION

Show info such as: History of corner, with reference to Vol. and pg., dates, surveyor; exact description of monument replaced; if location computed, by taped or EDM traverse; landowner remarks, etc. (Use reverse side if necessary)

This corner was set on the south line of Kentdorf Ave. and the centerline of the Town road as indicated by H.C. Amundson in his plat of Dellwood.
 ALL OK HARRISON - RR SPIKE 6-25-90 JG
 ALL OK 8-24-94 JG-SS
 ALL OK 1-10-00, JG-SS
 OK 2-15-05 DA/JG
 2 NEW TIES - RR SPIKE 9-2-10

DATA SHOWN HERE ON
CERTIFIED CORRECT:

Lance J. Habeck
Registered Land Surveyor

DATE: 1/6/81

TIE SKETCH

Show at least four ties, also fence lines, roads, topo, size and type of witness trees and if off road - best way to arrive at corner.

