

PUBLIC LAND SURVEY MONUMENT RECORD

TYPE OF MONUMENT: HARRISON
ADAMS COUNTY COORDINATES, NAD 83 (2007)

N. 207945.106

E. 499485.634

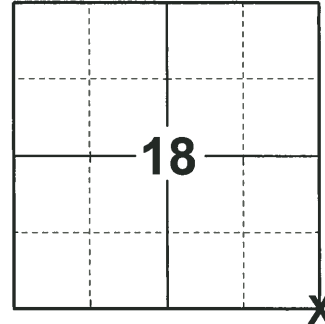
ELEVATION- - - - DATUM - - - -

FIELD WORK DATE: 02/14/2019

BASIS FOR MONUMENT LOCATION

1975 - PLS-1103 RAN EDM/TRANSIT TRAVERSE OF ENTIRE AREA TYING IN ALL THE EXISTING EVIDENCE IN THE AREA. PRORATED THE CORNER BETWEEN EXISTING EVIDENCE IN THE NORTH-SOUTH DIRECTION AND SET RECORD DISTANCE FROM THE EAST.

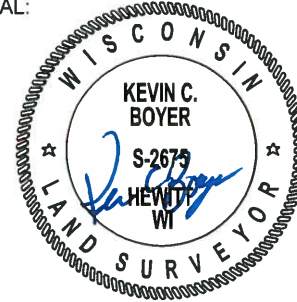
2019 - PLS-2675 FOUND HARRISON MONUMENT 8" BELOW THE ROAD SURFACE, 1 TIE, AND 1 WITNESS. THE MONUMENT AGREES WITH THE TIE AND WITNESS. ACCEPTED THE HARRISON MONUMENT AS THE CORNER. SET 3 NEW TIES AND MEASURED TO THE EXISTING TIE AND WITNESS.



LOCATION

(INDICATE CORNER BY "X")

SEAL:



DATA SHOWN HERE ON THIS TIE SHEET IS CORRECT AND COMPLETE TO THE BEST OF MY KNOWLEDGE AND BELIEF.

PROFESSIONAL LAND SURVEYOR

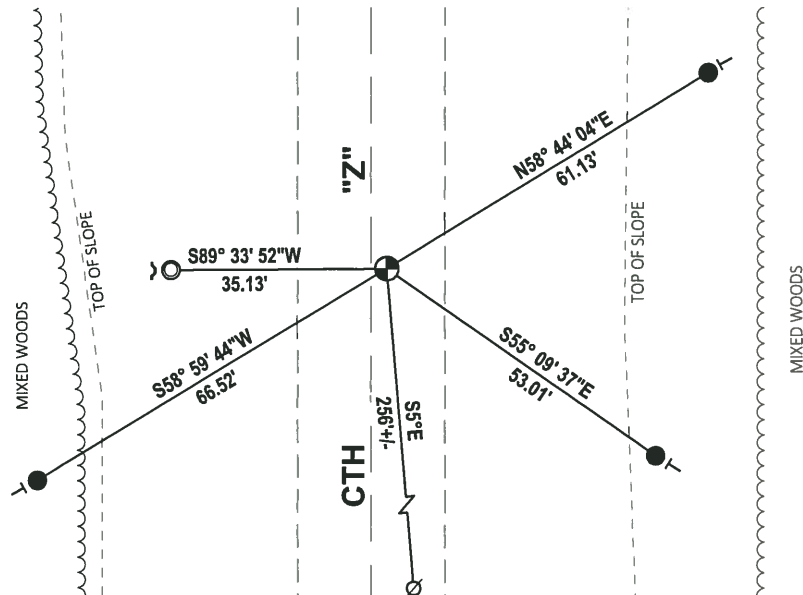
DATE 3/12/19

TIE SKETCH

NOTE: THE CORNER LANDS 3± EAST OF CENTERLINE OF CTH "Z"



- SET 3/4" x 18" IRON REBAR, 1.50#/FT
- FOUND 1-1/4" O.D. IRON PIPE
- ⊕ FOUND HARRISON MONUMENT
- ∅ WITNESS POWER POLE
- ⌒ STEEL FENCE POST
- VINYL "T" POST



ADAMS COUNTY

Survey Monument Record

TYPE OF MONUMENT: Harrison Standard

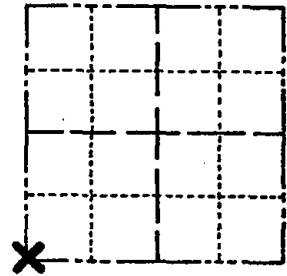
STATE PLANE COORDINATES: N _____
E _____

ELEVATION — M.S.L. DATUM: _____

THETA ANGLE: _____

FIELD BOOK: _____ PAGE _____

CORNER NO. 714 ⁶³
SECTION 17
TOWN 17
RANGE 5



LOCATION
(Indicated by 'X')

SEAL:

BASIS FOR MONUMENT LOCATION

(Use reverse side if necessary)

Show info such as: History of corner, with reference to Vol. and pg, dates, surveyor; exact description of monument replaced; if location computed, by taped or EDM traverse; landowner remarks, etc.

Ran EDM/transit traverse of entire area tying in all the existing evidence in the area. Prorated the corner between existing evidence in the North-South direction and set record distance from the East.

MONUMENT ON NW-SW 9100, 80
ALL OK 5/30/85 OK
OK 1-30-90 KZ-SS
1-GONE 8-24-94 JG-SS
1-GONE, 1-NEW, 1-10-00, JG-SS
ALL OK 2-15-05, JG-DA
OK 12-16-10 SS



CERTIFIED CORRECT:
Dale C. Hagen
Registered Land Surveyor
DATE: 6/3/75

April 11 '84 Ken Carlson

TIE SKETCH

(Show at least four ties)

NOTE: Ties in trees to nail in disc.

