

17
SECTION

17
TOWN

05
RANGE

ADAMS COUNTY

COUNTY CORNER NO: 64

ROMPORTOL ID: 41705170020

PUBLIC LAND SURVEY MONUMENT RECORD

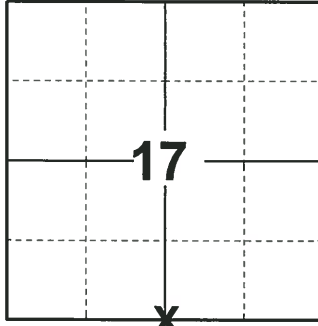
TYPE OF MONUMENT: HARRISON
ADAMS COUNTY COORDINATES, NAD 83 (2007)

N. 207902.302

E. 502113.434

ELEVATION- DATUM

FIELD WORK DATE: 01/03/2019



LOCATION

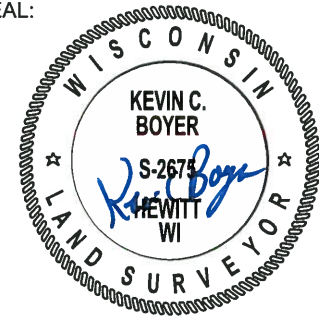
(INDICATE CORNER BY "X")

BASIS FOR MONUMENT LOCATION

1975 PLS 1103 ACCEPTED EXISTING 2" IRON PIPE FOUND DURING EDM/TRANSIT TRAVERSE OF THE ENTIRE AREA. THIS PIPE WAS ALSO USED BY H. SIME IN SURVEY TO THE SOUTH. SET A HARRISON MONUMENT AND TIED OUT CORNER.

2019 - PLS 2675 FOUND A HARRISON MONUMENT FLUSH WITH THE GROUND SURFACE AND 2 WITNESSES. THE MONUMENT AGREES WITH THE EXISTING WITNESSES. ACCEPTED THE HARRISON MONUMENT AS THE CORNER LOCATION. SET 4 NEW TIES AND MEASURED TO THE TIES AND WITNESSES.

SEAL:



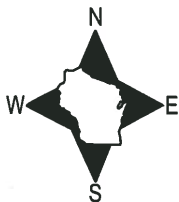
DATA SHOWN HERE ON THIS TIE SHEET IS CORRECT AND COMPLETE TO THE BEST OF MY KNOWLEDGE AND BELIEF.

PROFESSIONAL LAND SURVEYOR

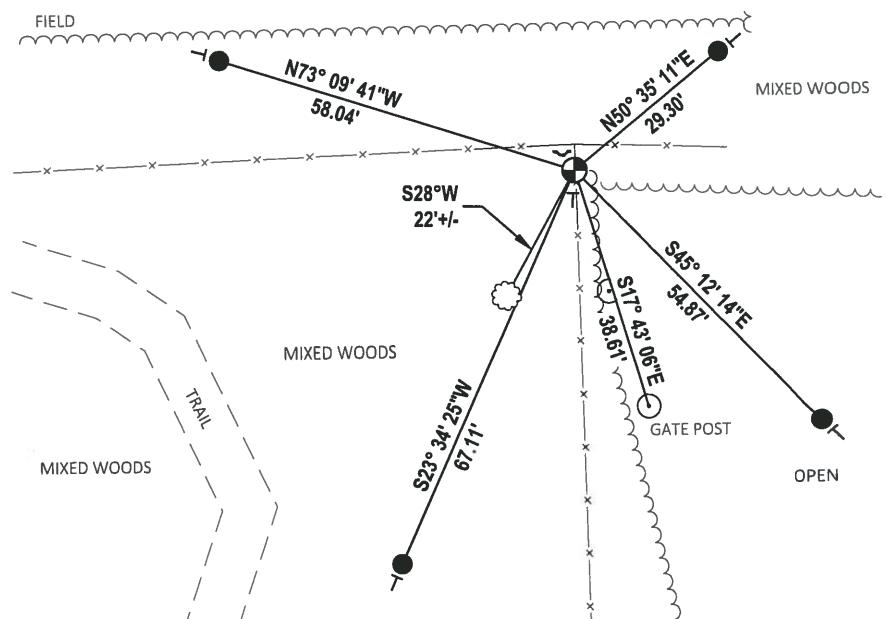
DATE 1-18-19

TIE SKETCH

NOTE: THE CORNER FALLS 4± SOUTH OF THE FENCE CORNER.



- SET 3/4" x 18" IRON REBAR, 1.50#/FT
- ⊕ FOUND HARRISON MONUMENT
- ~ STEEL FENCE POST
- ┌ VINYL "T" POST
- ☼ WITNESS TREE



ADAMS COUNTY

Survey Monument Record

TYPE OF MONUMENT: Harrison Standard

STATE PLANE COORDINATES: N _____

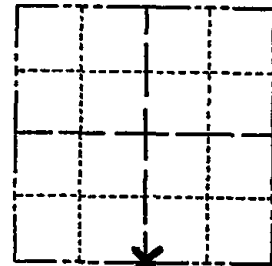
E _____

ELEVATION — M.S.L. DATUM: _____

THETA ANGLE: _____

FIELD BOOK: _____ PAGE _____

CORNER NO. 713 ⁶⁴
 SECTION 17
 TOWN 17
 RANGE 5



LOCATION
(Indicated by 'X')

SEAL:

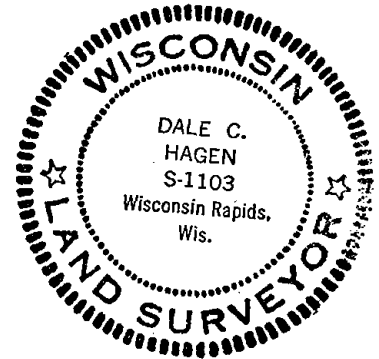
BASIS FOR MONUMENT LOCATION

(Use reverse side if necessary)

Show info such as: History of corner, with reference to Vol. and pg. dates, surveyor; exact description of monument replaced; if location computed, by taped or EDM traverse; landowner remarks, etc.

Accepted existing 2" Iron Pipe found during EDM/transit traverse of the entire area. This Pipe was also used by H. Sime in survey to the South.

- MUN TIES OK 9/29/80 BS-KV
- 1 NEW TIE 10-23-85 MB-SS
- 2 NEW TIES 1-30-90 KZ-SS
- OK 8-24-94 JG-SS
- 1 NEW TIE 1-10-00 JG-SS
- OK 2-15-05 DA/JG
- OK 2-24-10 SS



CERTIFIED CORRECT:

Dale C. Hagen
 Registered Land Surveyor

DATE: 6/3/75

TIE SKETCH

(Show at least four ties)

1/2" IP/ELBOW IMMEDIATELY NORTH OF MAR.

* TAKE SNOOWBLOWER NORTH OF ELM ACRES TRAIL (END OF OAK DRIVE)

NOTE: Ties in trees to nail in disc.

