

16 SECTION 17 TOWN 05 RANGE

ADAMS COUNTY

COUNTY CORNER NO: 67
ROMPORTOL ID: 41705160000

PUBLIC LAND SURVEY MONUMENT RECORD

TYPE OF MONUMENT: HARRISON
ADAMS COUNTY COORDINATES, NAD 83 (2007)

N. 208003.092

E. 509958.128

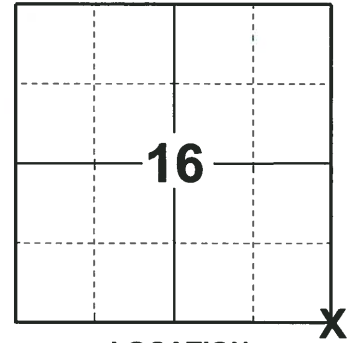
ELEVATION- _____ DATUM _____

FIELD WORK DATE: 01/03/2019

BASIS FOR MONUMENT LOCATION

1980 PLS 1444 THIS CORNER WAS ON LINE AND AT A SINGLE PROPORTIONATE DISTANCE (EQUIDISTANT) FROM THE NORTHEAST CORNER OF SECTION 16 TO THE SOUTHEAST CORNER OF SECTION 21. NO EVIDENCE OF ORIGINAL CORNER OR AN RESURVEY CORNER. DOUBLE PROPORTIONATE METHOD SHOULD HAVE BEEN USED TO SET THIS CORNER BUT WOULD HAVE PUT CORNER APPROX 60' EAST AND WOULD NOT HAVE FIT PHYSICAL EVIDENCE THROUGHOUT THE SECTION. SET A HARRISON MONUMENT AND TIED OUT.

2019 - PLS 2675 FOUND A HARRISON MONUMENT FLUSH WITH THE GROUND SURFACE AND 3 WITNESS TREES. THE MONUMENT AGREES WITH THE EXISTING WITNESS TREES. ACCEPTED THE HARRISON MONUMENT AS THE CORNER LOCATION. SET 4 NEW TIES AND MEASURED TO THE TIES AND WITNESS TREES.



LOCATION

(INDICATE CORNER BY "X")

SEAL:



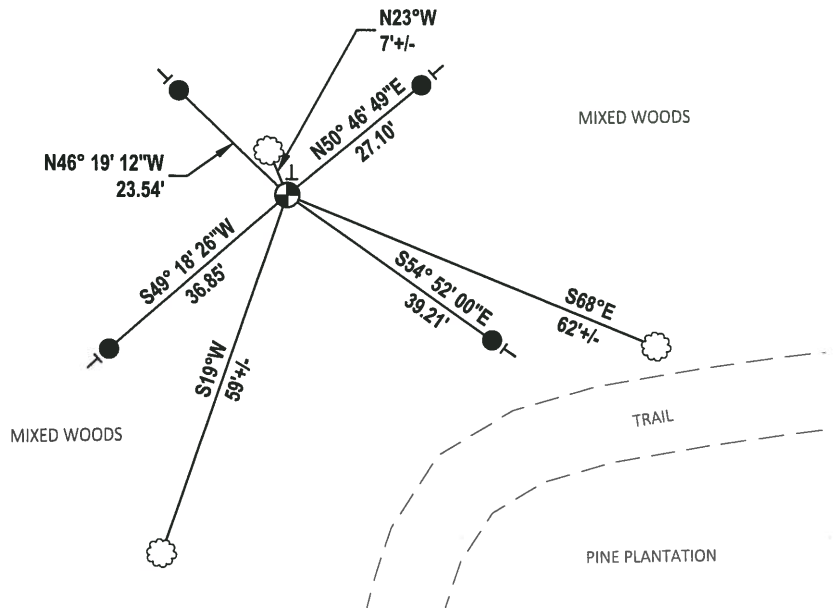
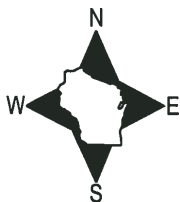
DATA SHOWN HERE ON THIS TIE SHEET IS CORRECT AND COMPLETE TO THE BEST OF MY KNOWLEDGE AND BELIEF.

PROFESSIONAL LAND SURVEYOR

DATE 1-18-19

- TIE SKETCH

NOTE: THE CORNER FALLS 30'± NORTHWEST OF THE TRAIL.

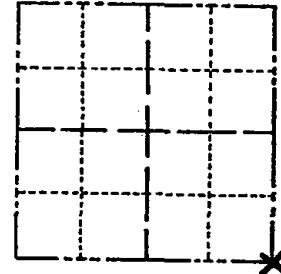


- SET 3/4" x 18" IRON REBAR, 1.50#/FT
- ⊕ FOUND HARRISON MONUMENT
- ┌ VINYL "T" POST
- ⊗ WITNESS TREE

Government Land Corner Certificate

ADAMS County
 TYPE OF MONUMENT: HARRISON
 STATE PLANE COORDINATES: N 43° 56' 14.0"
 HAND HELD GPS 2010 E 089° 53' 51.7"
 ELEVATION — M.S.L. DATUM: _____
 THETA ANGLE: _____
 FIELD BOOK: 77 PAGE 115
 DRAWN BY: LANCE HABECK

CORNER NO. 67
 SECTION 16
 TOWN 17
 RANGE 5



LOCATION
(Indicated by 'X')

BASIS FOR MONUMENT LOCATION

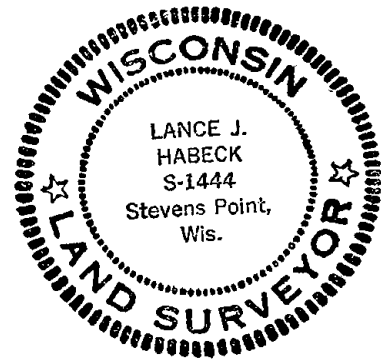
Show info such as: History of corner, with reference to Vol. and pg., dates, surveyor; exact description of monument replaced; if location computed, by taped or EDM traverse; landowner remarks, etc. (Use reverse side if necessary)

This corner was set on line and at a single proportionate distance (equidistant) from the northeast corner of section 16 to the southeast corner of section 21. No evidence of original corner or any resurvey corner.

Double proportionate method should have been used to set this corner but would have put corner approx. 60' east and would not have fit physical evidence throughout the section.

ALL OK 1-29-90 KE-SS
 ALL OK 1-4-95 BS-JG
 ADD 1 TIE 1-6-00 SJS
 ALL OK 2-10-05, SG-SS

SEAL:



DATA SHOWN HERE ON
CERTIFIED CORRECT:

Lance J. Habeck
Registered Land Surveyor

DATE: 11/5/80

TIE SKETCH

Show at least four ties, also fence lines, roads, topo, size and type of witness trees and if off road - best way to arrive at corner.

