

PUBLIC LAND SURVEY MONUMENT RECORD

TYPE OF MONUMENT: HARRISON
 ADAMS COUNTY COORDINATES, NAD 83 (2007)

N. 208093.581

E. 517877.719

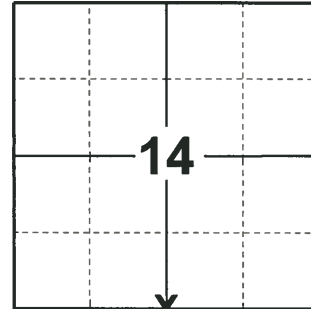
ELEVATION- - - - - DATUM - - - - -

FIELD WORK DATE: 01/07/2019

BASIS FOR MONUMENT LOCATION

1976 - PLS-922 CHECKED ADAMS COUNTY SURVEY RECORDS AND AJ BARRETT MENTIONED USING THIS CORNER IN 1901. NO MENTION WAS MADE OF RESETTING THE CORNER OR WITNESS OBJECTS. FOUND A 3" CEDAR POST WHICH FIT EDM TRAVERSE OF SECTION EXCELLENT. ACCEPTED AS CORNER AND MONUMENTED WITH HARRISON.

2019 - PLS-2675 FOUND HARRISON MONUMENT FLUSH WITH THE GROUND 1 TIE (TIPPED) AND 2 WITNESSES. THE MONUMENT AGREES WITH THE TIE (STRAIGHTENED) AND 2 WITNESSES. ACCEPTED THE HARRISON MONUMENT AS THE CORNER. SET 3 NEW TIES AND MEASURED TO THE EXISTING TIE AND WITNESSES.



LOCATION

(INDICATE CORNER BY "X")

SEAL:



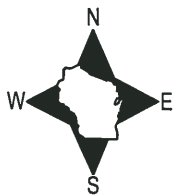
DATA SHOWN HERE ON THIS TIE SHEET IS CORRECT AND COMPLETE TO THE BEST OF MY KNOWLEDGE AND BELIEF.

PROFESSIONAL LAND SURVEYOR

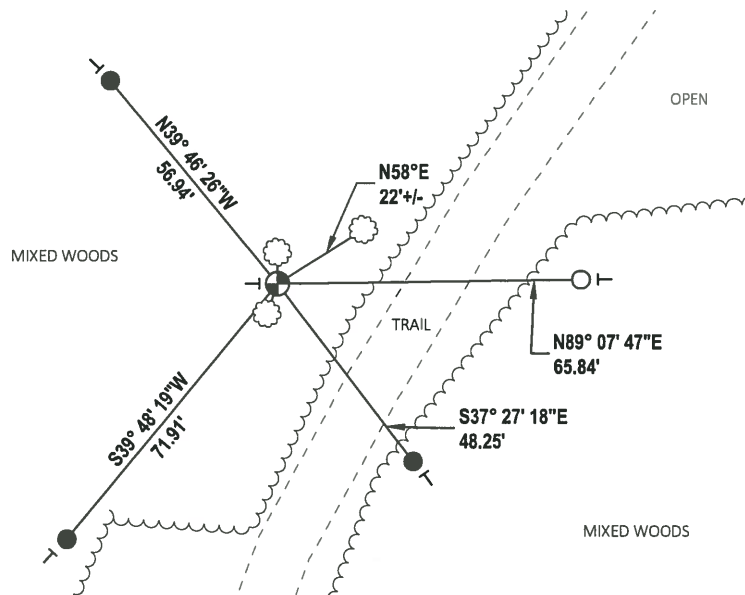
DATE 3/12/19

- TIE SKETCH

NOTE: WITNESS TREE FALLS 7± DUE NORTH OF CORNER. WITNESS TREE FALLS 7± S19°W OF CORNER.



- SET 3/4" x 18" IRON REBAR, 1.50#/FT
- FOUND 3/4" IRON ROD
- ⊕ FOUND HARRISON MONUMENT
- ┊ VINYL "T" POST
- ☉ WITNESS TREE



ADAMS COUNTY

Survey Monument Record

TYPE OF MONUMENT: 30" STANDARD HARRISON

STATE PLANE COORDINATES: N _____

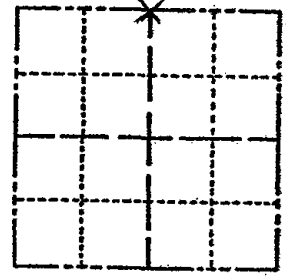
E _____

ELEVATION — M.S.L. DATUM: _____

THETA ANGLE: _____

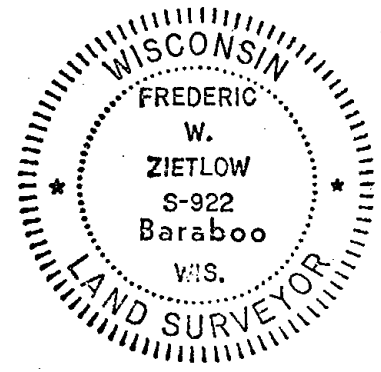
FIELD BOOK: _____ PAGE _____

CORNER NO. 70⁽⁷⁰⁾
 SECTION 23
 TOWN 17N
 RANGE 5E



LOCATION
(Indicated by 'X')

SEAL:



CERTIFIED CORRECT:
Frederic W. Zietlow
 Registered Land Surveyor
 DATE: DECEMBER 30, 1976

BASIS FOR MONUMENT LOCATION

(Use reverse side if necessary)

Show info such as: History of corner, with reference to Vol. and pg. dates, surveyor; exact description of monument replaced; if location computed, by taped or EDM traverse; landowner remarks, etc.

CHECKED ADAMS COUNTY SURVEY RECORDS AND A.J. BARRETT MENTIONED USING THIS CORNER IN 1901. NO MENTION WAS MADE OF RESETTING CORNER OR WITNESS OBJECTS. FOUND A 3" CEDAR POST WHICH FIT EDM TRAVERSE OF SECTION EXCELLENT. ACCEPTED AS CORNER AND MONUMENTED SAME.

- MON. TIES OK RN-SK 1/16/81
- OK 10-20-85 SS
- ALL OK 6-1-90 JG-SS
- 1-NEW-1-GONE 1-6-95 JG-BS
- OK 12-7-99 JG-SS
- OK 2-21-05 DM/JG
- OK 1-03-11 SS

TIE SKETCH

(Show at least four ties)

NOTE: APPROXIMATED DISTANCES

