

PUBLIC LAND SURVEY MONUMENT RECORD

TYPE OF MONUMENT: HARRISON
 ADAMS COUNTY COORDINATES, NAD 83 (2007)

N. 205361.864

E. 509968.292

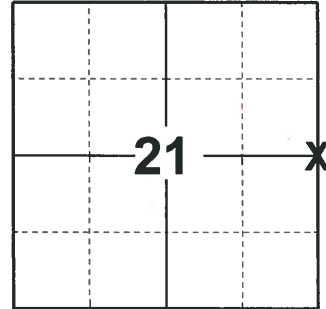
ELEVATION- - - - - DATUM - - - - -

FIELD WORK DATE: 01/08/2019

BASIS FOR MONUMENT LOCATION

1980 - PLS-1444 NO EVIDENCE OF ORIGINAL CORNER OR ANY RESURVEY CORNER. CALCULATED CORNER LOCATION BY EQUIDISTANT AND ON LINE BETWEEN SECTION CORNERS. SET HARRISON MONUMENT AND TIED OUT.

2019 - PLS-2675 FOUND HARRISON MONUMENT 2" BELOW THE GROUND SURFACE AND 3 WITNESS TREES. THE MONUMENT AGREES WITH ALL 3 WITNESS TREES. ACCEPTED THE HARRISON MONUMENT AS THE CORNER LOCATION. SET 4 NEW TIES AND MEASURED TO THE TIES AND WITNESS TREES.



LOCATION

(INDICATE CORNER BY "X")

SEAL:

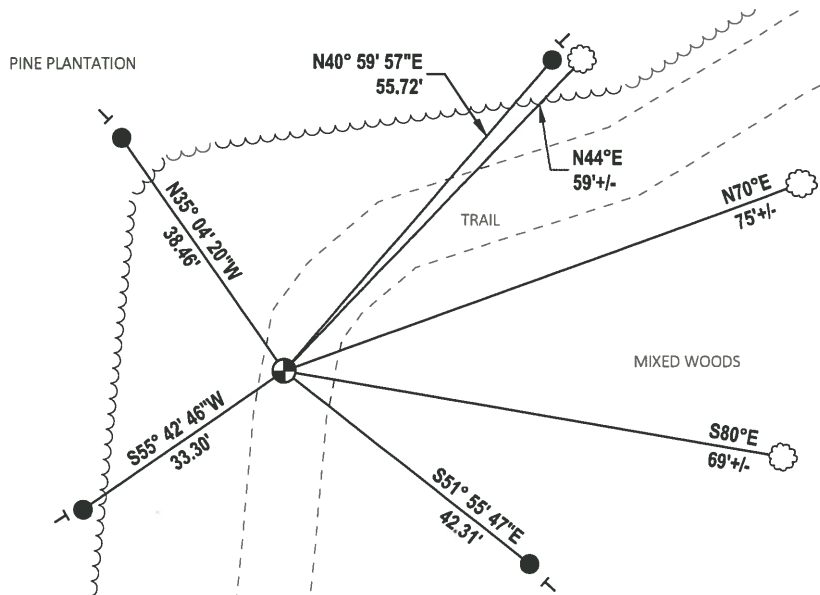
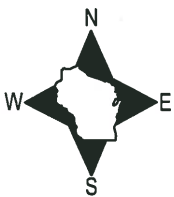


DATA SHOWN HERE ON THIS TIE SHEET IS CORRECT AND COMPLETE TO THE BEST OF MY KNOWLEDGE AND BELIEF.

PROFESSIONAL LAND SURVEYOR

DATE 3/12/19

- TIE SKETCH



- SET 3/4" x 18" IRON REBAR, 1.50#/FT
- ⊕ FOUND HARRISON MONUMENT
- VINYL "T" POST
- ☼ WITNESS TREE

Government Land Corner Certificate

ADAMS County

TYPE OF MONUMENT: HARRISON

STATE PLANE COORDINATES: N 43° 55' 47.9"
 HAND HELD GPS 2010 E 089° 53' 51.5"

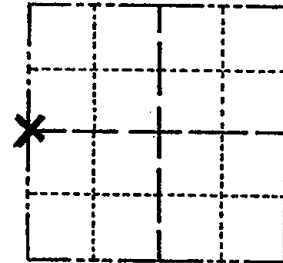
ELEVATION — M.S.L. DATUM: _____

THETA ANGLE: _____

FIELD BOOK: 77 PAGE 117

DRAWN BY: LANCE HABECK

CORNER NO. 77
 SECTION 22
 TOWN 17
 RANGE 5



LOCATION
 (Indicated by 'X')

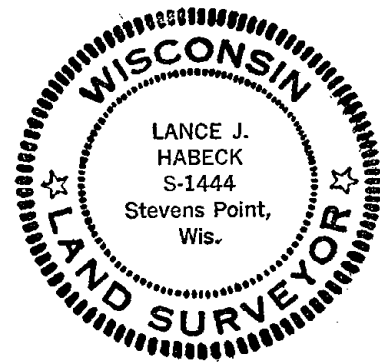
BASIS FOR MONUMENT LOCATION

Show info such as: History of corner, with reference to Vol. and pg., dates, surveyor; exact description of monument replaced; if location computed, by taped or EDM traverse; landowner remarks, etc. (Use reverse side if necessary)

This corner was set equidistant and on line between section corners. No evidence of original corner or any resurvey corner.

9-85 SS - MIB
 OK 1-29-90 KZ-SS
 4-GONE, 3-NEW 1-4-95 BS-JG
 3 TIES REMAIN 1-6-00 SS -
 1-NEW, 2-15-05, JG-DA
 OK 11-17-10 GPR

SEAL:



DATA SHOWN HERE ON
 CERTIFIED CORRECT:

Lance J. Habeck
 Registered Land Surveyor

DATE: 11/5/80

TIE SKETCH

Show at least four ties, also fence lines, roads, topo, size and type of witness trees and if off road - best way to arrive at corner.

