

19 SECTION 17 TOWN 05 RANGE

ADAMS COUNTY

COUNTY CORNER NO: 83
ROMPORTOL ID: 41705190000

PUBLIC LAND SURVEY MONUMENT RECORD

TYPE OF MONUMENT: HARRISON
ADAMS COUNTY COORDINATES, NAD 83 (2007)

N. 202589.588
E. 499438.590

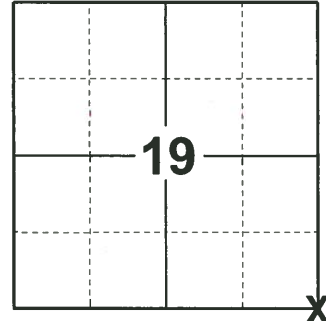
ELEVATION- - - - DATUM - - - -

FIELD WORK DATE: 01/18/2019

BASIS FOR MONUMENT LOCATION

1972 - PLS-981 FOUND CONCRETE MONUMENT, SET 30" HARRISON MONUMENT AND TIED OUT.

2019 - PLS-2675 FOUND HARRISON MONUMENT FLUSH WITH THE GROUND, 2 TIES, 1 WITNESS, AND 2 PROPERTY IRONS. THE MONUMENT AGREES WITH BOTH TIES AND WITNESS. ACCEPTED THE HARRISON MONUMENT AS THE CORNER LOCATION. SET 1 NEW TIE AND MEASURED TO THE TIES, WITNESS, AND PROPERTY IRONS.



LOCATION
(INDICATE CORNER BY "X")

SEAL:



DATA SHOWN HERE ON THIS TIE SHEET IS CORRECT AND COMPLETE TO THE BEST OF MY KNOWLEDGE AND BELIEF.

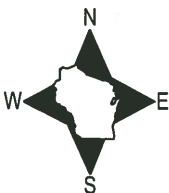
PROFESSIONAL LAND SURVEYOR

DATE 3/12/19

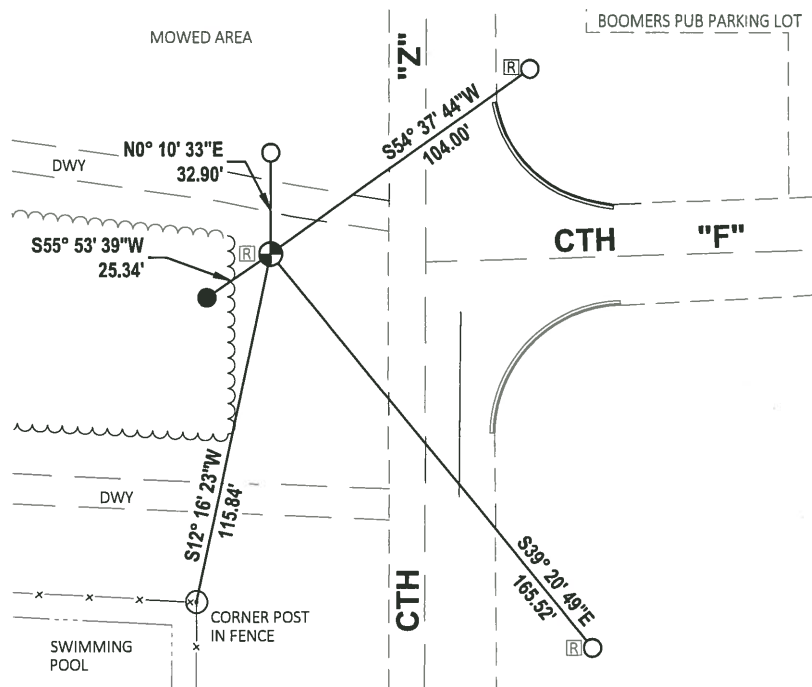
- TIE SKETCH

NOTE: THE CORNER FALLS 51.0'± WEST OF CTH "Z" CENTERLINE

NOTE: 3/4" IRON ROD FOUND 3'± WEST OF CORNER



- SET 3/4" x 18" IRON REBAR, 1.50#/FT
- ⊕ FOUND HARRISON MONUMENT
- ⌒ STEEL FENCE POST
- ⊠ RIGHT-OF-WAY POST



ADAMS COUNTY

Survey Monument Record

TYPE OF MONUMENT: 30" MONUMENT

STATE PLANE COORDINATES: N _____

E _____

ELEVATION — M.S.L. DATUM: _____

THETA ANGLE: _____

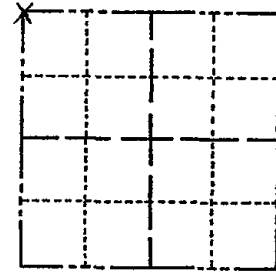
FIELD BOOK: 103 PAGE 127

CORNER NO. 127

SECTION 29

TOWN 17

RANGE 5



LOCATION
(Indicated by 'X')

SEAL:

BASIS FOR MONUMENT LOCATION

(Use reverse side if necessary)

Show info such as: History of corner, with reference to Vol. and pg, dates, surveyor; exact description of monument replaced; if location computed, by taped or EDM traverse; landowner remarks, etc.

Found concrete monument and set 30" Harrison monument on May 11, 1972 by Sam T. Mullen 981

CORNER O.K. 10/28/75 D.M. - C.S.
 COR OK 4/8/80 BS-SJ
 ALL OK 5/28/85 O.K.
 OK 1-30-90 KZ-SS
 1 NEW 8-24-94 JG-SS
 1-NEW, 2-7-00, JG-SS

CERTIFIED CORRECT:

Registered Land Surveyor

DATE: _____

TIE SKETCH 1-Long, 1-New 2-14-05 DA/JG MDN OK - 1 NEW TIE 12-17-10

(Show at least four ties)

To 3/4" Rod 3.87' WEST

