

23
SECTION

17
TOWN

05
RANGE

ADAMS COUNTY

COUNTY CORNER NO: 90

ROMPORTOL ID: 41705230020

PUBLIC LAND SURVEY MONUMENT RECORD

TYPE OF MONUMENT: HARRISON (BROKEN-TOP)
ADAMS COUNTY COORDINATES, NAD 83 (2007)

N. 202834.866

E. 517924.796

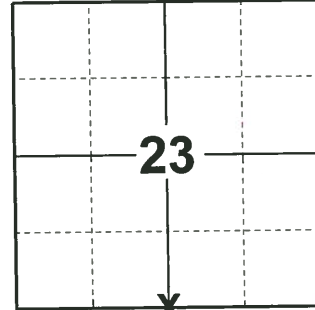
ELEVATION- DATUM

FIELD WORK DATE: 01/17/2019

BASIS FOR MONUMENT LOCATION

1976 - PLS-1103 RAN EDM/T2 TRAVERSE AROUND SECTIONS 25 AND 26, TYING INTO TRAVERSE ACROSS SOUTH SIDE OF THESE SECTIONS BY MIDSTATES, ASSOC. EXCAVATION WITH BACKHOE YIELDED NO EVIDENCE OF THE ORIGINAL CORNER OR ANY REMONUMENTATION. SET CORNER EQUIDISTANT AND ON LINE BETWEEN THE NORTHEAST AND NORTHWEST CORNERS OF SECTION 26.

2019 - PLS-2675 FOUND MAGNAIL 3" BELOW THE ROAD SURFACE, REMOVED, FOUND HARRISON MONUMENT (BROKEN-TOP) 20" BELOW THE ROAD SURFACE, AND 2 WITNESSES. THE MONUMENT AGREES WITH THE 2 WITNESSES. ACCEPTED THE HARRISON MONUMENT (BROKEN-TOP) AS THE CORNER. SET 4 NEW TIES AND MEASURED TO THE EXISTING WITNESSES.



LOCATION

(INDICATE CORNER BY "X")

SEAL:



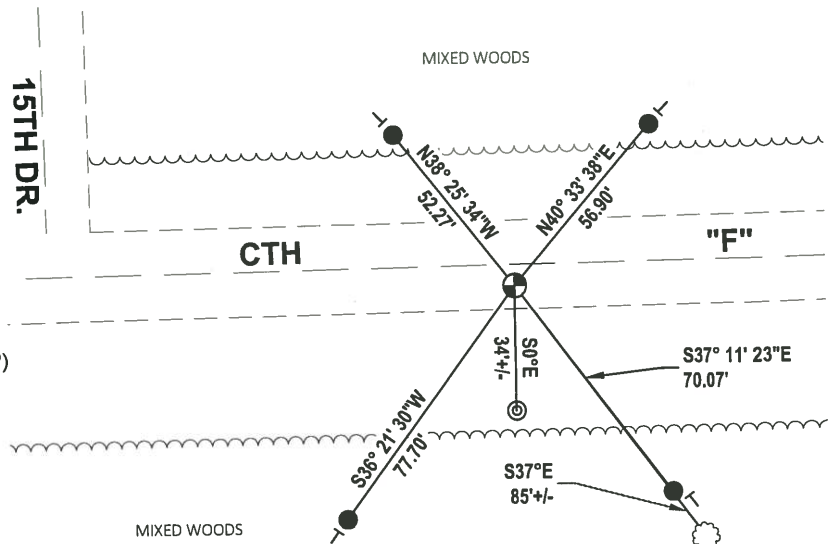
DATA SHOWN HERE ON THIS TIE SHEET IS CORRECT AND COMPLETE TO THE BEST OF MY KNOWLEDGE AND BELIEF.

PROFESSIONAL LAND SURVEYOR

DATE 3/12/19

TIE SKETCH

NOTE: THE CORNER LANDS 6± SOUTH OF CENTERLINE OF CTH "F"



- SET 3/4" x 18" IRON REBAR, 1.50#/FT
- ⊕ FOUND HARRISON MONUMENT (BROKEN-TOP)
- ⊙ 8" ROUND FENCE POST
- ┊ VINYL "T" POST
- ⊗ WITNESS TREE

ADAMS COUNTY

Survey Monument Record

TYPE OF MONUMENT: Harrison

STATE PLANE COORDINATES: N _____
E _____

ELEVATION — M.S.L. DATUM: _____

THETA ANGLE: _____

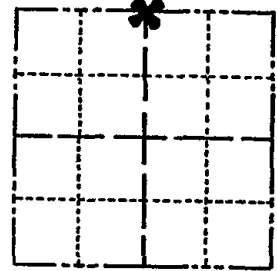
FIELD BOOK: 37 PAGE 40

CORNER NO. 1021

SECTION 26

TOWN 17

RANGE 5



LOCATION
(Indicated by 'X')



BASIS FOR MONUMENT LOCATION

(Use reverse side if necessary)

Show info such as: History of corner, with reference to Vol. and pg, dates, surveyor; exact description of monument replaced; if location computed, by taped or EDM traverse; landowner remarks, etc.

Ran EDM/T2 traverse around Sections 25 and 26, tying into traverse across South side of these sections by Midstates, Assoc.

Excavation with backhoe yielded no evidence of the original corner or any remonumentation.

Set corner equidistant and on line between the Northeast and Northwest corners of Section 26.

Monument set 6-7-76.

1 NEW TIE 11-22-10 GR-SS
TIES + MON OK BS-KV 9/29/80
ALL OK 5/30/85 D.K.
FENCE COR GONE, OTHERS OK 2-5-90 LZ
ALL OK 1-6-95 JG-BS

SEE REVERSE



CERTIFIED CORRECT:

Dale C. Hagen

Registered Land Surveyor

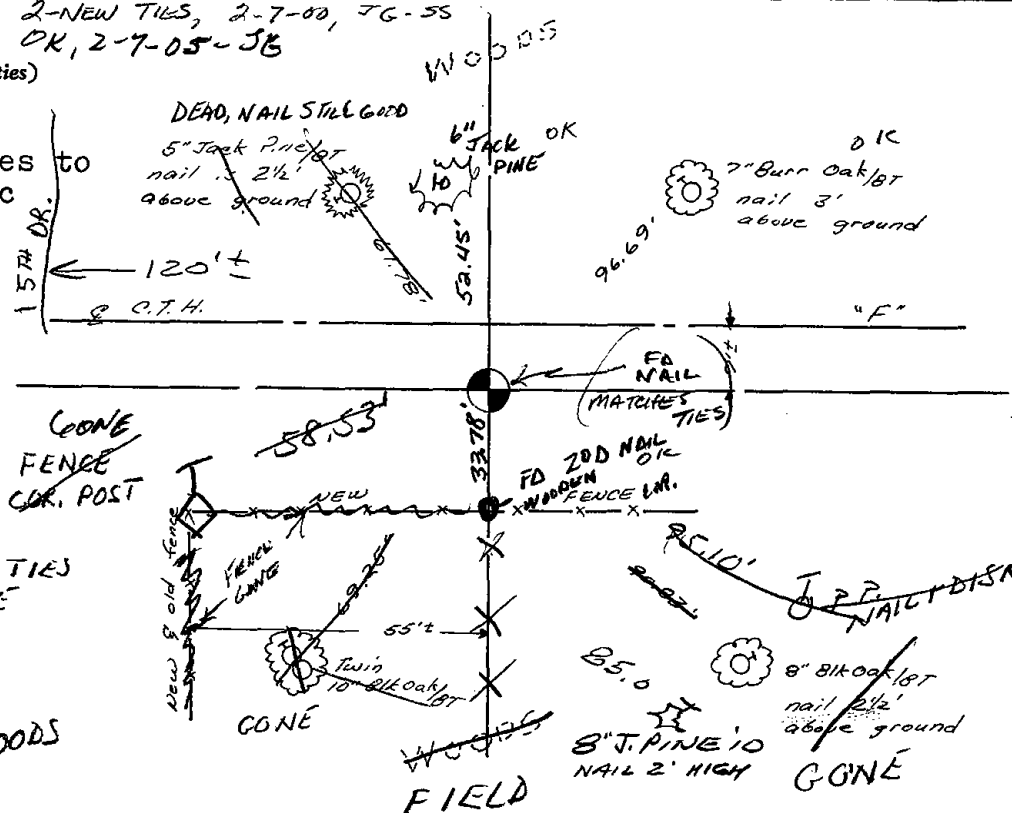
DATE: Sept. 20, 1976

TIE SKETCH 2-NEW TIES, 2-7-00, JG-SS
OK, 2-7-05-JB

(Show at least four ties)

NOTE:

Ties in trees to nail in disc in blaze.



NO OTHER TIES AVAILABLE

WOODS

FIELD

2

11-22-10
1 NEW TIE GR-SS

6" JACK
PINE
OK 2010
52.45

TED 7" BURR OAK
OK 2010

7' S. of E



33.78

85.0

200 NAIL
WOOD FNC
COR OK 2010

2010
8" JACK PINE
NAIL 2' HIGH