

24
SECTION

17
TOWN

05
RANGE

ADAMS COUNTY

COUNTY CORNER NO: 92

ROMPORTOL ID: 41705240020

PUBLIC LAND SURVEY MONUMENT RECORD

TYPE OF MONUMENT: HARRISON (BROKEN-TOP)
ADAMS COUNTY COORDINATES, NAD 83 (2007)

N. 202912.226

E. 523175.286

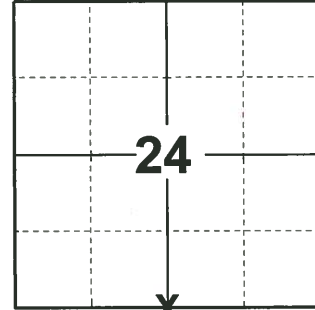
ELEVATION: DATUM

FIELD WORK DATE: 01/17/19

BASIS FOR MONUMENT LOCATION

1976 - PLS-1103 RAN EDM/T2 TRAVERSE AROUND SECTION 25 AND 26, TYING INTO THE TRAVERSE ACROSS THE SOUTH SIDE OF THESE SECTIONS BY MIDSTATES, ASSOC. EXCAVATION WITH BACKHOE YIELDED NO EVIDENCE OF THE ORIGINAL CORNER OR ANY REMONUMENTATION. RELOCATED CORNER EQUIDISTANT AND ON LINE BETWEEN THE NORTHEAST AND NORTHWEST CORNERS OF SECTION 25.

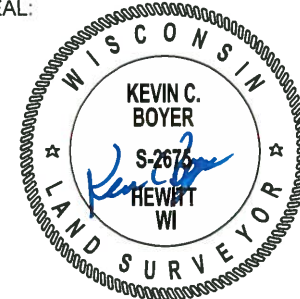
2019 - PLS-2675 FOUND 3/4" REBAR IN ROAD SURFACE, REMOVED, FOUND HARRISON MONUMENT (BROKEN-TOP) 20" BELOW, AND 3 TIES. THE HARRISON AGREES WITH ALL 3 TIES. ACCEPTED THE HARRISON MONUMENT (BROKEN-TOP) AS THE CORNER. SET 1 NEW TIE AND MEASURED TO THE EXISTING TIES.



LOCATION

(INDICATE CORNER BY "X")

SEAL:



DATA SHOWN HERE ON THIS TIE SHEET IS CORRECT AND COMPLETE TO THE BEST OF MY KNOWLEDGE AND BELIEF.

PROFESSIONAL LAND SURVEYOR

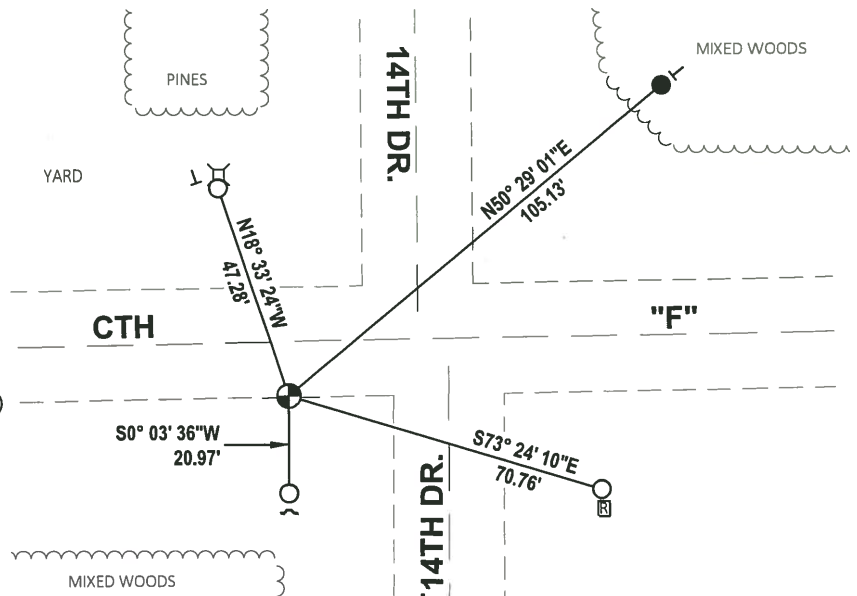
DATE 3/12/19

- TIE SKETCH

NOTE: THE CORNER LANDS 12'± SOUTH OF CENTERLINE OF CTH "F"



- SET 3/4" x 18" IRON REBAR, 1.50#/FT
- FOUND 3/4" IRON ROD
- ⊙ FOUND HARRISON MONUMENT (BROKEN-TOP)
- ⊠ METAL RIGHT-OF-WAY POST
- ~ STEEL FENCE POST
- + VINYL "T" POST
- ⊕ TELEPHONE PEDESTAL

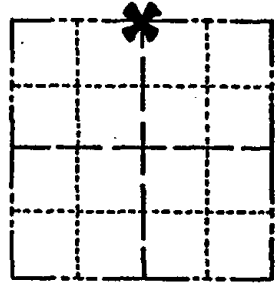


DAMS COUNTY

Survey Monument Record

TYPE OF MONUMENT: Harrison / 1/2" x 11" RE-BAR
 STATE PLANE COORDINATES: N _____
 E _____
 ELEVATION — M.S.L. DATUM: _____
 THETA ANGLE: _____
 FIELD BOOK: 37 PAGE 47

CORNER NO. 1019
 SECTION 25
 TOWN 27
 RANGE 5



LOCATION
(Indicated by 'X')

SEAL:



BASIS FOR MONUMENT LOCATION

(Use reverse side if necessary)

Show info such as: History of corner, with reference to Vol. and pg, dates, surveyor; exact description of monument replaced; if location computed, by taped or EDM traverse; landowner remarks, etc.

Ran EDM/T2 traverse around Section 25 and 26, tying into the traverse across the South side of these sections by Midstates, Assoc.

Excavation with backhoe yielded no evidence of the original corner or any remonumentation.

Relocated corner equidistant and on line between the Northeast and Northwest corners of Section 25.

Corner set 6-8-76.

CERTIFIED CORRECT:

Dale C. Hagen
Registered Land Surveyor

DATE: Sept. 20, 1976

TIES + MON OK BS-KV 9/29/80
 ALL OK 5/30/85 D.K.
 8-17-89 New tie Mark & Ken Carlson
 9-14-01 SET 1/2" X 11" RE-BAR OVER BROKEN HARRISON, JG-CGR

TIE SKETCH 1-GONE, 2-7-05 JG
 OR 2-12-10 SS

(Show at least four ties)

NOTE:

Ties in trees to nail in disc.

