

27 SECTION 17 TOWN 05 RANGE

# ADAMS COUNTY

COUNTY CORNER NO: 98  
ROMPORTOL ID: 41705272000

## PUBLIC LAND SURVEY MONUMENT RECORD

TYPE OF MONUMENT: HARRISON  
ADAMS COUNTY COORDINATES, NAD 83 (2007)

N. 200150.829

E. 515261.482

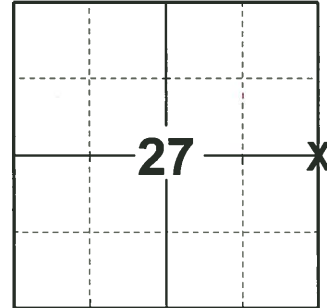
ELEVATION- \_\_\_\_\_ DATUM \_\_\_\_\_

FIELD WORK DATE: 01/08/2019

### BASIS FOR MONUMENT LOCATION

1976 - PLS-1103 RAN EDM/T2 TRAVERSE AROUND SECTIONS 25 AND 26, TYING INTO THE TRAVERSE ACROSS THE SOUTH SIDE OF THESE SECTIONS BY MIDSTATES, ASSOC. INVESTIGATION YIELDED NO EVIDENCE OF THE ORIGINAL CORNER OR ANY REMONUMENTATION. SET CORNER EQUIDISTANT BETWEEN SOUTHWEST AND NORTHWEST CORNERS OF SECTION 26, AND ON ANCIENT FENCE TO THE SOUTH.

2019 - PLS-2675 FOUND HARRISON MONUMENT 2" ABOVE THE WATER LINE AND 3 WITNESS TREES. THE MONUMENT AGREES WITH ALL 3 WITNESS TREES. ACCEPTED THE HARRISON MONUMENT AS THE CORNER. SET 4 NEW TIES AND MEASURED TO THE EXISTING WITNESS TREES.



**LOCATION**  
(INDICATE CORNER BY "X")

SEAL:



DATA SHOWN HERE ON THIS TIE SHEET IS CORRECT AND COMPLETE TO THE BEST OF MY KNOWLEDGE AND BELIEF.

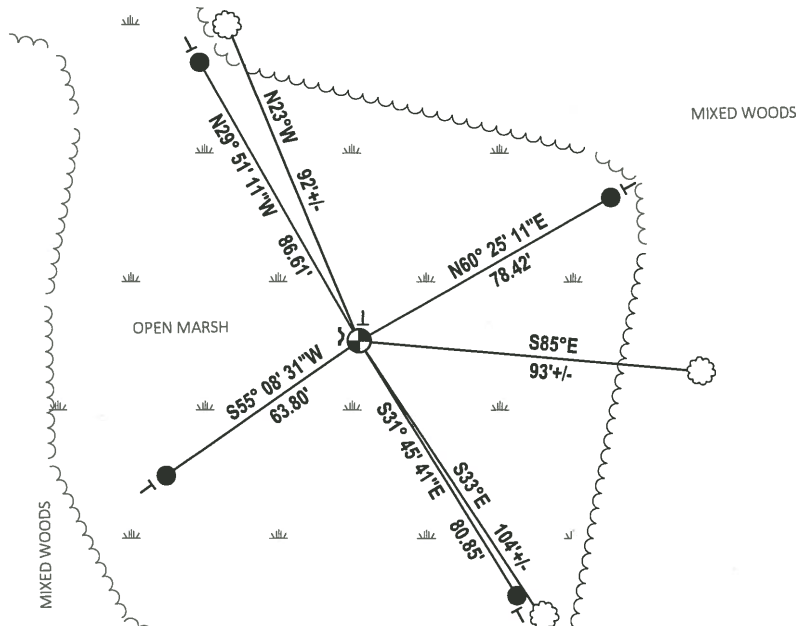
PROFESSIONAL LAND SURVEYOR

DATE 3/12/19

### TIE SKETCH



- SET 3/4" x 18" IRON REBAR, 1.50#/FT
- ⊕ FOUND HARRISON MONUMENT
- ~ STEEL FENCE POST
- VINYL "T" POST
- ☉ WITNESS TREE

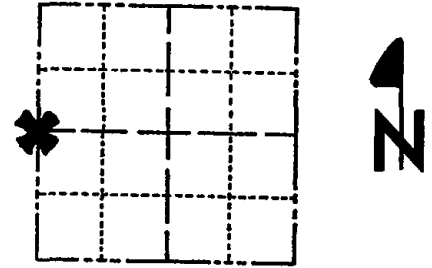


**ADAMS COUNTY**

**Survey Monument Record**

TYPE OF MONUMENT: Harrison  
 STATE PLANE COORDINATES: N 43° 54' 55.6"  
 HAND HELD GPS E 89° 52' 39.3"  
 ELEVATION — M.S.L. DATUM: \_\_\_\_\_  
 THETA ANGLE: \_\_\_\_\_  
 FIELD BOOK: 37 PAGE 40

CORNER NO. 1023  
 SECTION 26  
 TOWN 17  
 RANGE 5



LOCATION  
(Indicated by 'X')

**BASIS FOR MONUMENT LOCATION**

(Use reverse side if necessary)

Show info such as: History of corner, with reference to Vol. and pg, dates, surveyor; exact description of monument replaced; if location computed, by taped or EDM traverse; landowner remarks, etc.

Ran EDM/T2 traverse around Sections 25 and 26, tying into the traverse across the South side of these sections by Midstates, Assoc.

Investigation yielded no evidence of the original corner or any remonumentation.

Set corner equidistant between Southwest and Northwest corners of Section 26, and on ancient fence to the South.

Corner Set 6-7-76.

MON. OK RN-SK 1/20/81  
 " " 10-23-85- S.S.  
 1-GONE, 1-NEW 9-7-90 SG-DC  
 ALL OK 1-13-95 SS-BS  
 " " 1-21-00 STS

SEAL:



CERTIFIED CORRECT:

*Dale C. Hagen*  
 Registered Land Surveyor

DATE: Sept. 20, 1976

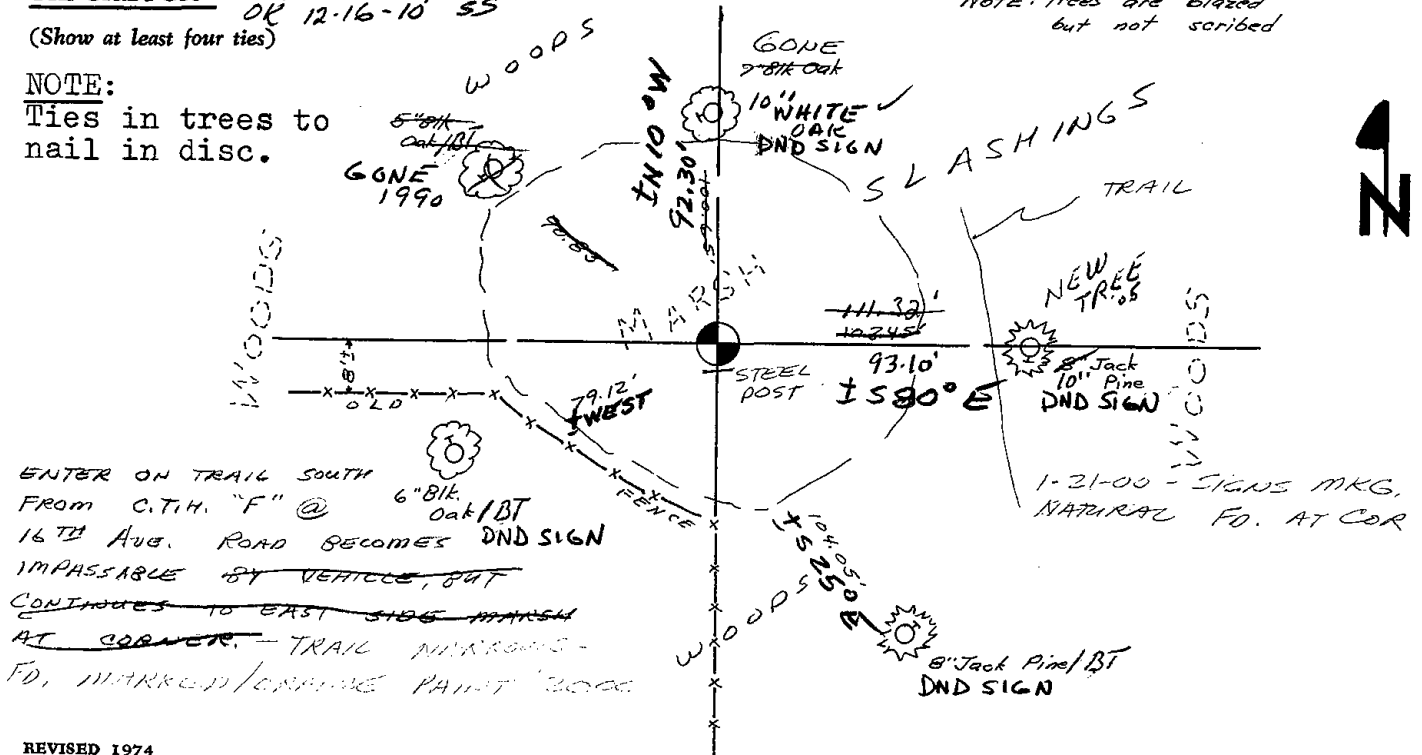
**TIE SKETCH** 1-NEW, 1-GONE OA/56 2-2005  
 OK 12-16-10 SS

(Show at least four ties)

**NOTE:**

Ties in trees to nail in disc.

NOTE: Trees are blazed but not scribed



ENTER ON TRAIL SOUTH FROM C.T.H. "F" @ 16TH AVE. ROAD BECOMES IMPASSABLE BY VEHICLE, BUT CONTINUES TO EAST SIDE MARSH AT CORNER. TRAIL NARROWS - FD. MARKED/CRUISE PAINT 2000