

29 SECTION 17 TOWN 05 RANGE

# ADAMS COUNTY

COUNTY CORNER NO: 104  
 ROMPORTOL ID: 41705290020

## PUBLIC LAND SURVEY MONUMENT RECORD

TYPE OF MONUMENT: HARRISON  
 ADAMS COUNTY COORDINATES, NAD 83 (2007)

N. 197376.484

E. 502037.890

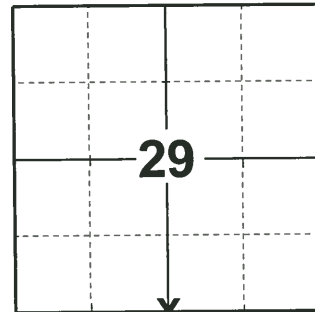
ELEVATION- \_\_\_\_\_ DATUM \_\_\_\_\_

FIELD WORK DATE: 02/21/2019

### BASIS FOR MONUMENT LOCATION

1977 - PLS-606 E.D.M. TRAVERSE. THE N1/4 CORNER WAS SET IN LINE WITH THE WEST LINE OF THE HOLIDAY HEIGHTS SUBDIVISION AT A DISTANCE OF 33 FEET NORTH OF THE 2" IRON PIPE FOUND IN PLACE.

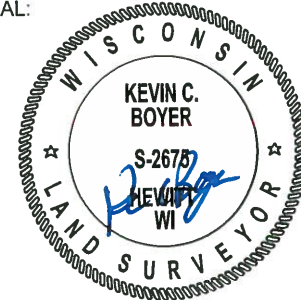
2019 - PLS-2675 FOUND HARRISON MONUMENT 8" BELOW THE ROAD SURFACE, 1 TIE, AND 1 WITNESS. THE MONUMENT AGREES WITH THE TIE AND WITNESS. ACCEPTED THE HARRISON MONUMENT AS THE CORNER. SET 3 NEW TIES AND MEASURED TO THE EXISTING TIE AND WITNESS.



LOCATION

(INDICATE CORNER BY "X")

SEAL:



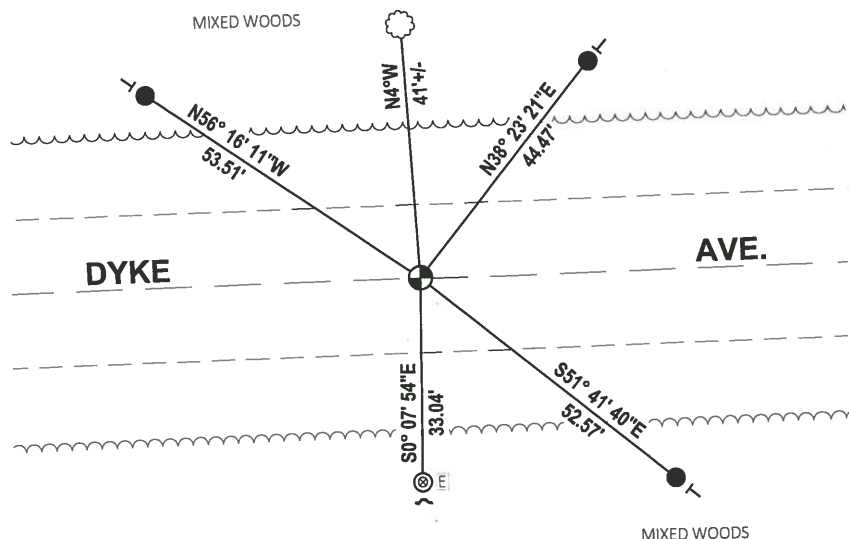
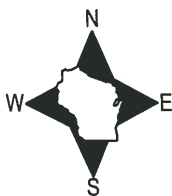
DATA SHOWN HERE ON THIS TIE SHEET IS CORRECT AND COMPLETE TO THE BEST OF MY KNOWLEDGE AND BELIEF.

PROFESSIONAL LAND SURVEYOR

DATE 3/12/19

### TIE SKETCH

NOTE: THE CORNER LANDS 1± NORTH OF CENTERLINE OF DYKE AVE.



- SET 3/4" x 18" IRON REBAR, 1.50#/FT
- ⊗ FOUND 1-1/2" O.D. IRON PIPE
- ⊕ FOUND HARRISON MONUMENT
- ⊞ ELECTRICAL PEDESTAL
- ┘ STEEL FENCE POST
- └ VINYL "T" POST
- ☁ WITNESS TREE

**ADAMS COUNTY**

**Survey Monument Record**

TYPE OF MONUMENT: HARRISON

STATE PLANE COORDINATES: N \_\_\_\_\_

E \_\_\_\_\_

ELEVATION — M.S.L. DATUM: \_\_\_\_\_

THETA ANGLE: \_\_\_\_\_

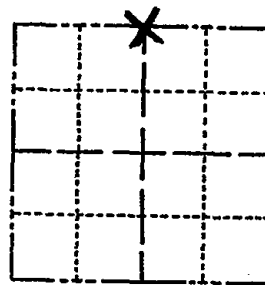
FIELD BOOK: \_\_\_\_\_ PAGE \_\_\_\_\_

CORNER NO. N<sup>1</sup>/<sub>4</sub> Cor.

SECTION Sec. 32

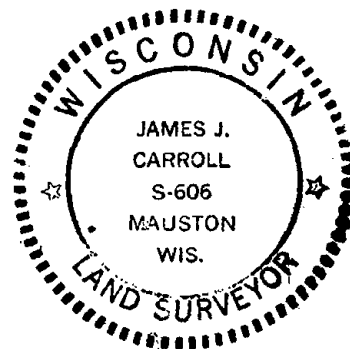
TOWN T17N

RANGE R5E



LOCATION  
(Indicated by 'X')

SEAL:



**BASIS FOR MONUMENT LOCATION**

(Use reverse side if necessary)

Show info such as: History of corner, with reference to Vol. and pg, dates, surveyor; exact description of monument replaced; if location computed, by taped or EDM traverse; landowner remarks, etc.

**E.D.M. Traverse**

The N<sup>1</sup>/<sub>4</sub> corner was set in line with the west line of the Holiday Heights Subdivision at a distance of 33 feet north of the 2" iron pipe found in place.

COR OK 4/8/80 BS-SS  
 ALL OK 5/28/85 DK.  
 ALL OK 1-30-90 KZ-SS  
 ALL OK 8-24-94 JG-SS  
 OK 2-14-00 SS  
 1-GONE 2-14-05 JG/OA  
 2-NEW TNS 2-24-10 SS

CERTIFIED CORRECT:  
*James J. Carroll*  
 Registered Land Surveyor  
 DATE: April 30, 1977

**TIE SKETCH**

(Show at least four ties)

