

28 SECTION 17 TOWN 05 RANGE

ADAMS COUNTY

COUNTY CORNER NO: 106
ROMPORTOL ID: 41705280020

PUBLIC LAND SURVEY MONUMENT RECORD

TYPE OF MONUMENT: HARRISON
ADAMS COUNTY COORDINATES, NAD 83 (2007)

N. 197435.437

E. 507318.468

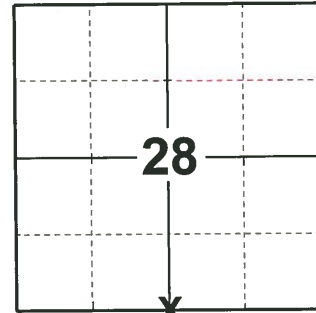
ELEVATION- - - - DATUM - - - -

FIELD WORK DATE: 01/08/2019

BASIS FOR MONUMENT LOCATION

1975 - PLS-1191 CORNER ESTABLISHED WITH DISTANCES AND BEARINGS FROM THE PLAT OF PINEORAMA. FD 1-1/2" PIPE, SET BY ROBERT KLINE. ALL DISTANCES TAPED AND VERIFIED. LOTS SURVEYED BY FIRM PERRY AND CARRINGTON.

2019 - PLS-2675 FOUND HARRISON MONUMENT 18" BELOW THE WATER LINE, 2 TIES, AND 1 WITNESS TREE. ACCEPTED THE HARRISON MONUMENT AS THE CORNER. SET 4 NEW TIES. MEASURED TO THE EXISTING TIES AND WITNESS.



LOCATION

(INDICATE CORNER BY "X")

SEAL:

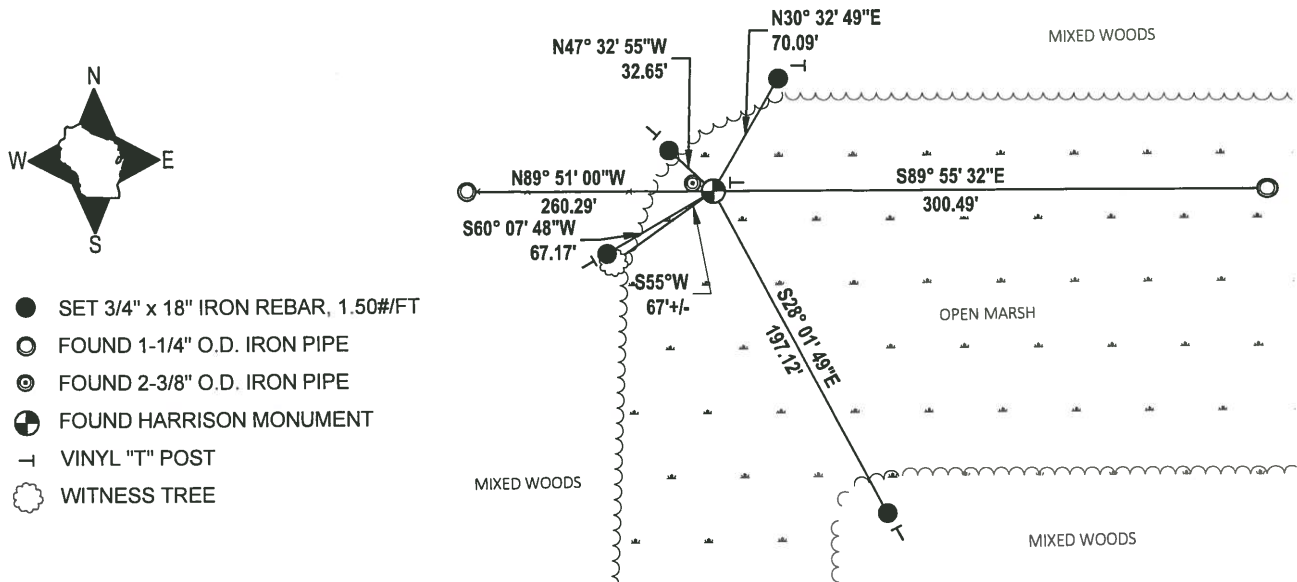


DATA SHOWN HERE ON THIS TIE SHEET IS CORRECT AND COMPLETE TO THE BEST OF MY KNOWLEDGE AND BELIEF.

PROFESSIONAL LAND SURVEYOR

DATE 3/12/19

TIE SKETCH



- SET 3/4" x 18" IRON REBAR, 1.50#/FT
- FOUND 1-1/4" O.D. IRON PIPE
- ⊙ FOUND 2-3/8" O.D. IRON PIPE
- ⊕ FOUND HARRISON MONUMENT
- └ VINYL "T" POST
- ⊗ WITNESS TREE

ADAMS COUNTY

Survey Monument Record *Set Harrison 5-7-75*

TYPE OF MONUMENT: 2" x 30" IRON PIPE

STATE PLANE COORDINATES: N _____

E _____

ELEVATION — M.S.L. DATUM: _____

THETA ANGLE: _____

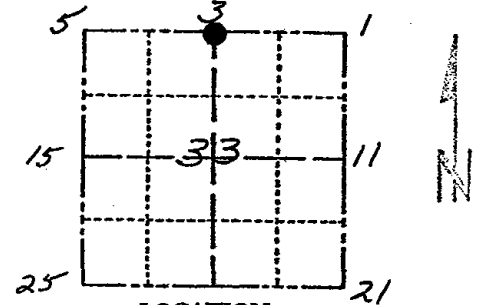
FIELD BOOK: 454 PAGE 71

CORNER NO. 607

SECTION 33

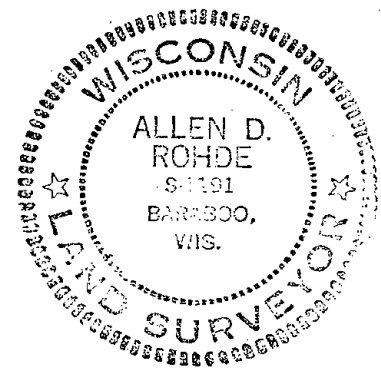
TOWN 17 N

RANGE 5 E



LOCATION
(Indicated by 'X')

SEAL:



BASIS FOR MONUMENT LOCATION

(Use reverse side if necessary)

Show info such as: History of corner, with reference to Vol. and pg, dates, surveyor; exact description of monument replaced; if location computed, by taped or EDM traverse; landowner remarks, etc.

Corner Established with Distances & Brg's From the PLAT of PINEORAMA. Fd 1 1/2" PIPE, Set by Robert Kline. All distances taped & Verified. Lots Surveyed by Firm PERRY & CARRINGTON

OK 11-27-00 JG-SS

OK 6-23-05, JG-SS

OK NOV 2010 GR

Harrison in swamp mark - loose but ties are good - set 9' pipe - pole by Harrison - 10/20/75 D.M.-S.S.

COR OK 4/8/80 BS-SS

ALL OK 5/29/85 DK

OK 2-5-90 KE

OK 1-11-95 JG-SS

CERTIFIED CORRECT:

Allen Rohde

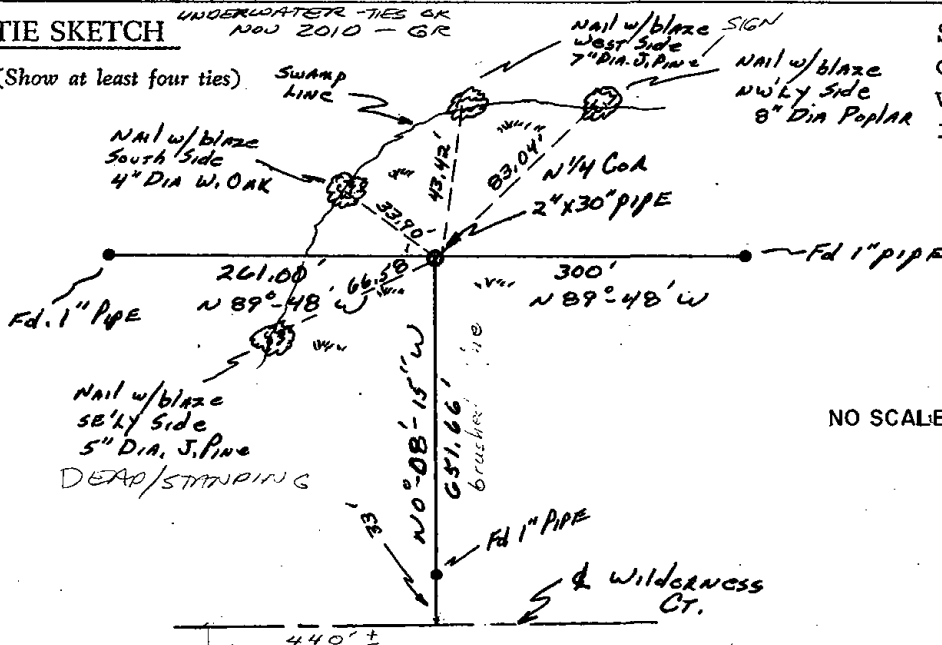
Registered Land Surveyor

DATE: 1-6-75

TIE SKETCH

UNDERWATER TIES OK NOV 2010 - GR

(Show at least four ties)



SURVEYOR'S NOTE: This corner will be monumented with a Harrison Marker in the Spring of 1975.

NO SCALE

