

27 SECTION 17 TOWN 05 RANGE

ADAMS COUNTY

COUNTY CORNER NO: 108
ROMPORTOL ID: 41705270020

PUBLIC LAND SURVEY MONUMENT RECORD

TYPE OF MONUMENT: 1-1/4" O.D. IRON PIPE W/CAP
ADAMS COUNTY COORDINATES, NAD 83 (2007)

N. 197475.939

E. 512599.841

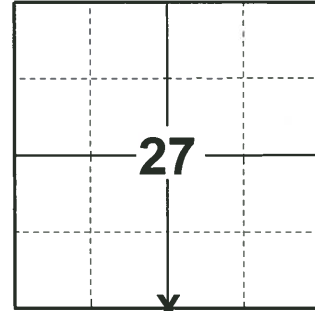
ELEVATION- - - - - DATUM - - - - -

FIELD WORK DATE: 01/09/2019

BASIS FOR MONUMENT LOCATION

1981 - PLS-1444 THIS CORNER WAS SET EQUIDISTANT AND ON LINE BETWEEN SECTION CORNERS. NO EVIDENCE OF THE ORIGINAL CORNER OR ANY RESURVEY CORNER WAS FOUND.

2019 - PLS-2675 FOUND 1-1/4" O.D. IRON PIPE FLUSH WITH THE GROUND AND 4 WITNESS TREES. THE MONUMENT AGREES WITH ALL 4 WITNESS TREES. ACCEPTED THE 1-1/4" O.D. IRON PIPE AS THE CORNER. SET 4 NEW TIES AND MEASURED TO THE EXISTING WITNESS TREES.



LOCATION

(INDICATE CORNER BY "X")

SEAL:



DATA SHOWN HERE ON THIS TIE SHEET IS CORRECT AND COMPLETE TO THE BEST OF MY KNOWLEDGE AND BELIEF.

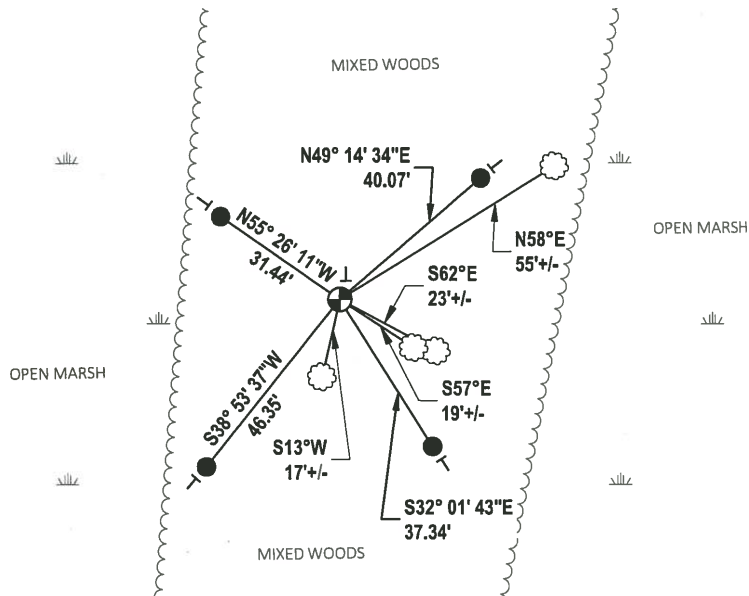
PROFESSIONAL LAND SURVEYOR

DATE 3/12/19

TIE SKETCH



- SET 3/4" x 18" IRON REBAR, 1.50#/FT
- ⊕ FOUND 1-1/4" O.D. IRON PIPE W/CAP
- VINYL "T" POST
- ⊙ WITNESS TREE



Government Land Corner Certificate

ADAMS County

CORNER NO. 108

SECTION 34

TOWN 17

RANGE 5

TYPE OF MONUMENT: HARRISON

TEMP 1X24 1/2" P

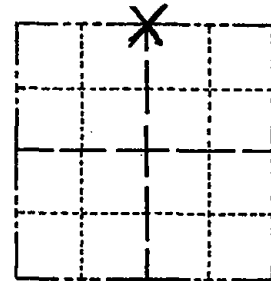
STATE PLANE COORDINATES: N 43°54'30.0"
 HAND HELD GPS E 89°53'15.7"

ELEVATION — M.S.L. DATUM: _____

THETA ANGLE: _____

FIELD BOOK: 87 PAGE 127

DRAWN BY: R. NUBER



LOCATION
(Indicated by 'X')

BASIS FOR MONUMENT LOCATION

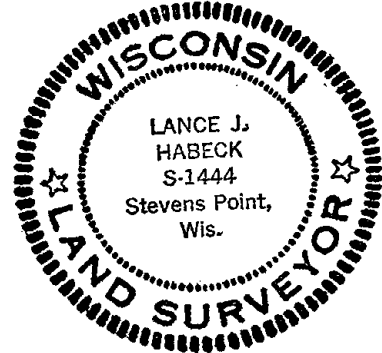
Show info such as: History of corner, with reference to Vol. and pg., dates, surveyor; exact description of monument replaced; if location computed, by taped or EDM traverse; landowner remarks, etc. (Use reverse side if necessary)

This corner was set equidistant and on line between section corners. No evidence of the original corner or any resurvey corner was found.

2-5-90 1" IP/PLUG SIGN ON 4" BIRCH 1'± N
 1 NEW TIE SW OF PIPE FACES SO. - SS
 ALL OK 6/6/95 JG
 FOUND 1" IP - 3 NEW TIES 12-15-10 SS

COMING FROM N.E. CORNER SEC. 34 - AFTER CROSSING CREEK, WALK WOODS TRAIL ON OAK RIDGE WESTERLY - ROAD WILL BEAR MORE N.W. AT A POINT WHERE ROAD CUTS OVER TO ANOTHER OAK RIDGE - FROM THIS POINT GO 400'± WEST TO BE NORTH OF CORNER, THEN SOUTH 750'±

SEAL:



DATA SHOWN HERE ON CERTIFIED CORRECT:

Lance J. Habeck
 Registered Land Surveyor

DATE: 2/4/81

TIE SKETCH

Show at least four ties, also fence lines, roads, topo, size and type of witness trees' and if off road - best way to arrive at corner.

CORNER 750'± SOUTH OF TOP OF OAK RIDGE - ROUGH CHAINED WILL CROSS MARSHES -

