

27 SECTION 17 TOWN 05 RANGE

ADAMS COUNTY

COUNTY CORNER NO: 109
ROMPORTOL ID: 41705270000

PUBLIC LAND SURVEY MONUMENT RECORD

TYPE OF MONUMENT: HARRISON
ADAMS COUNTY COORDINATES, NAD 83 (2007)

N. 197520.573

E. 515221.590

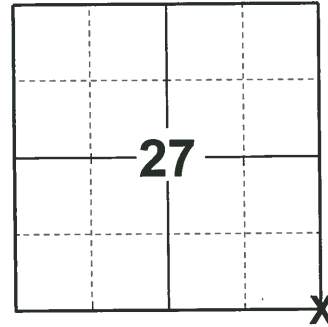
ELEVATION- - - - DATUM - - - -

FIELD WORK DATE: 01/09/2019

BASIS FOR MONUMENT LOCATION

1976 - PLS-922 CHECKED COUNTY SURVEY RECORDS FOR RESURVEYS AND NONE WERE ON FILE. ACCEPTED OLD FENCE CORNER AFTER EVALUATING COMPLETE E.D.M. TRAVERSE OF SECTION 35.

2019 - PLS-2675 FOUND HARRISON MONUMENT 4" ABOVE THE GROUND AND DID NOT RECOVER ANY WITNESS OR TIES. ACCEPTED THE HARRISON MONUMENT AS THE CORNER. SET 4 NEW TIES.



LOCATION
(INDICATE CORNER BY "X")

SEAL:



DATA SHOWN HERE ON THIS TIE SHEET IS CORRECT AND COMPLETE TO THE BEST OF MY KNOWLEDGE AND BELIEF.

PROFESSIONAL LAND SURVEYOR

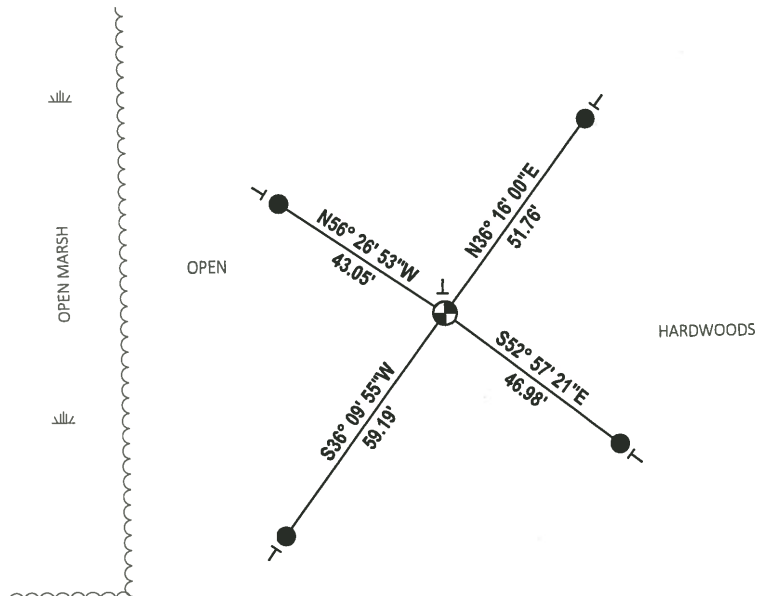
DATE 3/12/19

- TIE SKETCH

NOTE: THE CORNER LAND 200± EAST OF THE OPEN MARSH



- SET 3/4" x 18" IRON REBAR, 1.50#/FT
- ⊕ FOUND HARRISON MONUMENT
- VINYL "T" POST

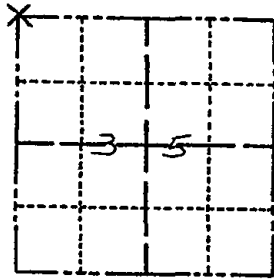


ADAMS COUNTY

Survey Monument Record

TYPE OF MONUMENT: 30" HARRISON MON.
STATE PLANE COORDINATES: N 43° 54' 30.4"
E 89° 52' 40"
ELEVATION - M.S.L. DATUM:
THETA ANGLE:
FIELD BOOK: PAGE

CORNER NO. 873
SECTION 35
TOWN 17N
RANGE 5E



BASIS FOR MONUMENT LOCATION

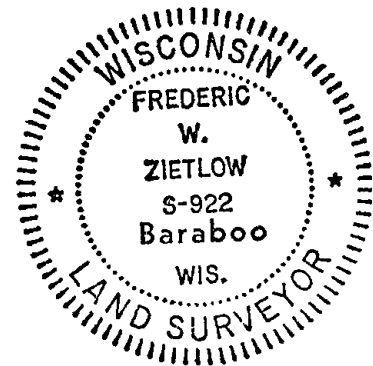
(Use reverse side if necessary)

Show info such as: History of corner, with reference to Vol. and pg. dates, surveyor; exact description of monument replaced; if location computed, by taped or EDM traverse; landowner remarks, etc.

CHECKED COUNTY SURVEY RECORDS FOR RESURVEYS & NONE WERE ON FILE. ACCEPTED OLD FENCE CORNER AFTER EVALUATING COMPLETE EDM TRAVERSE OF SECTION 35.

MON. & TIES OK 1/15/81 RN-SK
10-28-85 MB-SS
OK REBLAZE TRACES 2-5-90 SS
ALL OK 6/6/95 JG
OK - 11-30-10 GR

LOCATION (Indicated by 'X')
SEAL:



CERTIFIED CORRECT:
Frederic W. Zietlow
Registered Land Surveyor
DATE: FEBRUARY 25, 1976

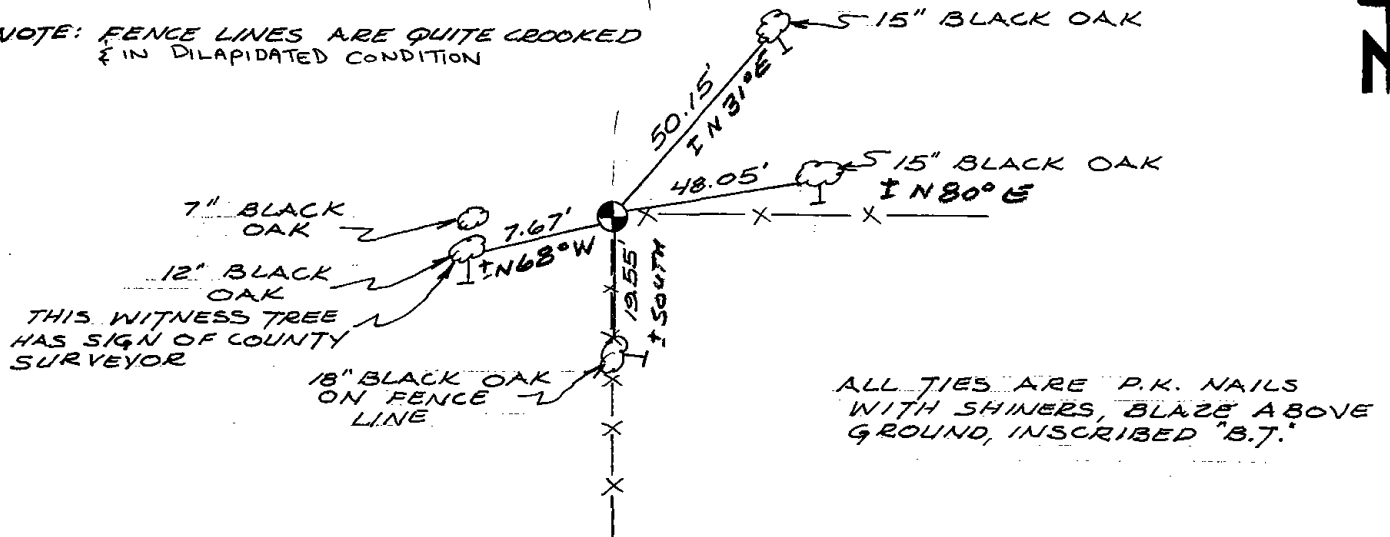
* 5' TALL
NORWAY 1990

TIE SKETCH

(Show at least four ties)

200'± South (PINE PLANTINGS - few rows top EAST OF SECTION LINE FROM TOP OF RIDGE HEAD SOUTH AT WEST END)

NOTE: FENCE LINES ARE QUITE CROOKED & IN DILAPIDATED CONDITION



ALL TIES ARE P.K. NAILS WITH SHINERS, BLAZE ABOVE GROUND, INSCRIBED "B.T."