

26 SECTION 17 TOWN 05 RANGE

ADAMS COUNTY

COUNTY CORNER NO: 111
ROMPORTOL ID: 41705260000

PUBLIC LAND SURVEY MONUMENT RECORD

TYPE OF MONUMENT: HARRISON (BROKEN-TOP)
ADAMS COUNTY COORDINATES, NAD 83 (2007)

N. 197581.241

E. 520538.014

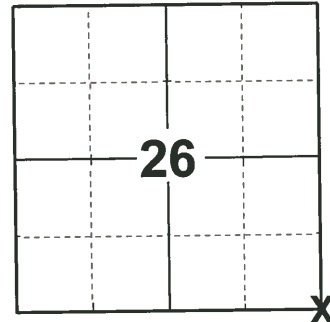
ELEVATION- - - - DATUM - - - -

FIELD WORK DATE: 01/10/2019

BASIS FOR MONUMENT LOCATION

1976 - PLS-922 CHECKED COUNTY SURVEY RECORDS FOR RESURVEYS AND NONE WERE ON FILE. ACCEPTED OLD WELL ESTABLISHED FENCE CORNER, AFTER EVALUATING E.D.M TRAVERSE OF SECTIONS 35 AND 36.

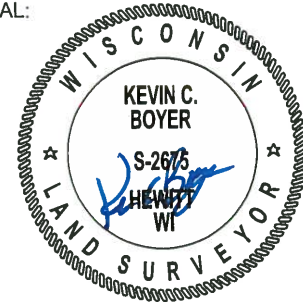
2019 - PLS-2675 FOUND HARRISON MONUMENT (BROKEN-TOP) 4" BELOW THE GROUND AND DID NOT RECOVER ANY TIES OR WITNESS. ACCEPTED THE HARRISON MONUMENT (BROKEN-TOP) AS THE CORNER AND SET 4 NEW TIES.



LOCATION

(INDICATE CORNER BY "X")

SEAL:



DATA SHOWN HERE ON THIS TIE SHEET IS CORRECT AND COMPLETE TO THE BEST OF MY KNOWLEDGE AND BELIEF.

PROFESSIONAL LAND SURVEYOR

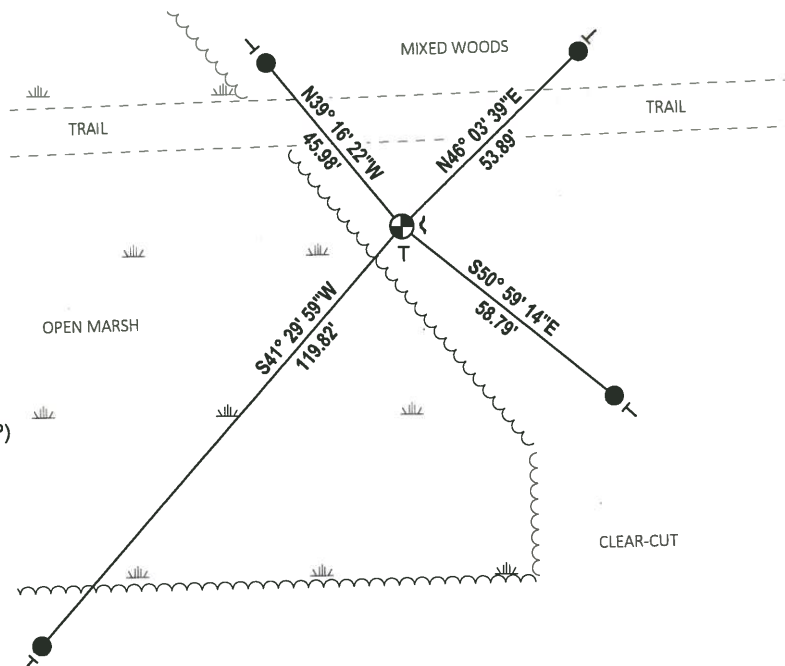
DATE 3/12/19

TIE SKETCH

NOTE: THE CORNER LANDS 23'± SOUTH OF TRAIL



- SET 3/4" x 18" IRON REBAR, 1.50#/FT
- ⊕ FOUND HARRISON MONUMENT (BROKEN-TOP)
- ~ STEEL FENCE POST
- VINYL "T" POST

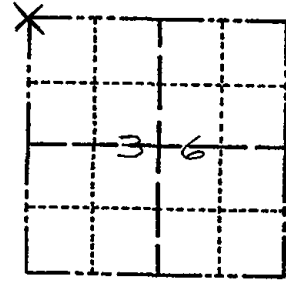


ADAMS COUNTY

Survey Monument Record

TYPE OF MONUMENT: 30" HARRISON MON.
 STATE PLANE COORDINATES: N 43° 54' 31.2"
 HAND HELD GPS E 89° 51' 27.2"
 ELEVATION — M.S.L. DATUM: _____
 THETA ANGLE: _____
 FIELD BOOK: _____ PAGE _____

CORNER NO. 879
 SECTION 36
 TOWN 17N
 RANGE 5E



LOCATION
(Indicated by 'X')

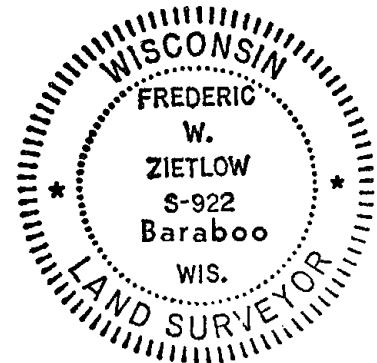
BASIS FOR MONUMENT LOCATION

(Use reverse side if necessary)

Show info such as: History of corner, with reference to Vol. and pg, dates, surveyor; exact description of monument replaced; if location computed, by taped or EDM traverse; landowner remarks, etc.

CHECKED COUNTY SURVEY RECORDS FOR RESURVEYS & NONE WERE ON FILE ACCEPTED OLD WELL ESTABLISHED FENCE CORNER, AFTER EVALUATING E.D.M. TRAVERSE OF SECTIONS 35 & 36 MON. OK - RETIED 1/15/81 RN-SK
 " " 10-28-85 MB-SS
 2 NEW TIES 2-5-90 JS
 ALL OK 1-10-95 JG-RS
 OK 11-30-10 GR

SEAL:



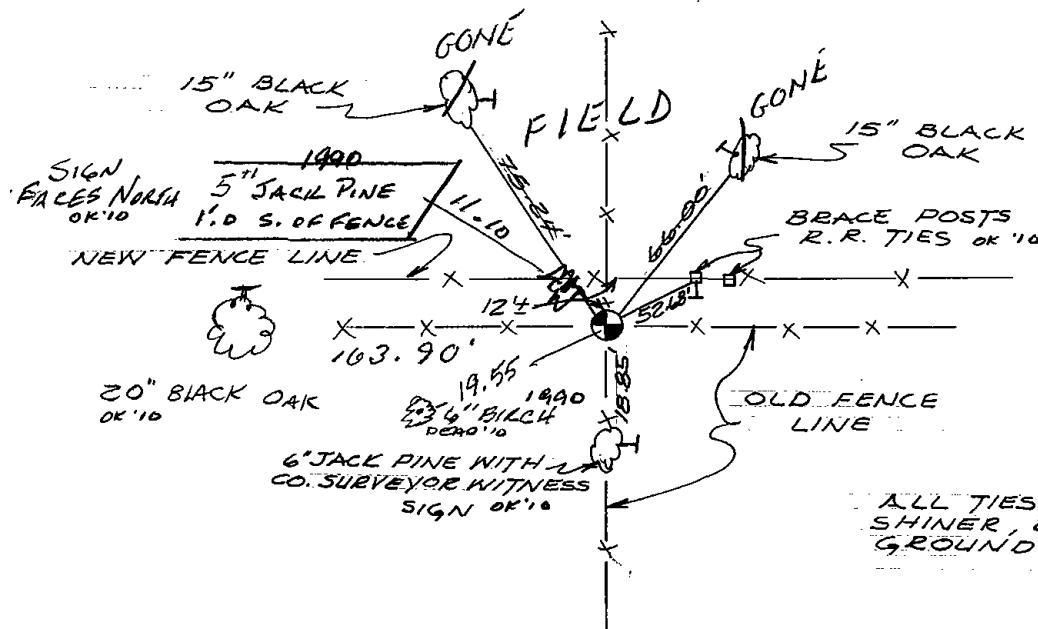
CERTIFIED CORRECT:

Frederic W. Zietlow
 Registered Land Surveyor

DATE: FEBRUARY 25, 1976

TIE SKETCH

(Show at least four ties)



ALL TIES P.K. NAIL WITH SHINER, BLAZE 5" ABOVE GROUND INSCRIBED "B.T."