

25 SECTION 17 TOWN 05 RANGE

ADAMS COUNTY

COUNTY CORNER NO: 112
 ROMPORTOL ID: 41705250020

PUBLIC LAND SURVEY MONUMENT RECORD

TYPE OF MONUMENT: HARRISON (BROKEN-TOP)
 ADAMS COUNTY COORDINATES, NAD 83 (2007)

N. 197607.861
 E. 523169.230

ELEVATION: _____ DATUM: _____

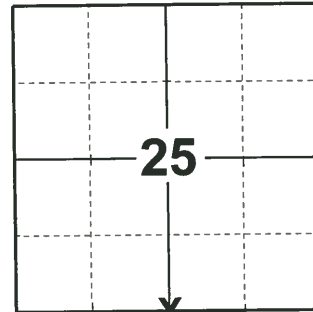
FIELD WORK DATE: 01/28/2019

BASIS FOR MONUMENT LOCATION

1976 - PLS-922 CHECKED COUNTY SURVEY RECORDS FOR RESURVEYS AND NONE WERE ON FILE. THIS CORNER WAS SET EQUIDISTANT AND ON LINE BETWEEN THE NORTHEAST CORNER AND NORTHWEST CORNER. (SINGLE PROPORTION) FIT E.D.M. TRAVERSE OF SECTION GOOD.

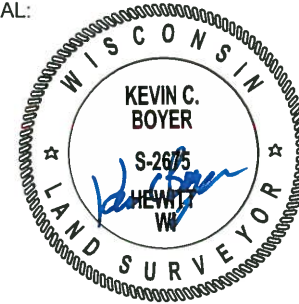
1982 - PLS-878 THIS IS A RE-TIE. HARRISON IS IN DANGER OF BEING DISTURBED.

2019 - PLS-2675 FOUND HARRISON MONUMENT (BROKEN-TOP) 4" BELOW THE GROUND SURFACE AND 1 TIE. THE MONUMENT AGREES WITH THE EXISTING TIE. ACCEPTED THE HARRISON MONUMENT (BROKEN-TOP) AS THE CORNER. SET 4 NEW TIES AND MEASURED TO THE EXISTING TIE.



LOCATION
 (INDICATE CORNER BY "X")

SEAL:



DATA SHOWN HERE ON THIS TIE SHEET IS CORRECT AND COMPLETE TO THE BEST OF MY KNOWLEDGE AND BELIEF.

PROFESSIONAL LAND SURVEYOR

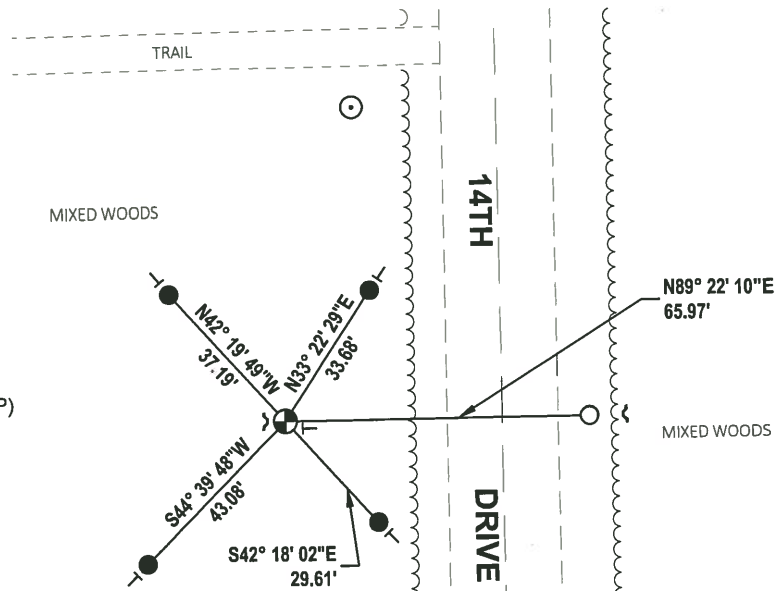
DATE 3/12/19

- TIE SKETCH

NOTE: THE CORNER LANDS 47'± WEST OF CENTERLINE OF 14TH AVE



- SET 3/4" x 18" IRON REBAR, 1.50#/FT
- FOUND 3/4" IRON ROD
- ⊙ FOUND HARRISON MONUMENT (BROKEN-TOP)
- ⊙ 6" WOODEN POST W/DND SIGN
- ↘ STEEL FENCE POST
- VINYL "T" POST



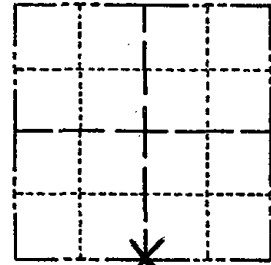
No change

Government Land Corner Certificate

ADAMS County

CORNER NO. 112
SECTION 25
TOWN 17
RANGE 5

TYPE OF MONUMENT: _____
STATE PLANE COORDINATES: N _____
E _____
ELEVATION — M.S.L. DATUM: _____
THETA ANGLE: _____
FIELD BOOK: 77 PAGE 118
DRAWN BY: S.J.H.



LOCATION
(Indicated by 'X')

BASIS FOR MONUMENT LOCATION

Show info such as: History of corner, with reference to Vol. and pg., dates, surveyor; exact description of monument replaced; if location computed, by taped or EDM traverse; landowner remarks, etc. (Use reverse side if necessary)

*this is a RE-TIE-HARRISON
in danger of being destroyed*
Ties & mon OK 5/30/85
OK 2-5-90 KZ
1-NEW, 1-10-95 JG-BS
TIES OK TOP BROKEN OFF, 4-17-00-JG
OK, 2-7-05-JG
OK 11-30-10 GR-SS

SEAL:

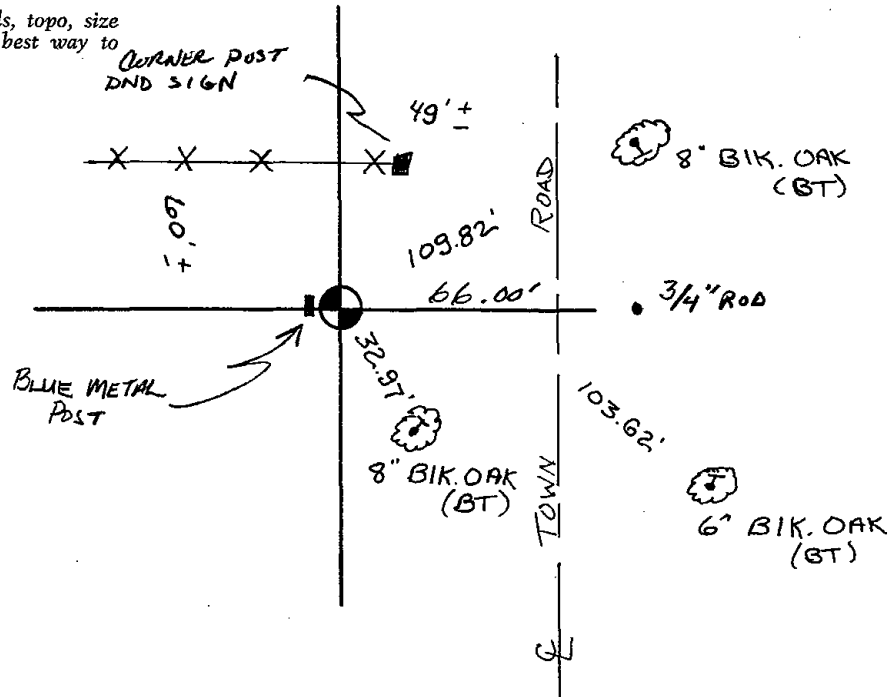
DATA SHOWN HERE ON
CERTIFIED CORRECT:

ASBK
Registered Land Surveyor

DATE: 5-4-82

TIE SKETCH

Show at least four ties, also fence lines, roads, topo, size and type of witness trees' and if off road - best way to arrive at corner.



ADAMS COUNTY

Survey Monument Record

TYPE OF MONUMENT: 30" HARRISON Mon.

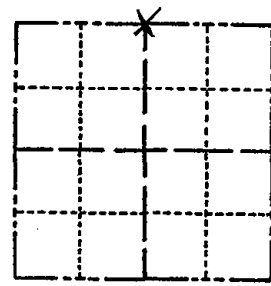
STATE PLANE COORDINATES: N _____
E _____

ELEVATION — M.S.L. DATUM: _____

THETA ANGLE: _____

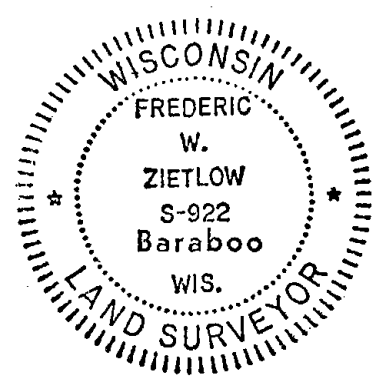
FIELD BOOK: _____ PAGE _____

CORNER NO. 877 (112)
SECTION 36
TOWN 17N
RANGE 5E



LOCATION
(Indicated by 'X')

SEAL:



BASIS FOR MONUMENT LOCATION

(Use reverse side if necessary)

Show info such as: History of corner, with reference to Vol. and pg, dates, surveyor; exact description of monument replaced; if location computed, by taped or EDM traverse; landowner remarks, etc.

CHECKED COUNTY SURVEY RECORDS FOR RESURVEYS AND NONE WERE ON FILE. THIS CORNER WAS SET EQUA-DISTANT $\frac{1}{4}$ ON LINE BETWEEN THE NE COR. $\frac{1}{4}$ NW COR. (SINGLE PROPORTION) FIT EDM. TRAVERSE OF SECTION GOOD.

MON OK - RETIED RN-TH 8/29/80

OK BS DK
ALL OK 2-5-90 KE

CERTIFIED CORRECT:

Frederic W. Zietlow

Registered Land Surveyor

DATE: JUNE 3, 1976

TIE SKETCH

(Show at least four ties)

