

31 SECTION 17 TOWN 05 RANGE

# ADAMS COUNTY

COUNTY CORNER NO: 115  
 ROMPORTOL ID: 41705312000

## PUBLIC LAND SURVEY MONUMENT RECORD

TYPE OF MONUMENT: HARRISON  
 ADAMS COUNTY COORDINATES, NAD 83 (2007)

N. 194663.635  
 E. 499405.599

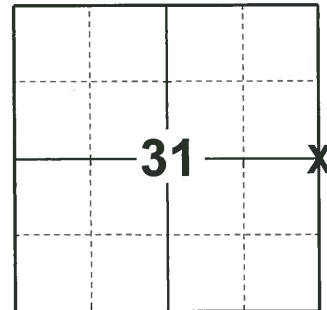
ELEVATION- - - - - DATUM - - - - -

FIELD WORK DATE: 02/19/2019

### BASIS FOR MONUMENT LOCATION

1976 - PLS-606 E.D.M TRAVERSE. THIS CORNER WAS SET BY EXTENDING THE LINE FROM THE NW CORNER THROUGH THE PK NAIL REFERENCED AS THE CORNER AND DOUBLING THE WEST LINE DISTANCE OF HOLIDAY HEIGHTS SUBDIVISION AND EXTENDING A LINE FROM THE E1/4 CORNER THROUGH SAID POINT TO THE INTERSECTION AT THE W1/4 CORNER. 2" REF. PIPE PUT CORNER AT P.K. SHOWN. A.B.K. (COUNTY SURVEYOR) DUG BACKHOE AT HIS (P.K.) LOCATION AND FOUND NOTHING. DID NOT DIG AT HARRISON LOCATION. MEASUREMENTS INDICATED LOCATION OK. DID NOT ACCEPT P.K. LOCATION. A.B.K. COUNTY SURVEYOR.

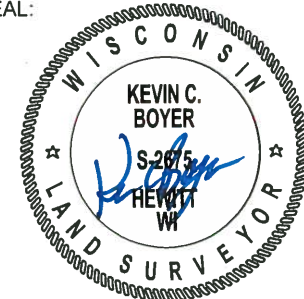
2019 - PLS-2675 FOUND HARRISON MONUMENT 4" BELOW THE ROAD SURFACE, 2 TIES, AND 1 WITNESS. THE MONUMENT AGREES WITH BOTH TIES AND WITNESS. ACCEPTED THE HARRISON MONUMENT AS THE CORNER. SET 1 NEW TIE. MEASURED TO A FOUND RIGHT-OF-WAY IRON, EXISTING TIES, AND WITNESS.



### LOCATION

(INDICATE CORNER BY "X")

SEAL:



DATA SHOWN HERE ON THIS TIE SHEET IS CORRECT AND COMPLETE TO THE BEST OF MY KNOWLEDGE AND BELIEF.

PROFESSIONAL LAND SURVEYOR

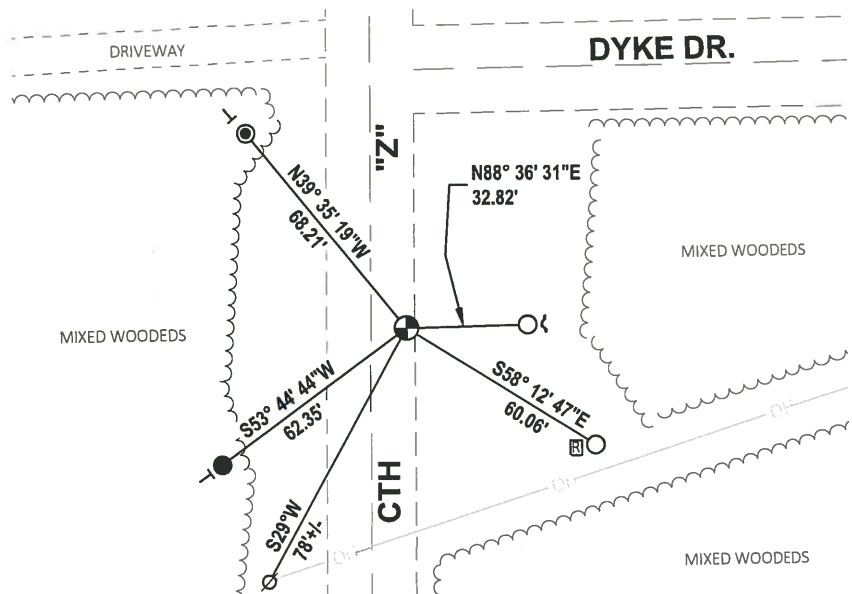
DATE 3/12/19

### - TIE SKETCH

NOTE: THE CORNER LANDS 10'± EAST OF THE CENTERLINE OF CTH "Z" AND 69'± SOUTH OF CENTERLINE OF DYKE DR .



- SET 3/4" x 18" IRON REBAR, 1.50#/FT
- FOUND 3/4" IRON ROD
- ⊙ FOUND REF. MONUMENT
- ⊕ FOUND HARRISON MONUMENT
- ⊗ WITNESS POWER POLE
- ~ STEEL FENCE POST
- VINYL "T" POST
- ⊞ RIGHT-OF-WAY GUARD POST



ADAMS COUNTY

Survey Monument Record

TYPE OF MONUMENT: HARRISON

STATE PLANE COORDINATES: N \_\_\_\_\_

E \_\_\_\_\_

ELEVATION — M.S.L. DATUM: \_\_\_\_\_

THETA ANGLE: \_\_\_\_\_

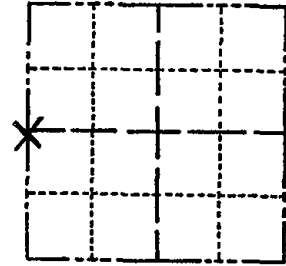
FIELD BOOK: \_\_\_\_\_ PAGE \_\_\_\_\_

CORNER NO. 1011 (115)

SECTION Sec. 32

TOWN T17N

RANGE R5E



LOCATION (Indicated by 'X')

SEAL:



BASIS FOR MONUMENT LOCATION

(Use reverse side if necessary)

Show info such as: History of corner, with reference to Vol. and pg. dates, surveyor; exact description of monument replaced; if location computed, by taped or EDM traverse; landowner remarks, etc.

E.D.M. Traverse

This corner was set by extending the line from the NW corner through the PK nail referenced as the corner and doubling the west line distance of Holiday Heights Subdivision and extending a line from the E 1/4 corner through said point to the intersection at the W 1/4 corner.

2" Ref pipe put corner at P.K. shown. A PK dug/backhoe at this (P.K) location - found nothing. Did not dig at Harrison location - measurements indicate location OK. Did not accept PK location.

CERTIFIED CORRECT.

James J. Carroll  
Registered Land Surveyor

DATE: Aug. 23, 1976

TIE SKETCH

OK 2-5-98 K2-SS  
ALL OK 8-24-94-56-SS

(Show at least four ties)

