

32 SECTION 17 TOWN 05 RANGE

ADAMS COUNTY

COUNTY CORNER NO: 116
 ROMPORTOL ID: 41705322000

PUBLIC LAND SURVEY MONUMENT RECORD

TYPE OF MONUMENT: HARRISON (BROKEN-TOP)
 ADAMS COUNTY COORDINATES, NAD 83 (2007)

N. 194801.980

E. 504665.154

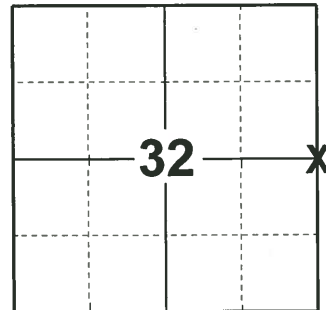
ELEVATION- _____ DATUM _____

FIELD WORK DATE: 01/31/2019

BASIS FOR MONUMENT LOCATION

1973 - PLS-878 LOCATION DETERMINED BY RETRACEMENT OF PERRY-CARRINGTON SURVEYS IN PINEORAMA.

2019 - PLS-2675 FOUND HARRISON MONUMENT (BROKEN-TOP) 4" BELOW THE ROAD SURFACE AND 3 WITNESSES. THE MONUMENT AGREES WITH ALL THE EXISTING WITNESSES. ACCEPTED THE HARRISON MONUMENT (BROKEN-TOP) AS THE CORNER. SET 4 NEW TIES AND MEASURED TO THE EXISTING WITNESS.



LOCATION
 (INDICATE CORNER BY "X")

SEAL:



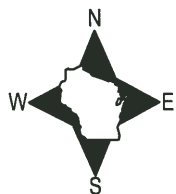
DATA SHOWN HERE ON THIS TIE SHEET IS CORRECT AND COMPLETE TO THE BEST OF MY KNOWLEDGE AND BELIEF.

PROFESSIONAL LAND SURVEYOR

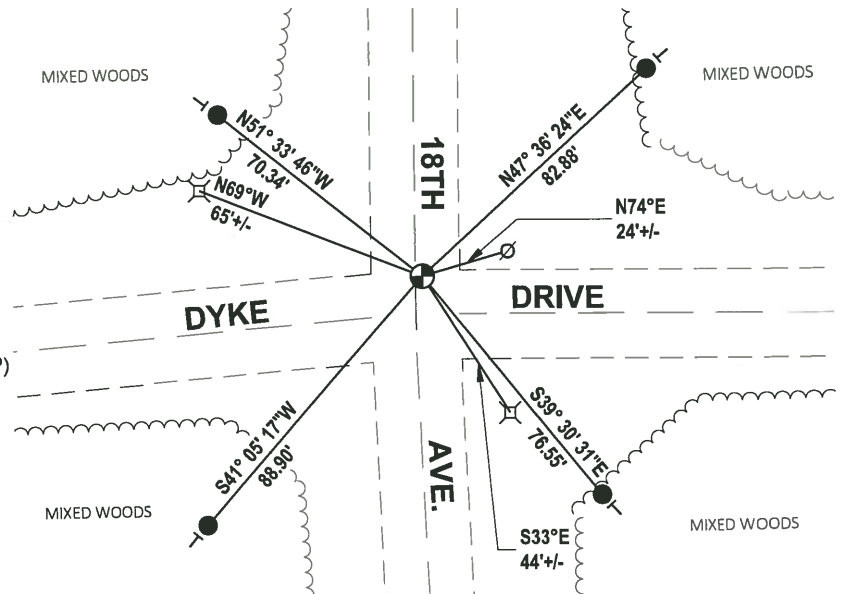
DATE 3/12/19

TIE SKETCH

NOTE: THE CORNER LANDS 2.5'± EAST OF CENTERLINE OF 18TH AVE. AND 12'± NORTH OF CENTERLINE OF DYKE DRIVE.



- SET 3/4" x 18" IRON REBAR, 1.50#/FT
- ⊕ FOUND HARRISON MONUMENT (BROKEN-TOP)
- ⊙ WITNESS POWER POLE
- ⊞ TELEPHONE PEDESTAL
- VINYL "T" POST



ADAMS COUNTY

CORNER NO. 200

Survey Monument Record

SECTION 32

TYPE OF MONUMENT: 30" HARRISON

TOWN 17

STATE PLANE COORDINATES: N _____

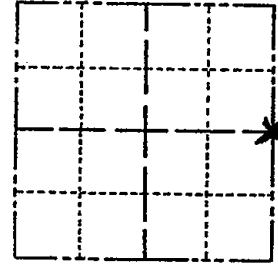
RANGE 5

E _____

ELEVATION — M.S.L. DATUM: _____

THETA ANGLE: _____

FIELD BOOK: 106 PAGE ?



LOCATION
(Indicated by 'X')

SEAL:



BASIS FOR MONUMENT LOCATION

(Use reverse side if necessary)

Show info such as: History of corner, with reference to Vol. and pg, dates, surveyor; exact description of monument replaced; if location computed, by taped or EDM traverse; landowner remarks, etc.

Set monument
September 22, 1972

Anthony B. Kiedrowski R.L.S. 878

Location determined by retracement of
Perry-Carrington surveys in Pineorama.

CORNER O.K. 10/30/75 N.P.L. & S.S.

COR OK 4/8/80 BS-SS

COR OK 5/23/85 DK.

OK 1-30-90 KZ-SS

1-NEW 8-24-94 SG-SS

OK 2-14-99 SS

CERTIFIED CORRECT:

Anthony B. Kiedrowski

Registered Land Surveyor

DATE: 7-30-73

TIE SKETCH OK 2-14-05 JG/DA

(Show at least four ties)

