

34 SECTION 17 TOWN 05 RANGE

ADAMS COUNTY

COUNTY CORNER NO: 118
 ROMPORTOL ID: 41705342000

PUBLIC LAND SURVEY MONUMENT RECORD

TYPE OF MONUMENT: HARRISON
 ADAMS COUNTY COORDINATES, NAD 83 (2007)

N. 194883.922

E. 515233.617

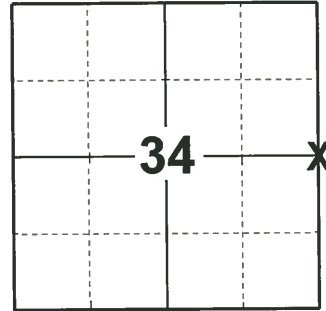
ELEVATION- _____ DATUM _____

FIELD WORK DATE: 01/09/2019

BASIS FOR MONUMENT LOCATION

1976 - PLS-922 CHECKED COUNTY SURVEY RECORDS FOR RESURVEYS AND NONE WERE ON FILE. THIS CORNER WAS SET EQUIDISTANT ON LINE BETWEEN THE NW AND SW CORNERS. OF SECTION 35, (SINGLE PROPORTION METHOD VIA E.D.M. TRAVERSE)

2019 - PLS-2675 FOUND HARRISON MONUMENT 4" BELOW WATER LINE AND 3 WITNESS TREES. THE MONUMENT AGREES WITH ALL 3 WITNESS TREES. ACCEPTED THE HARRISON MONUMENT AS THE CORNER. SET 4 NEW TIES AND MEASURED TO THE EXISTING WITNESS TREES.



LOCATION

(INDICATE CORNER BY "X")

SEAL:

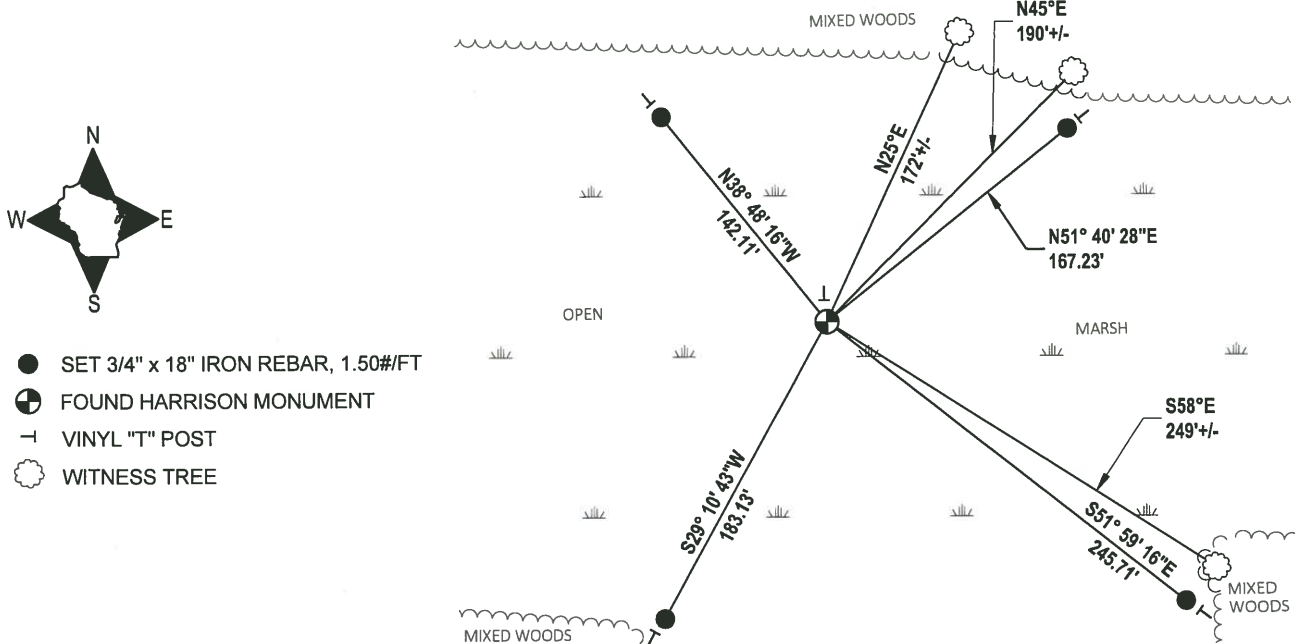


DATA SHOWN HERE ON THIS TIE SHEET IS CORRECT AND COMPLETE TO THE BEST OF MY KNOWLEDGE AND BELIEF.

PROFESSIONAL LAND SURVEYOR

DATE 3/12/19

TIE SKETCH



- SET 3/4" x 18" IRON REBAR, 1.50#/FT
- ⊕ FOUND HARRISON MONUMENT
- ┌ VINYL "T" POST
- ⊙ WITNESS TREE

ADAMS COUNTY

Survey Monument Record

TYPE OF MONUMENT: 30" HARRISON MON.

STATE PLANE COORDINATES: N _____

E _____

ELEVATION — M.S.L. DATUM: _____

THETA ANGLE: _____

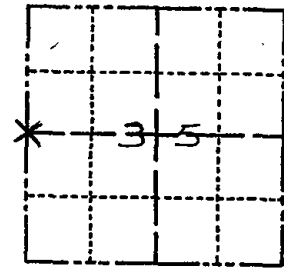
FIELD BOOK: _____ PAGE _____

CORNER NO. 874

SECTION 35

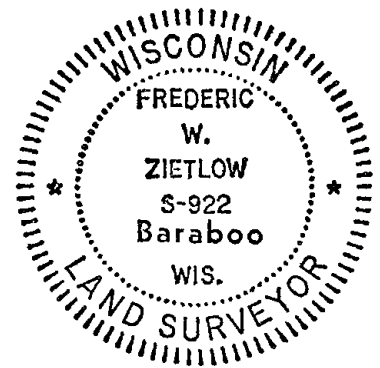
TOWN 17 N

RANGE 5E



LOCATION
(Indicated by 'X')

SEAL:



BASIS FOR MONUMENT LOCATION

(Use reverse side if necessary)

Show info such as: History of corner, with reference to Vol. and pg, dates, surveyor; exact description of monument replaced; if location computed, by taped or EDM traverse; landowner remarks, etc.

CHECKED COUNTY SURVEY RECORDS FOR RESURVEYS AND NONE WERE ON FILE THIS CORNER WAS SET EQUADISTANT ON LINE BETWEEN THE NW & SW COR. OF SECTION 35, (SINGLE PROPORTION METHOD VIA EDM. TRAVERSE)

COME IN FROM 14TH DR. TAKE LEFT FORK R/W. FOLLOW TRAIL UNTIL FORKS AGAIN. TAKE RIGHT FORK UNTIL TRAIL ENDS AT MARSH. FOLLOW MAIN RIGHT SIDE PENN. ± 1000 FT. CORNER IN MARSH OFF OF TIP OF PENN.

MON. & TIES OK RN-SK 1/20/81
" " 10-24-85 MB-SS

CERTIFIED CORRECT:

Frederic W. Zietlow

Registered Land Surveyor

DATE: FEBRUARY 25, 1976

TIE SKETCH ALL OK 10-4-90 SS-JG
ALL OK 6/6/95 JG-GR

3-NEW TIES MON. OK, 1-9-06, JG-SS
OK 12-08-10 SS

(Show at least four ties)

