

35 SECTION 17 TOWN 05 RANGE

# ADAMS COUNTY

COUNTY CORNER NO: 119  
ROMPORTOL ID: 41705352000

## PUBLIC LAND SURVEY MONUMENT RECORD

TYPE OF MONUMENT: HARRISON (BROKEN-TOP)  
ADAMS COUNTY COORDINATES, NAD 83 (2007)

N. 194964.862

E. 520547.529

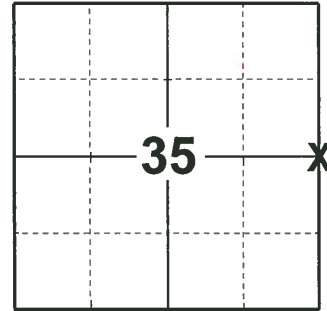
ELEVATION- - - - - DATUM - - - - -

FIELD WORK DATE: 01/10/2019

### BASIS FOR MONUMENT LOCATION

1976 - PLS-922 FOUND ONE OF COUNTY SURVEYOR M.C. SMITH'S BEARING TREES FROM A 1924 RESURVEY AND SET CORNER FROM SAME.

2019 - PLS-2675 FOUND HARRISON MONUMENT (BROKEN-TOP) 3" BELOW THE GROUND SURFACE, 1 TIE, AND 2 WITNESSES. THE MONUMENT AGREES WITH THE EXISTING TIE AND WITNESSES. ACCEPTED THE HARRISON MONUMENT (BROKEN-TOP) AS THE CORNER. SET 3 NEW TIES. MEASURED TO THE EXISTING TIE AND WITNESSES.



### LOCATION

(INDICATE CORNER BY "X")

SEAL:



DATA SHOWN HERE ON THIS TIE SHEET IS CORRECT AND COMPLETE TO THE BEST OF MY KNOWLEDGE AND BELIEF.

PROFESSIONAL LAND SURVEYOR

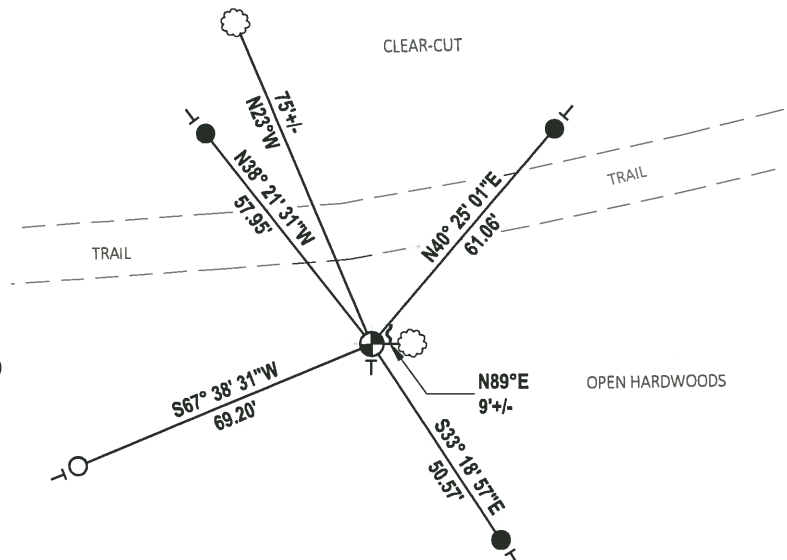
DATE 3/12/19

### TIE SKETCH

NOTE: THE CORNER LANDS 25± SOUTH OF TRAIL



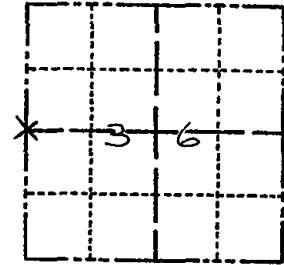
- SET 3/4" x 18" IRON REBAR, 1.50#/FT
- FOUND 3/4" IRON ROD
- ⊕ FOUND HARRISON MONUMENT (BROKEN-TOP)
- ┌ STEEL FENCE POST
- └ VINYL "T" POST
- ☼ WITNESS TREE



**ADAMS COUNTY**  
**Survey Monument Record**

CORNER NO. 880  
 SECTION 36  
 TOWN 17N  
 RANGE 5E

TYPE OF MONUMENT: 30" HARRISON MON.  
 STATE PLANE COORDINATES: N \_\_\_\_\_  
 E \_\_\_\_\_  
 ELEVATION — M.S.L. DATUM: \_\_\_\_\_  
 THETA ANGLE: \_\_\_\_\_  
 FIELD BOOK: \_\_\_\_\_ PAGE \_\_\_\_\_



LOCATION  
 (Indicated by 'X')

**BASIS FOR MONUMENT LOCATION**

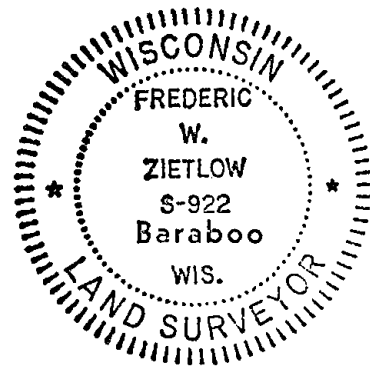
(Use reverse side if necessary)

Show info such as: History of corner, with reference to Vol. and pg, dates, surveyor; exact description of monument replaced; if location computed, by taped or EDM traverse; landowner remarks, etc.

FOUND ONE OF COUNTY SURVEYOR  
 M.C. SMITH'S BEARING TREES FROM  
 A 1924 RESURVEY AND SET CORNER  
 FROM SAME.

MON. TOP BROKEN OFF  
 CLOCK .7 FROM EAST ALONG TRAIL RN-SK 10/20181

O.K. 10-23-95 MB-SS  
 1-GONE 1-NEW 10-2-90 GR-JG  
 ALL OK 1-10-95 JG-BJ  
 " 1-21-00 SJS  
 OK, 6-23-05, JG-SS  
 11-29-10 1 NEW TIE GR-SS



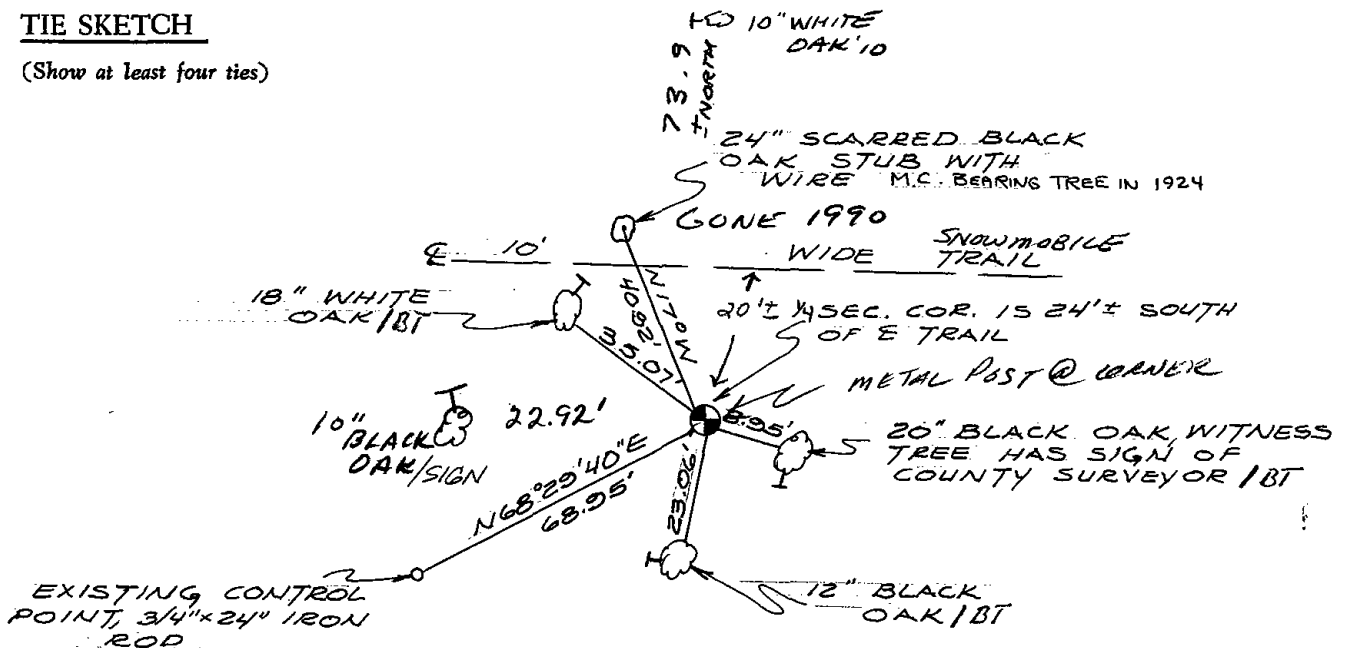
CERTIFIED CORRECT:

*Frederic W. Zietlow*  
 Registered Land Surveyor

DATE: FEBRUARY 25, 1976

**TIE SKETCH**

(Show at least four ties)



ALL TIES P.K. NAIL WITH  
 SHINER, BLAZE INSCRIBED  
 "B.T."