

PUBLIC LAND SURVEY MONUMENT RECORD

TYPE OF MONUMENT: HARRISON
 ADAMS COUNTY COORDINATES, NAD 83 (2007)

N. 192211.170

E. 507284.583

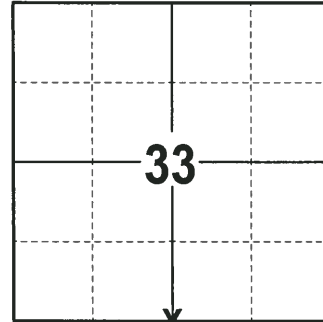
ELEVATION- DATUM

FIELD WORK DATE: 01/03/2018

BASIS FOR MONUMENT LOCATION

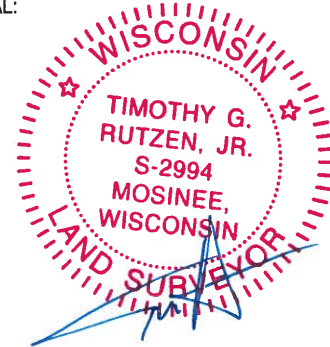
1977 - PLS 1103 FOUND ONE REMAINING STANDING BEARING TREE BY M.C. SMITH, PAST ADAMS COUNTY SURVEYOR AND REMAINS OF A SECOND (VOLUME 2, PAGE 104 OF THE ADAMS COUNTY SURVEY RECORDS). DUG BY HAND AT THE INDICATED LOCATION AND FOUND REMAINS OF A WOOD POST WITH BARBED WIRE TIED TO IT. REPLACED POST WITH A HARRISON MONUMENT AND TIED OUT. PLACED A 1-1/4"X50" IRON PIPE IN THE STUMP HOLE OF BEARING TREE TO THE SOUTHWEST. THE SECOND BEARING TREE IS DEAD, BUT STANDING. FOUND AX MARKS AND SCRIBING ON BOTH BEARING TREES.

2017 - PLS 2994 FOUND A HARRISON MONUMENT 2" ABOVE THE GROUND SURFACE AND 2 TIES. THE MONUMENT AGREES WITH THE EXISTING TIES. ACCEPTED THE HARRISON MONUMENT AS THE CORNER LOCATION. SET 2 NEW TIES AND MEASURED TO THE TIES.



LOCATION
 (INDICATE CORNER BY "X")

SEAL:

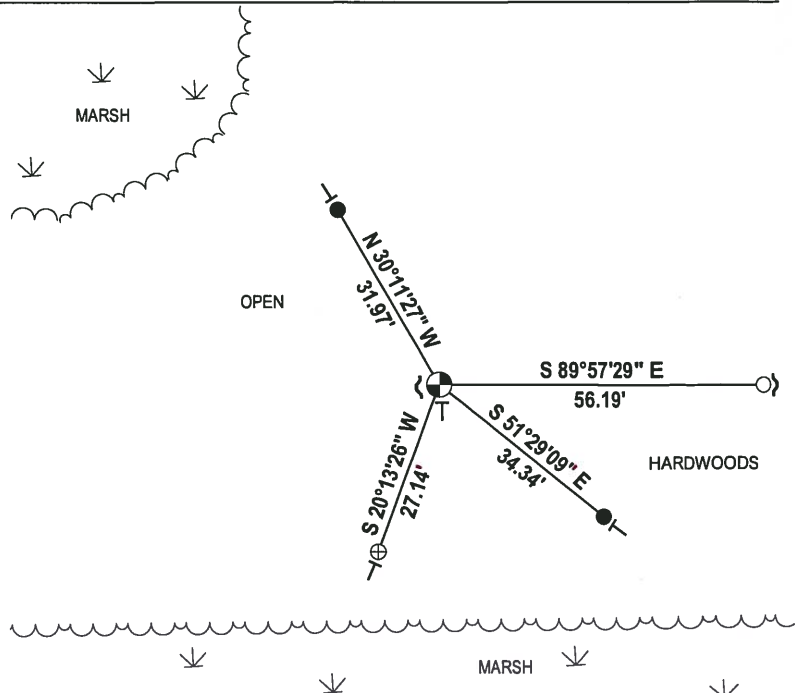
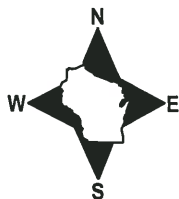


DATA SHOWN HERE ON THIS TIE SHEET IS CORRECT AND COMPLETE TO THE BEST OF MY KNOWLEDGE AND BELIEF.

PROFESSIONAL LAND SURVEYOR

DATE 2-2-18

- TIE SKETCH



- 3/4" x 18" IRON REBAR SET, 1.50#/FT
- 3/4" IRON ROD FOUND
- ⊕ 1-1/2" O.D. IRON PIPE FOUND
- ⊗ HARRISON FOUND
- ↘ STEEL FENCE POST
- ↙ VINYL "T" POST

ADAMS COUNTY

Survey Monument Record

TYPE OF MONUMENT: Harrison Monument

STATE PLANE COORDINATES: N _____
E _____

ELEVATION — M.S.L. DATUM: _____

THETA ANGLE: _____

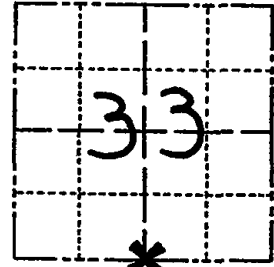
FIELD BOOK: 38 PAGE 33

CORNER NO. 126

SECTION 33

TOWN 17

RANGE 5



LOCATION
(Indicated by 'X')

SEAL:



BASIS FOR MONUMENT LOCATION

(Use reverse side if necessary)

Show info such as: History of corner, with reference to Vol. and pg, dates, surveyor; exact description of monument replaced; if location computed, by taped or EDM traverse; landowner remarks, etc.

Found one remaining standing bearing tree by M.C. Smith, past Adams County Surveyor, and remains of second (Volume 2, Page 104 of Adams County Survey Records)

Dug by hand at indicated location and found remains of wood post with barbed wire tied to it. Replaced with Harrison on 3-22-77.

Placed 1 1/4"x50" Iron Pipe in Stump hole to Southwest. Second bearing tree is dead, but standing. Found ax marks and scribing on both bearing trees.

OK - 2-14-00 SS
COR OK 4/8/80 BS-SS
" " 11-8-85 S.S.
ALL OK 9-5-90 JG-SS

CERTIFIED CORRECT:

Dale C Hagen
Registered Land Surveyor
DATE: 7-5-77

TIE SKETCH

(Show at least four ties)

NOTE

Ties in trees to nail in disc.

