

PUBLIC LAND SURVEY MONUMENT RECORD

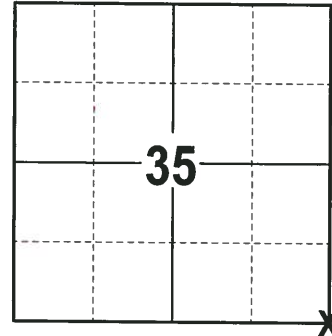
TYPE OF MONUMENT: HARRISON
 ADAMS COUNTY COORDINATES, NAD 83 (2007)

N. 192296.179

E. 520557.274

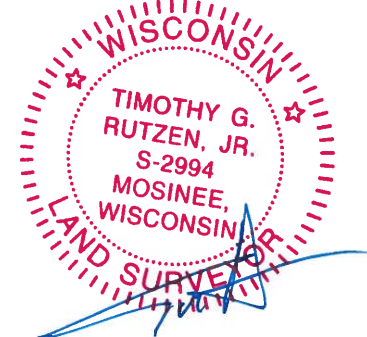
ELEVATION- DATUM

FIELD WORK DATE: 01/04/2018



LOCATION
 (INDICATE CORNER BY "X")

SEAL:



DATA SHOWN HERE ON THIS TIE SHEET IS CORRECT AND COMPLETE TO THE BEST OF MY KNOWLEDGE AND BELIEF.

PROFESSIONAL LAND SURVEYOR

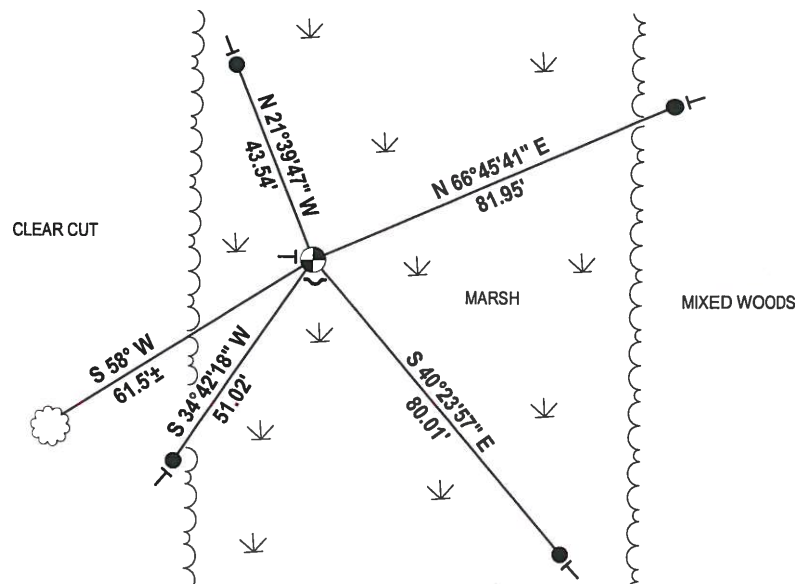
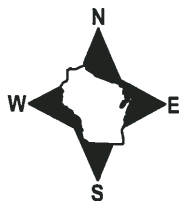
DATE 2-2-18

BASIS FOR MONUMENT LOCATION

1976 - PLS 922 CHECKED COUNTY SURVEY RECORDS FOR RESURVEYS AND NONE WERE ON FILE. FOUND A WOODEN POST WITH A SQUARED TOP AND ACCEPTED AS THE CORNER AFTER EVALUATING THE E.D.M. TRAVERSE OF SECTIONS 35 AND 36, ALSO FIT THE ORIGINAL U.S. RUNNING NOTES FOR THE LOCATION IN A SWAMP. SET A 30" HARRISON MONUMENT AT THE WOODEN POST LOCATION AND TIED OUT.

2017 - PLS 2994 FOUND A HARRISON MONUMENT 2" ABOVE THE GROUND SURFACE AND 1 WITNESS TREE. THE MONUMENT AGREES WITH THE EXISTING WITNESS TREE. ACCEPTED THE HARRISON MONUMENT AS THE CORNER LOCATION. SET 4 NEW TIES AND MEASURED TO THE TIES AND WITNESS TREE.

- TIE SKETCH



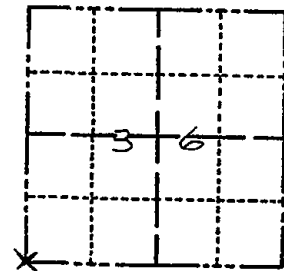
- 3/4" x 18" IRON REBAR SET, 1.50#/FT
- ⊕ HARRISON FOUND
- ~ STEEL FENCE POST
- └ VINYL "T" POST
- ☼ WITNESS TREE FOUND

ADAMS COUNTY

Survey Monument Record

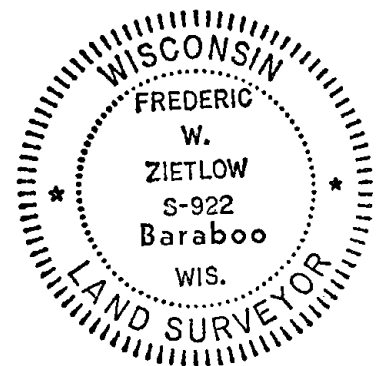
TYPE OF MONUMENT: 30" HARRISON MON.
 STATE PLANE COORDINATES: N 43° 53' 38.8"
 HAND HELD GPS E 89° 51' 27.0"
 ELEVATION — M.S.L. DATUM: _____
 THETA ANGLE: _____
 FIELD BOOK: _____ PAGE _____

CORNER NO. 878
 SECTION 36
 TOWN 17 N
 RANGE 5 E



LOCATION
(Indicated by 'X')

SEAL:



BASIS FOR MONUMENT LOCATION

(Use reverse side if necessary)

Show info such as: History of corner, with reference to Vol. and pg. dates, surveyor; exact description of monument replaced; if location computed, by taped or EDM traverse; landowner remarks, etc.

CHECKED COUNTY SURVEY RECORDS FOR RESURVEYS AND NONE WERE ON FILE.
 FOUND WOODEN POST WITH SQUARED TOP AND ACCEPTED AS CORNER, AFTER EVALUATING EDM. TRAVERSE OF SECTIONS 35 & 36. ALSO FIT ORIGINAL U.S. RUNNING NOTES FOR LOCATION IN SWAMP.
 MON. & TIES OK RN-TH 1/29/81
 " " O.K. 11-7-85 GR-SS
 ALL OK 10-4-90 SS-JG
 1 TIE 6/6/95 CR
 OK 1-9-06 JG-SS
 1 NEW TIE 12-06-10 SS

CERTIFIED CORRECT:

Frederic W. Zietlow

Registered Land Surveyor

DATE: FEBRUARY 25, 1976

TIE SKETCH

(Show at least four ties)

WALK SOUTH FROM P.P. 53/5
 1600' ALONG CREEK LINE

