

## PUBLIC LAND SURVEY MONUMENT RECORD

TYPE OF MONUMENT: HARRISON (BROKEN-TOP)  
 ADAMS COUNTY COORDINATES, NAD 83 (2007)

N. 224318.443

E. 544124.471

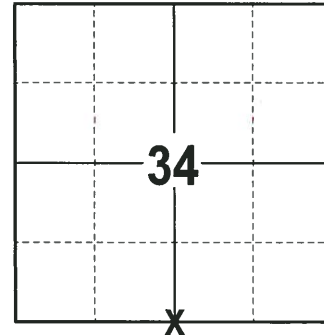
ELEVATION-      DATUM     

FIELD WORK DATE: 01/08/2018

### BASIS FOR MONUMENT LOCATION

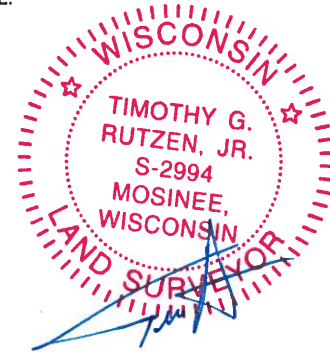
1973 - PLS 878 CALCULATED CORNER LOCATION BY RETRACEMENT OF SAM MULLEN'S SURVEY. SET HARRISON AND TIED OUT.

2017 - PLS 2994 FOUND A HARRISON MONUMENT WITH A BROKEN-TOP FLUSH WITH THE GROUND SURFACE AND 1 WITNESS TREE. THE MONUMENT AGREES WITH THE EXISTING WITNESS TREE. ACCEPTED THE HARRISON MONUMENT WITH A BROKEN-TOP AS THE CORNER LOCATION. SET 4 NEW TIES AND MEASURED TO THE TIES AND WITNESS TREE.



**LOCATION**  
 (INDICATE CORNER BY "X")

SEAL:



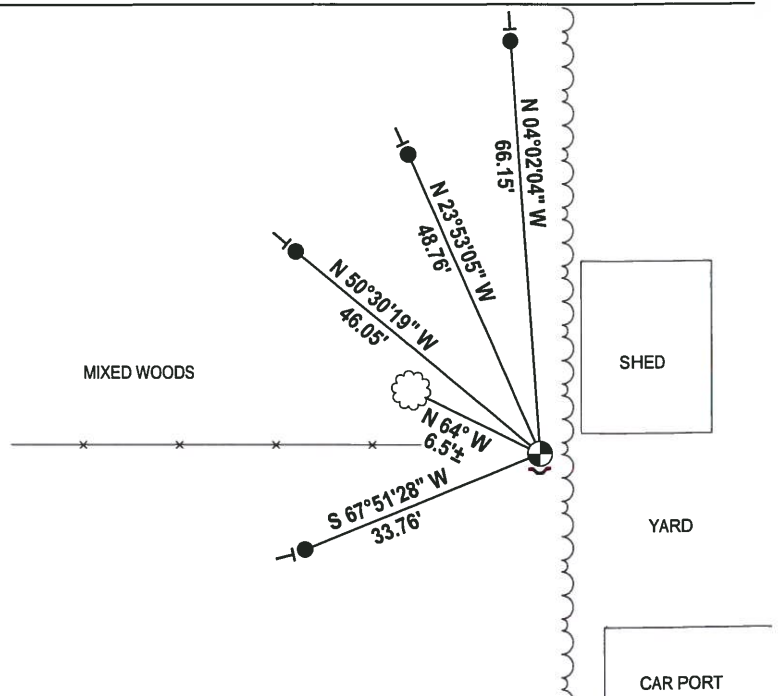
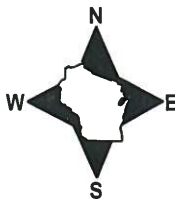
DATA SHOWN HERE ON THIS TIE SHEET IS CORRECT AND COMPLETE TO THE BEST OF MY KNOWLEDGE AND BELIEF.

PROFESSIONAL LAND SURVEYOR

DATE 2-2-18

### - TIE SKETCH

NOTE: THE CORNER FALLS 7±  
 SOUTHWEST OF THE SOUTHWEST  
 CORNER OF THE SHED AND 39±  
 NORTHWEST OF THE NORTHWEST  
 CORNER OF THE CAR PORT.



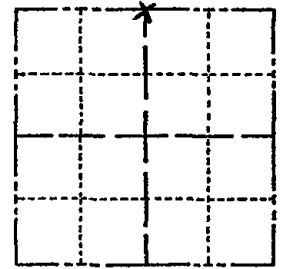
- 3/4" x 18" IRON REBAR SET, 1.50#/FT
- ⊕ HARRISON (BROKEN-TOP) FOUND
- ~ STEEL FENCE POST
- VINYL "T" POST
- ☁ WITNESS TREE FOUND

# ADAMS COUNTY

## Survey Monument Record

CORNER NO. 336  
 SECTION 3  
 TOWN 17  
 RANGE 6

TYPE OF MONUMENT: Harrison  
 STATE PLANE COORDINATES: N \_\_\_\_\_  
 E \_\_\_\_\_  
 ELEVATION — M.S.L. DATUM: \_\_\_\_\_  
 THETA ANGLE: \_\_\_\_\_  
 FIELD BOOK: 108 PAGE 128



LOCATION  
(Indicated by 'X')

SEAL:



### BASIS FOR MONUMENT LOCATION

(Use reverse side if necessary)

Show info such as: History of corner, with reference to Vol. and pg. dates, surveyor; exact description of monument replaced; if location computed, by taped or EDM traverse; landowner remarks, etc.

Established by  
 retrace ment of  
 Sam Miller Survey

CORNER O.K. 7-20-75 CS

ALL OK 7-12-85 SS-DK

CORNER OK 1-GONE 0-NEW 7-9-90 JG  
 1-GONE, 2-NEW TIE 7-27-94 JG-BS

CERTIFIED CORRECT:

Anthony Kiedrowski  
 Registered Land Surveyor

DATE: 9-5-73

### TIE SKETCH

ALL OK, 1-6-00 JG  
 ALL OK, 1-24-05 JG

(Show at least four ties) 2-4-10 SS

