

PUBLIC LAND SURVEY MONUMENT RECORD

TYPE OF MONUMENT: HARRISON (BROKEN-TOP)
ADAMS COUNTY COORDINATES, NAD 83 (2007)

N. 224369.837

E. 552054.437

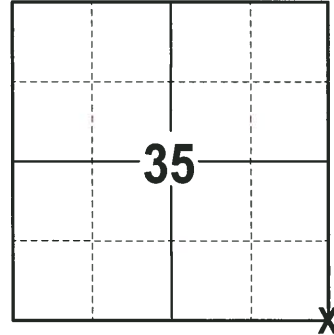
ELEVATION- DATUM

FIELD WORK DATE: 01/08/2018

BASIS FOR MONUMENT LOCATION

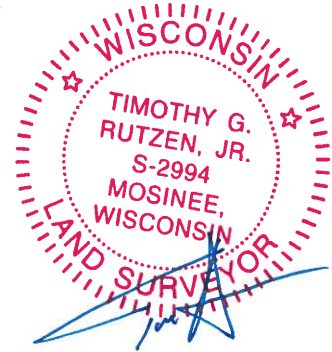
1972 - PLS 981 SET A 30" HARRISON MONUMENT AT THE CORNER LOCATION AND TIED OUT.

2017 - PLS 2994 FOUND A HARRISON MONUMENT WITH A BROKEN-TOP 18" BELOW THE ROAD SURFACE. FOUND NO EVIDENCE OF ANY TIES OR WITNESSES. ACCEPTED THE HARRISON MONUMENT WITH A BROKEN-TOP AS THE BEST EVIDENCE OF THE CORNER LOCATION. SET 4 NEW TIES AND MEASURED TO THE TIES.



LOCATION
(INDICATE CORNER BY "X")

SEAL:



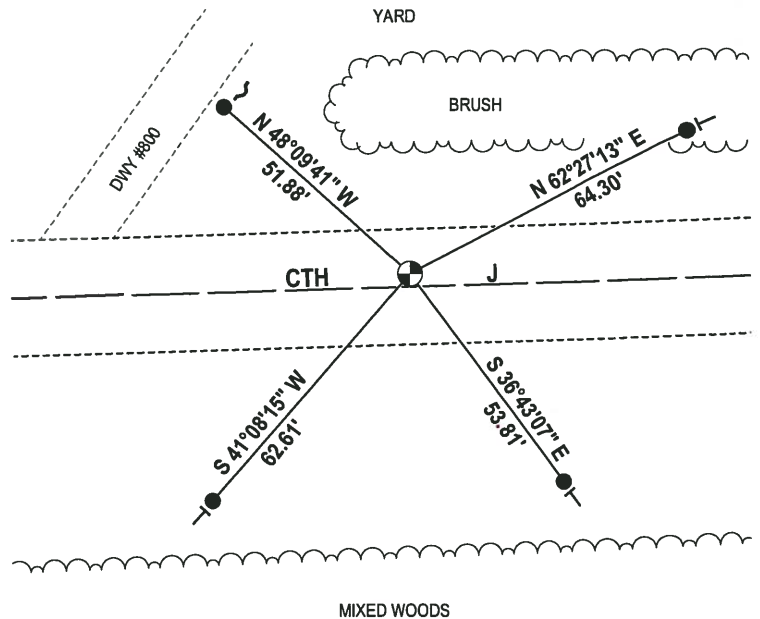
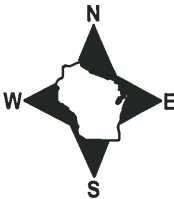
DATA SHOWN HERE ON THIS TIE SHEET IS CORRECT AND COMPLETE TO THE BEST OF MY KNOWLEDGE AND BELIEF.

PROFESSIONAL LAND SURVEYOR

DATE 2-2-18

- TIE SKETCH -

NOTE: THE CORNER FALLS 3'± NORTH OF THE CENTERLINE OF CTH AND 350'± EAST OF THE CENTERLINE OF 8TH AVE.



- 3/4" x 18" IRON REBAR SET, 1.50#/FT
- ⊕ HARRISON (BROKEN-TOP) FOUND
- ↙ SIGN FIRE #800
- VINYL "T" POST

ADAMS COUNTY

Survey Monument Record

TYPE OF MONUMENT: 30" HARRISON

STATE PLANE COORDINATES: N _____ E _____

ELEVATION - M.S.L. DATUM: _____

THETA ANGLE: _____

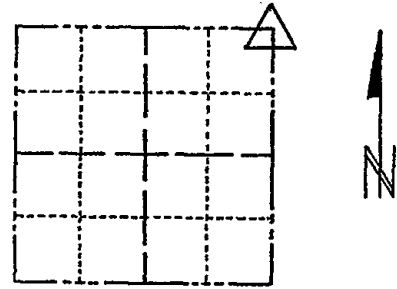
FIELD BOOK: 103 PAGE 55

CORNER NO. 100

SECTION 2

TOWN 17

RANGE 6



LOCATION (Indicated by 'X')

SEAL:

BASIS FOR MONUMENT LOCATION

(Use reverse side if necessary)

Show info such as: History of corner, with reference to Vol. and pg, dates, surveyor; exact description of monument replaced; if location computed, by taped or EDM traverse; landowner remarks, etc.

Set monument

April 27, 1972

Sam T. Millem R.L.S. S-981

Harrison O.K. 9-20-75 S.J.S.
OK 1/23/80 RN-55

1 GONE NO NEW SS-DK

1 NEW 2-6-90 KZ-CR

ALL OK 7-29-94 JG-BS

ALL OK 1-6-00, JG

CERTIFIED CORRECT:

Registered Land Surveyor

DATE:

TIE SKETCH 1-GONE, 1-NEW, 1-24-05-JG

(Show at least four ties)

