

02  
SECTION

17  
TOWN

06  
RANGE

# ADAMS COUNTY

COUNTY CORNER NO: 19  
ROMPORTOL ID: 41706022000

## PUBLIC LAND SURVEY MONUMENT RECORD

TYPE OF MONUMENT: HARRISON  
ADAMS COUNTY COORDINATES, NAD 83 (2007)

N. 221512.000

E. 552086.897

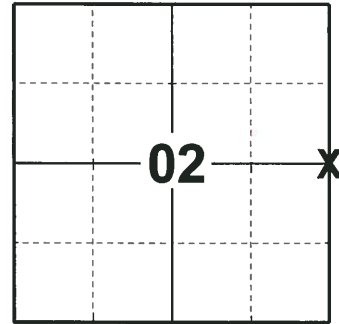
ELEVATION- \_\_\_\_\_ DATUM \_\_\_\_\_

FIELD WORK DATE: 07/31/2018

### BASIS FOR MONUMENT LOCATION

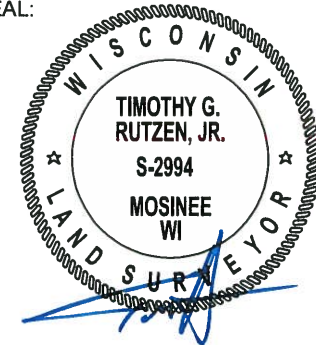
1982 - PLS 878 CALCULATED THE CORNER POSITION BY A RETRACEMENT OF PERRY-CARRINGTON, INC. SURVEYS IN THE SW QUARTER OF SECTION 1. THE CORNER WAS PREVIOUSLY ESTABLISHED 47'± NORTH OF HERE BY SAM MULLEN. NOTE: THE WORK TO SET THIS CORNER AS IT NOW EXISTS WAS DONE PRIOR TO 1974. SET A HARRISON AT THE CALCULATED CORNER POSITION AND TIED OUT.

2018 - PLS 2994 FOUND A HARRISON MONUMENT 3" BELOW THE GROUND SURFACE, 1 TIE AND 2 PROPERTY IRONS. THE MONUMENT AGREES WITH THE EXISTING TIE. ACCEPTED THE HARRISON MONUMENT AS THE CORNER LOCATION. SET 2 NEW TIES AND MEASURED TO THE TIES AND PROPERTY IRONS.



**LOCATION**  
(INDICATE CORNER BY "X")

SEAL:



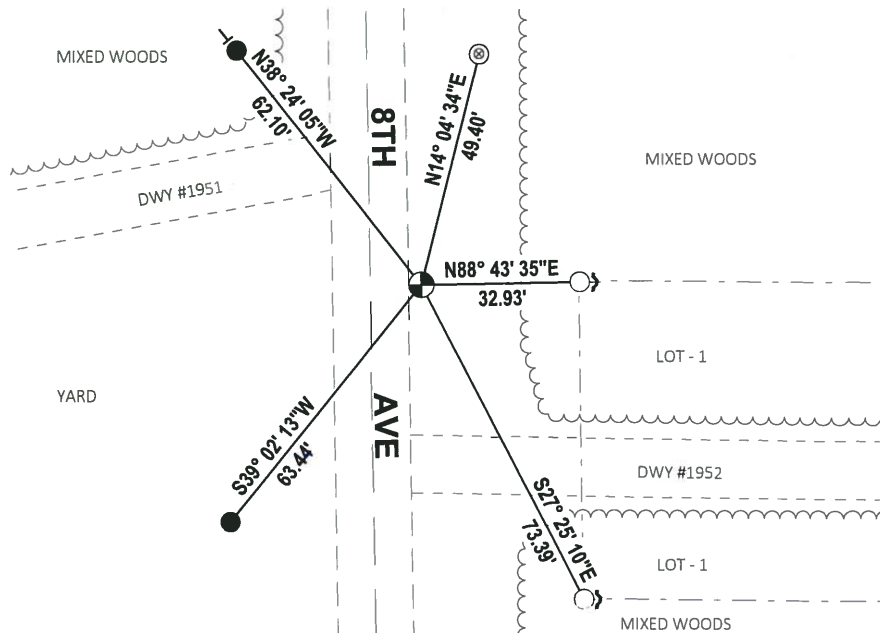
DATA SHOWN HERE ON THIS TIE SHEET IS CORRECT AND COMPLETE TO THE BEST OF MY KNOWLEDGE AND BELIEF.

PROFESSIONAL LAND SURVEYOR

DATE 8-30-18

### - TIE SKETCH

NOTE: THE CORNER FALLS 11'± EAST OF THE CENTERLINE OF 8TH AVE.



- SET 3/4" x 18" IRON REBAR, 1.50#/FT
- FOUND 3/4" IRON ROD
- ⊗ FOUND 1-1/2" O.D. IRON PIPE
- ⊕ FOUND HARRISON MONUMENT
- ↙ STEEL FENCE POST
- ← VINYL "T" POST



