

04  
SECTION

17  
TOWN

06  
RANGE

# ADAMS COUNTY

COUNTY CORNER NO: 27  
ROMPORTOL ID: 4170604000

## PUBLIC LAND SURVEY MONUMENT RECORD

TYPE OF MONUMENT: HARRISON (BROKEN-TOP)  
ADAMS COUNTY COORDINATES, NAD 83 (2007)

N. 218842.733

E. 541489.063

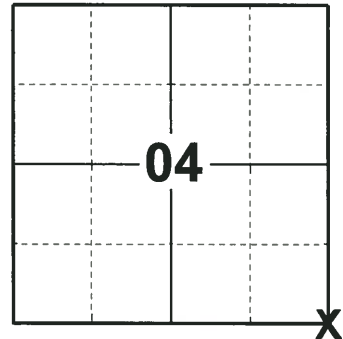
ELEVATION-          DATUM         

FIELD WORK DATE: 08/06/2018

### BASIS FOR MONUMENT LOCATION

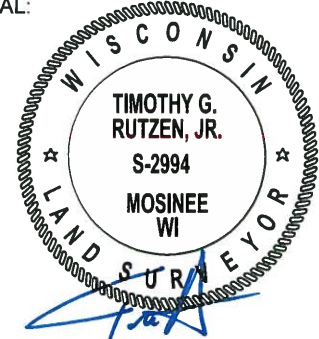
1973 - PLS 878 EXCAVATED WITH A BACKHOE AND FOUND A 10" x 16" SANDSTONE. LOWERED THE STONE AND SET A HARRISON ON TOP AND TIED OUT.

2018 - PLS 2994 FOUND A HARRISON MONUMENT WITH A BROKEN-TOP FLUSH WITH THE ROAD SURFACE AND 2 WITNESSES. THE MONUMENT AGREES WITH THE EXISTING WITNESSES. ACCEPTED THE HARRISON MONUMENT WITH A BROKEN-TOP AS THE CORNER LOCATION. SET 4 NEW TIES AND MEASURED TO THE TIES AND WITNESSES.



LOCATION  
(INDICATE CORNER BY "X")

SEAL:



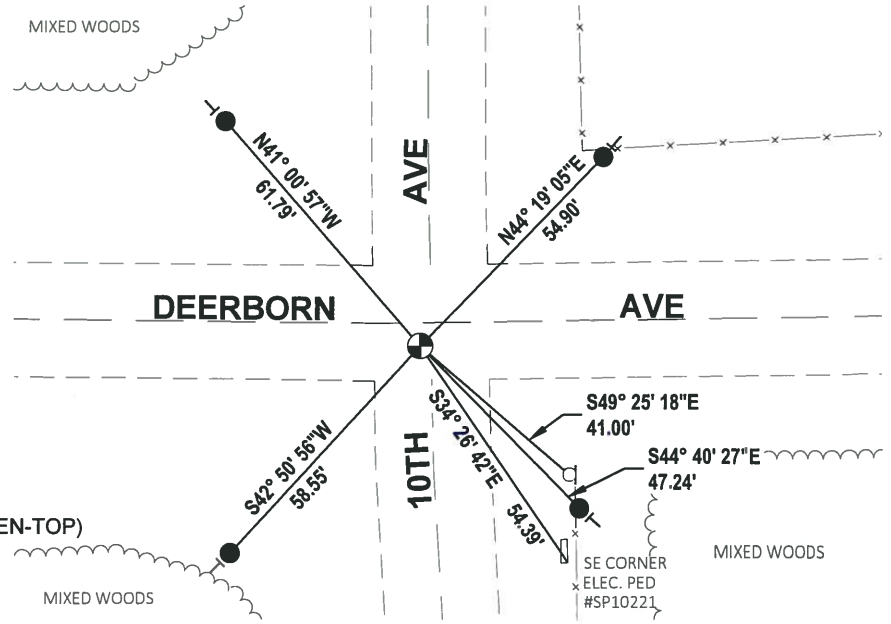
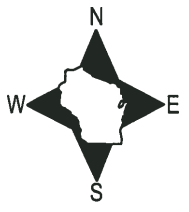
DATA SHOWN HERE ON THIS TIE SHEET IS CORRECT AND COMPLETE TO THE BEST OF MY KNOWLEDGE AND BELIEF.

PROFESSIONAL LAND SURVEYOR

DATE 8-30-18

### TIE SKETCH

NOTE: THE CORNER FALLS 5± SOUTH OF THE CENTERLINE OF DEERBORN AVE AND 2± WEST OF THE CENTERLINE OF 10TH AVE.



- SET 3/4" x 18" IRON REBAR, 1.50#/FT
- ⊕ FOUND HARRISON MONUMENT (BROKEN-TOP)
- ⊠ WITNESS STREET SIGN
- ⊣ VINYL "T" POST

ADAMS COUNTY

Survey Monument Record

TYPE OF MONUMENT: 30" HARRISON

STATE PLANE COORDINATES: N \_\_\_\_\_

E \_\_\_\_\_

ELEVATION — M.S.L. DATUM: \_\_\_\_\_

THETA ANGLE: \_\_\_\_\_

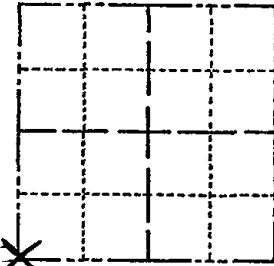
FIELD BOOK: 108 PAGE 110

CORNER NO. 321

SECTION 3

TOWN 17

RANGE 6



LOCATION (Indicated by 'X')

SEAL:

BASIS FOR MONUMENT LOCATION

(Use reverse side if necessary)

Show info such as: History of corner, with reference to Vol. and pg, dates, surveyor; exact description of monument replaced; if location computed, by taped or EDM traverse; landowner remarks, etc.

Excavated with backhoe. Found 10" x 10" x 16" sandstone. Lowered stone and set Harrison on top.



COR. O.K. 9-20-75 ES  
COR. BEERS  
NEEDS TIES 1/23/80 RN-SS

See Reverse SIDE

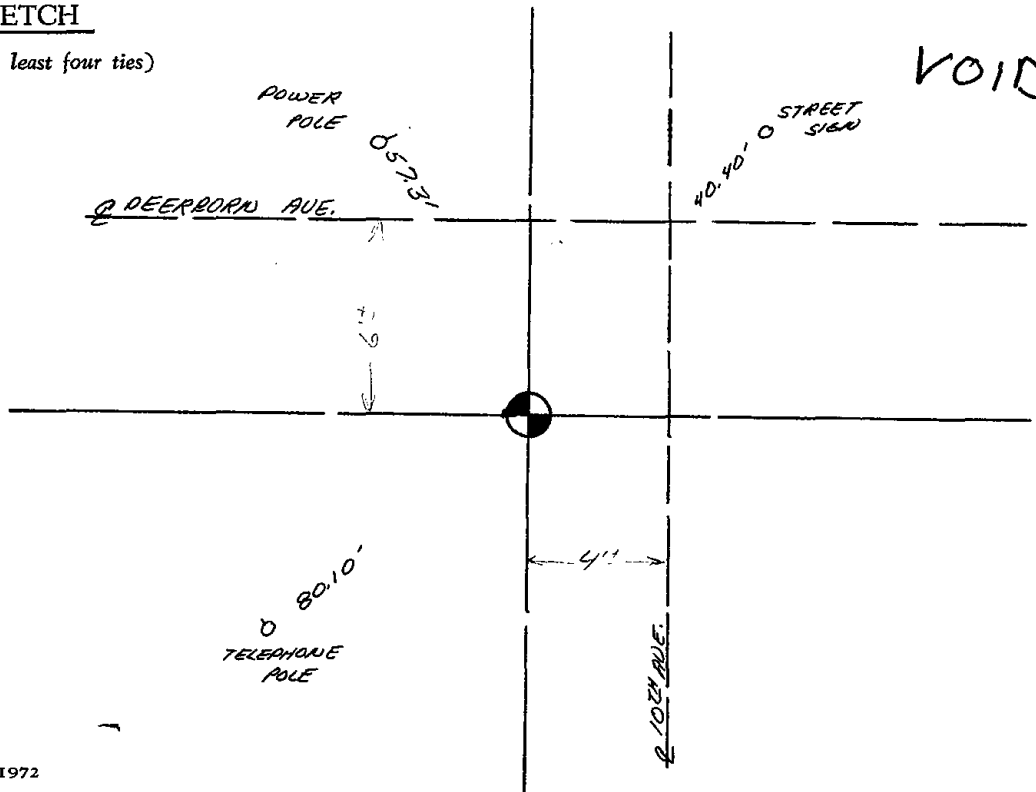
CERTIFIED CORRECT:

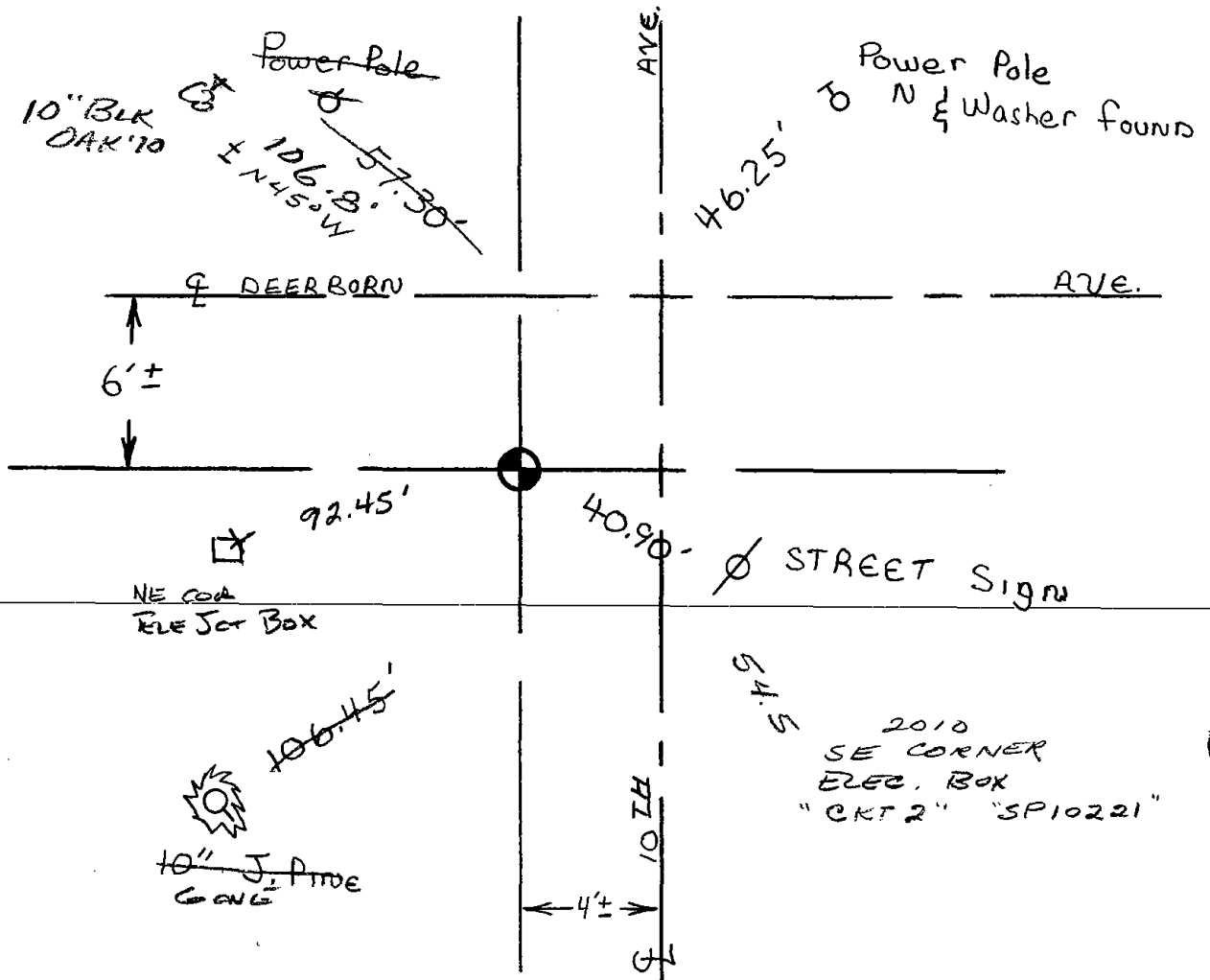
*Anthony B. Kiedrowski*  
Registered Land Surveyor

DATE: July, 1973

TIE SKETCH

(Show at least four ties)





COR OK 7-12-85 DK-SS

ALL OK 2-6-90 KZ-GR

ALL OK 7-27-94 JG-BS

1-GONE, 1-NEW TIE 2-10-00, JG-82

OK, 1-24-05 - JG