

## PUBLIC LAND SURVEY MONUMENT RECORD

TYPE OF MONUMENT: HARRISON  
 ADAMS COUNTY COORDINATES, NAD 83 (2007)

N. 218911.494

E. 546776.230

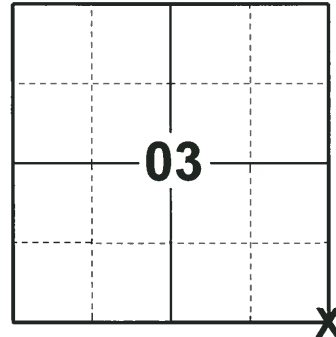
ELEVATION- \_\_\_\_\_ DATUM \_\_\_\_\_

FIELD WORK DATE: 08/06/2018

### BASIS FOR MONUMENT LOCATION

1973 - PLS 878 EXCAVATED WITH A BACKHOE AND FOUND A 3/4" x 24" IRON ROD. REPLACED THE IRON ROD WITH A HARRISON AND TIED OUT. AFTER CHECKING ITS LOCATION BY A TRAVERSE OF THE ENTIRE SECTION.

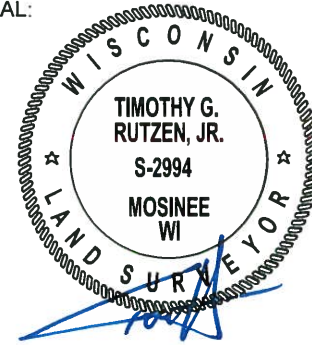
2018 - PLS 2994 FOUND A HARRISON MONUMENT 4" BELOW THE ROAD SURFACE AND 1 TIE. THE MONUMENT AGREES WITH THE EXISTING TIE. ACCEPTED THE HARRISON MONUMENT AS THE CORNER LOCATION. SET 3 NEW TIES AND MEASURED TO THE TIES.



**LOCATION**

(INDICATE CORNER BY "X")

SEAL:



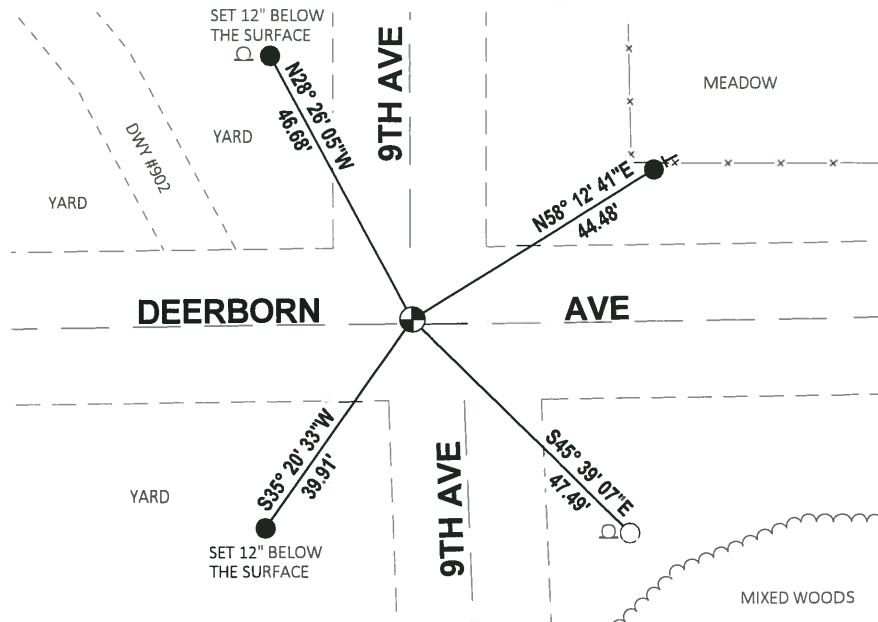
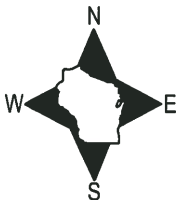
DATA SHOWN HERE ON THIS TIE SHEET IS CORRECT AND COMPLETE TO THE BEST OF MY KNOWLEDGE AND BELIEF.

PROFESSIONAL LAND SURVEYOR

DATE 8-30-18

### - TIE SKETCH

NOTE: THE CORNER FALLS 0.5'± EAST OF THE CENTERLINE OF THE NORTH SIDE OF 9TH AVE AND 0.5'± NORTH OF THE CENTERLINE OF DEERBORN AVE.



- SET 3/4" x 18" IRON REBAR, 1.50#/FT
- FOUND 3/4" IRON ROD
- FOUND HARRISON MONUMENT
- STOP SIGN
- ← VINYL "T" POST

ADAMS COUNTY

Survey Monument Record

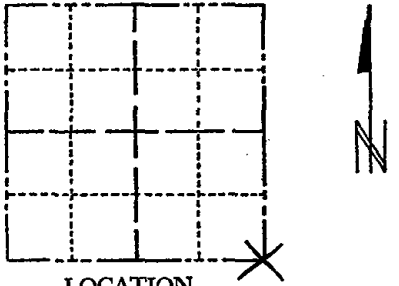
TYPE OF MONUMENT: 30" HARRISON
STATE PLANE COORDINATES: N
E
ELEVATION - M.S.L. DATUM:
THETA ANGLE:
FIELD BOOK: 108 PAGE 114

CORNER NO. 322
SECTION 3
TOWN 17
RANGE 6

BASIS FOR MONUMENT LOCATION

(Use reverse side if necessary)

Show info such as: History of corner, with reference to Vol. and pg, dates, surveyor; exact description of monument replaced; if location computed, by taped or EDM traverse; landowner remarks, etc.



LOCATION (Indicated by 'X')

SEAL:



Excavated with backhoe. Found 3/4" x 24" iron rod, and replaced it with Harrison after checking its location by a traverse of the entire Section 10.

COR O.K. 9-20-75 SS
OK 11/23/80 RN-SS

ALL OK 7-12-85 DK-SS
OK 2-6-90 KZ-CR

ALL OK 7-27-94 JG-BS

CERTIFIED CORRECT:

July, 1973
Registered Land Surveyor
DATE: [Signature]

TIE SKETCH ALL OK, 1-6-00, -JG
1-GONE, 1-NEW, 1-24-85 - JG
(Show at least four ties)

2 NEW TIES 7-21-10 SS

