

PUBLIC LAND SURVEY MONUMENT RECORD

TYPE OF MONUMENT: HARRISON (BROKEN-TOP)
 ADAMS COUNTY COORDINATES, NAD 83 (2007)

N. 218938.179

E. 554749.133

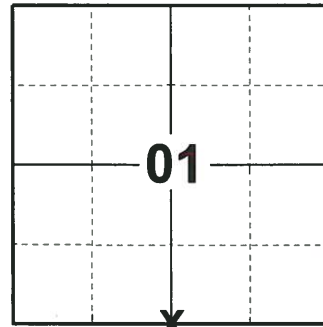
ELEVATION- - - - DATUM - - - -

FIELD WORK DATE: 07/31/2018

BASIS FOR MONUMENT LOCATION

1974 - PLS 878 THE CORNER WAS ESTABLISHED ON LINE AND EQUIDISTANT BETWEEN SECTION CORNERS. THIS MATCHES PERRY-CARRINGTON SURVEY IN THE SOUTHWEST QUARTER. SET A HARRISON MONUMENT AT THE CORNER LOCATION AND TIED OUT.

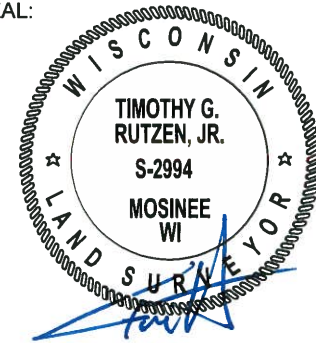
2018 - PLS 2994 FOUND A HARRISON MONUMENT WITH A BROKEN-TOP 3" BELOW THE ROAD SURFACE AND 2 TIES. THE MONUMENT AGREES WITH THE EXISTING TIES. ACCEPTED THE HARRISON MONUMENT WITH A BROKEN-TOP AS THE CORNER LOCATION. SET 2 NEW TIES AND MEASURED TO THE TIES.



LOCATION

(INDICATE CORNER BY "X")

SEAL:



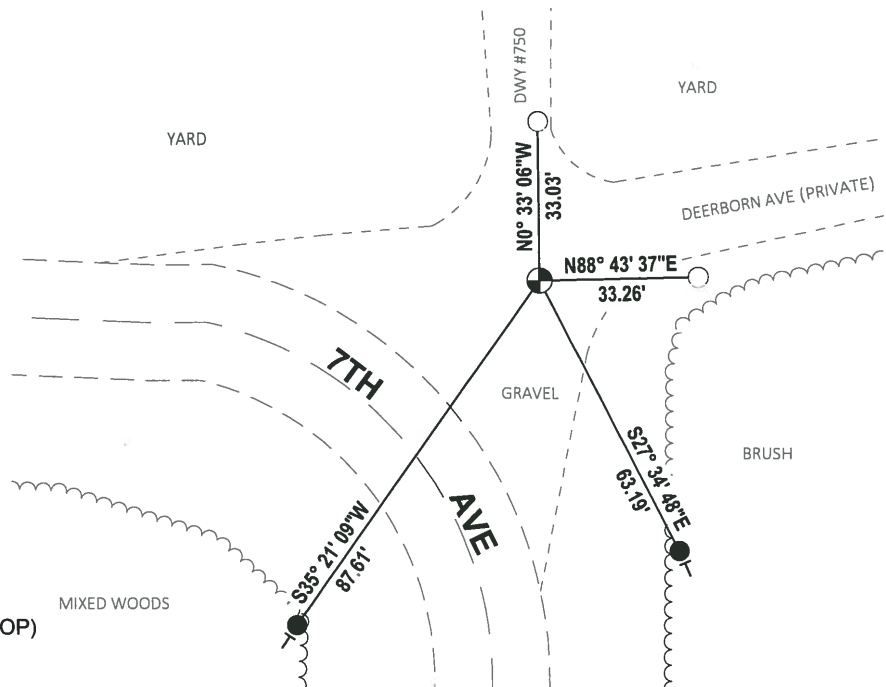
DATA SHOWN HERE ON THIS TIE SHEET IS CORRECT AND COMPLETE TO THE BEST OF MY KNOWLEDGE AND BELIEF.

PROFESSIONAL LAND SURVEYOR

DATE 8-30-18

- TIE SKETCH -

NOTE: THE CORNER FALLS 43'± NORTHEAST OF THE CENTERLINE OF 7TH AVE.



- SET 3/4" x 18" IRON REBAR, 1.50#/FT
- FOUND 3/4" IRON ROD
- ⊕ FOUND HARRISON MONUMENT (BROKEN-TOP)
- VINYL "T" POST

ADAMS COUNTY

Survey Monument Record

TYPE OF MONUMENT: Harrison Standard

STATE PLANE COORDINATES: N _____

E _____

ELEVATION — M.S.L. DATUM: _____

THETA ANGLE: _____

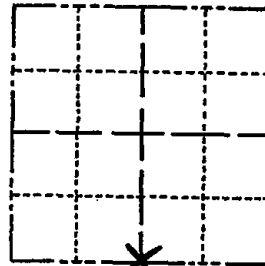
FIELD BOOK: _____ PAGE _____

CORNER NO. 403 ⁽³²⁾

SECTION 1

TOWN 17

RANGE 6



LOCATION
(Indicated by 'X')



BASIS FOR MONUMENT LOCATION

(Use reverse side if necessary)

Show info such as: History of corner, with reference to Vol. and pg, dates, surveyor; exact description of monument replaced; if location computed, by taped or EDM traverse; landowner remarks, etc.

South Quarter corner set on straight line equidistant between section corners. This matches Perry-Carrington survey in the Southwest quarter.

SEAL:

COR. O.K. 9-20-75 SS
COR. BEEPS 1123180 RN-SS
2-GONE, 1-NEW
3 TIES OK - 1-31-90 KZ-GR.
ALL OK 7-29-94 JG-BS

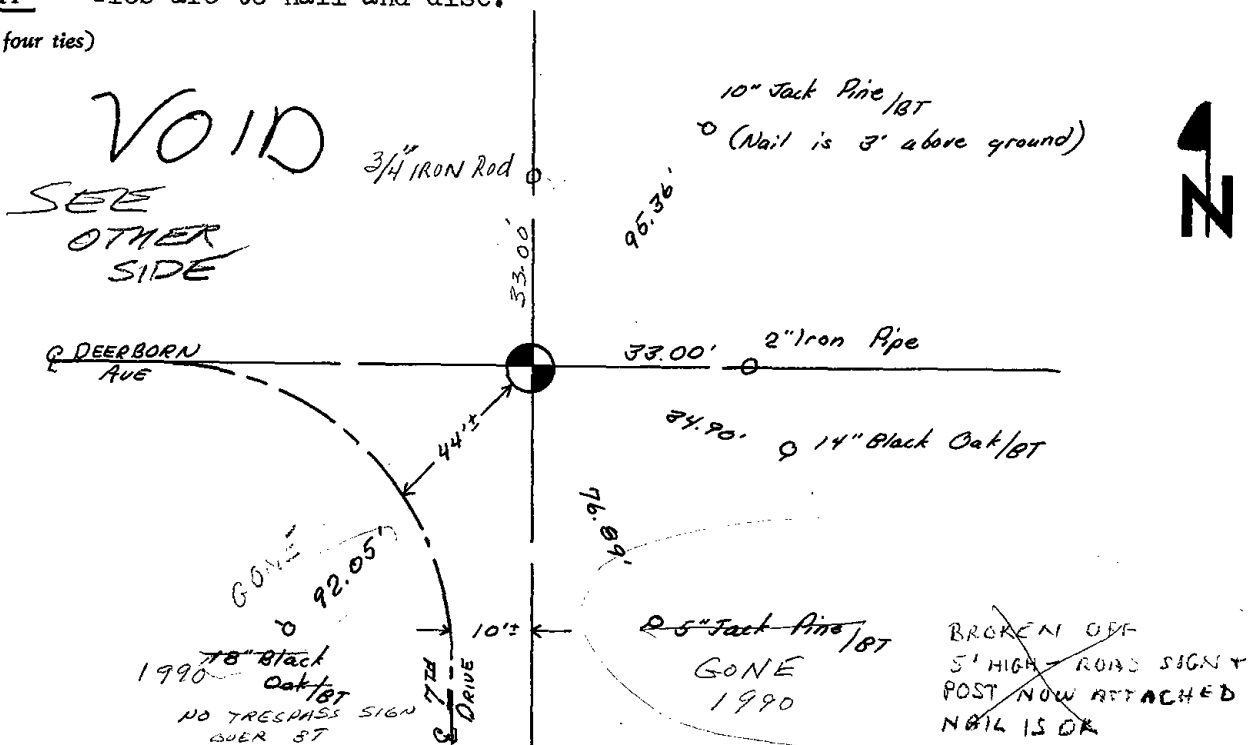
CERTIFIED CORRECT:

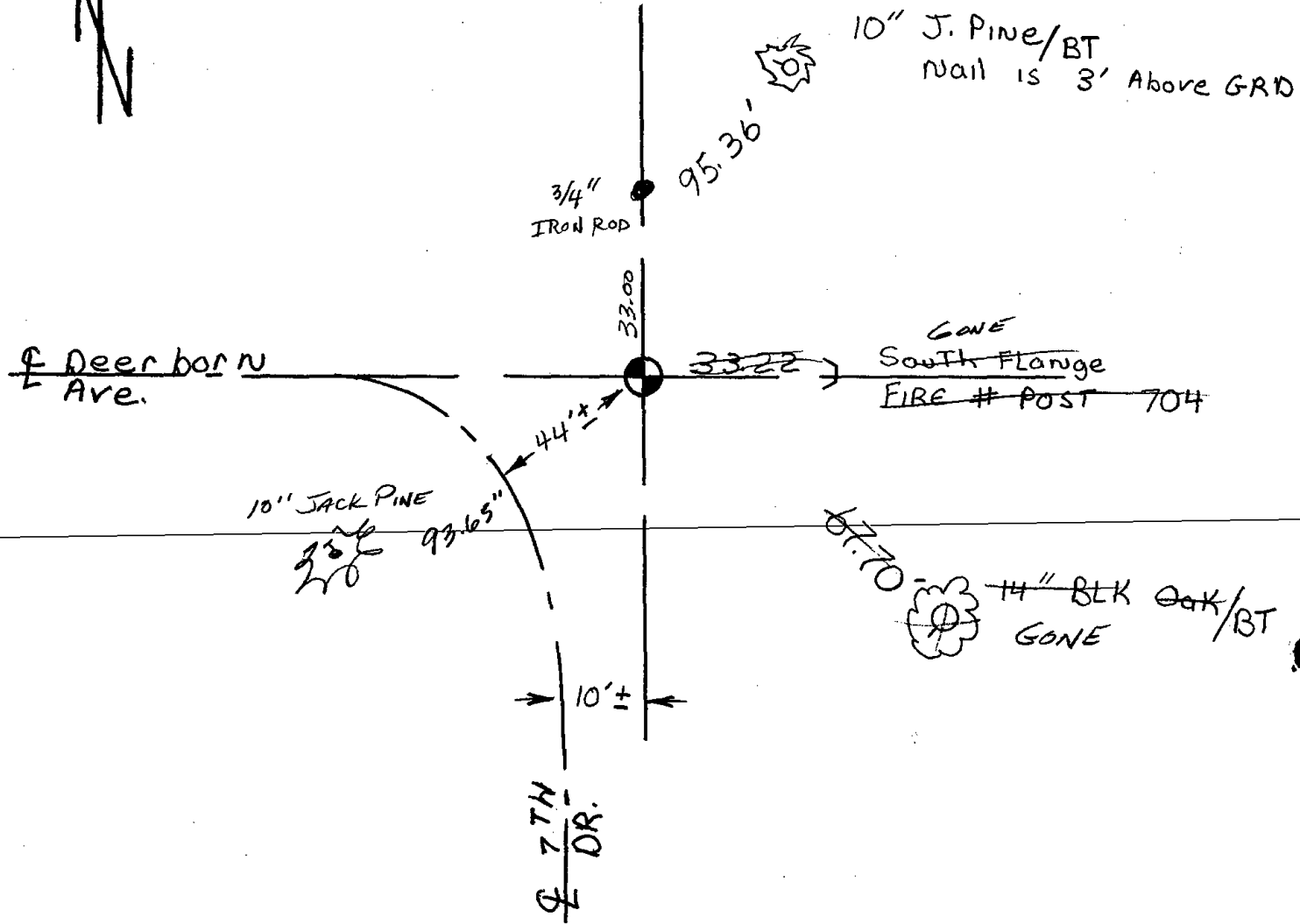
Dr. Roy B. Keck
Registered Land Surveyor

DATE: June 14, 1974

TIE SKETCH Ties are to nail and disc.

(Show at least four ties)





COR OK 7-12-85 DK-SS

ALL OK 7-29-94 - JG-B5

1-GONE, 1-NEW TIE, 2-10-00, JG-BZ

1-GONE, 3-LEFT, 1-24-05-JG

TIES OK 2-4-10 SS