

07 SECTION 17 TOWN 06 RANGE

ADAMS COUNTY

COUNTY CORNER NO: 42
 ROMPORTOL ID: 41706070020

PUBLIC LAND SURVEY MONUMENT RECORD

TYPE OF MONUMENT: HARRISON
 ADAMS COUNTY COORDINATES, NAD 83 (2007)

N. 213499.048

E. 528419.023

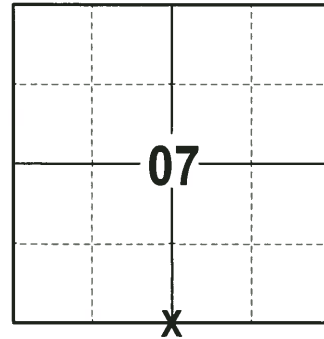
ELEVATION- DATUM

FIELD WORK DATE: 06/20/2017

BASIS FOR MONUMENT LOCATION

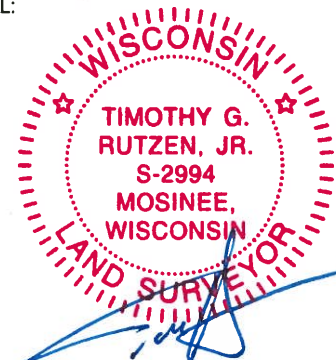
1977- PLS 1274 SEARCHED THROUGH ALL OF ADAMS COUNTY SURVEY RECORDS, FOUND NOTES FROM M.C SMITH DATED JULY 1919. THESE NOTES SHOWED 2 BEARING TREES AT THE CORNER. FIELD NOTES SHOWED THAT HE SURVEYED THE SOUTH HALF OF THE NE 1/4 OF SECTION 18 AS SHERMANS ADDITION TO THE CITY OF ADAMS. FOUND EVIDENCE OF THE C1/4 CORNER AND THE NORTHWEST CORNER OF THE SOUTH HALF OF SECTION 18. RAN AN EXTENSION TRAVERSE OF SECTION 18. BOTH THE NORTHWEST AND THE NORTHEAST CORNER OF THIS SECTION WERE ESTABLISHED FROM THE TRAVERSE. COMPUTED THE LOCATION OF THE CORNER BY USING 2 METHODS. SEARCHED THE AREA AND FOUND NO EVIDENCE OF THE BEARING TREES, THE AREA HAD BEEN BURNED OFF. ESTABLISHED CORNER BY M.C SMITH'S PLAT OF SHERMANS SUBDIVISION TO THE CITY OF ADAMS AND CHECKING WITH THE NW & NE CORNERS OF SECTION 18. SET HARRISON MONUMENT AND TIED OFF.

2017 - PLS 2994 FOUND HARRISON MONUMENT FLUSH WITH THE SURFACE AND 1 WITNESS. THE MONUMENT AGREES WITH THE EXISTING WITNESS. ACCEPTED HARRISON AS CORNER LOCATION, SET 4 NEW TIES AND RE-MEASURED TO EXISTING WITNESS.



LOCATION
 (INDICATE CORNER BY "X")

SEAL:



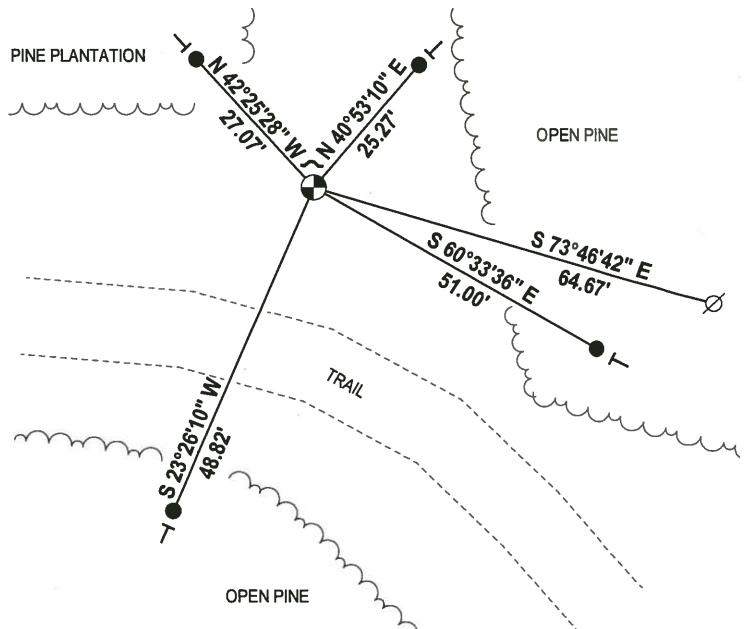
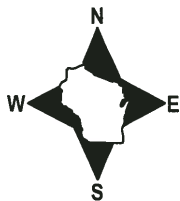
DATA SHOWN HERE ON THIS TIE SHEET IS CORRECT AND COMPLETE TO THE BEST OF MY KNOWLEDGE AND BELIEF.

PROFESSIONAL LAND SURVEYOR

DATE 6/26/17

- TIE SKETCH -

NOTE: THE CORNER FALLS 28± NORTH OF THE CENTERLINE OF THE TRAIL.



- 3/4" x 18" IRON REBAR SET, 1.50#/FT
- ⊕ HARRISON FOUND
- ⊗ WITNESS POWER POLE FOUND
- ~ STEEL FENCE POST
- VINYL "T" POST

ADAMS COUNTY

Survey Monument Record

TYPE OF MONUMENT: HARRISON MONUMENT - STANDARD 1/4 CORNER

STATE PLANE COORDINATES: N _____

E _____

ELEVATION - M.S.L. DATUM: _____

THETA ANGLE: _____

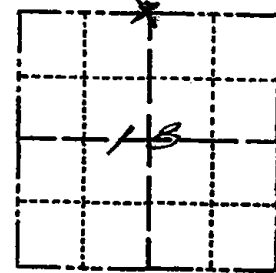
FIELD BOOK: 565 PAGE 29

CORNER NO. 42

SECTION 18

TOWN 17N

RANGE 6E



LOCATION (Indicated by 'X')

SEAL:

BASIS FOR MONUMENT LOCATION

(Use reverse side if necessary)

Show info such as: History of corner, with reference to Vol. and pg, dates, surveyor; exact description of monument replaced; if location computed, by taped or EDM traverse; landowner remarks, etc.

I MADE A THOROUGH SEARCH OF ALL ADAMS COUNTY SURVEY RECORDS. FOUND NOTES FROM M.C. SMITH DATED JULY 1919 SHOWING A SECTION COMPOSITE OF SECTION 18 WITH (2) BEARING TREE TIES LISTED AT THIS CORNER. I ALSO FOUND EVIDENCE IN HIS FIELD NOTES WHERE HE HAD SURVEYED THE SOUTH ONE-HALF OF THE N.E. 1/4 OF SAID SECTION 18 AS SHERMAN'S ADDITION TO THE CITY OF ADAMS. I FOUND FIELD EVIDENCE OF THE 1/4 CORNER AND NORTH WEST CORNER OF THE SOUTH ONE-HALF OF SAID SECTION 18. I MADE AN EXTENSIVE E.D.M. TRAVERSE OF SECTION 18. BOTH THE NORTH-WEST CORNER AND THE NORTH-EAST CORNER OF THIS SECTION WERE ESTABLISHED. FROM THE E.D.M. TRAVERSE I COMPUTED THE LOCATION OF THIS CORNER BY TWO METHODS. (REVERSE SIDE)

CERTIFIED CORRECT:

John A. Breneman
Registered Land Surveyor

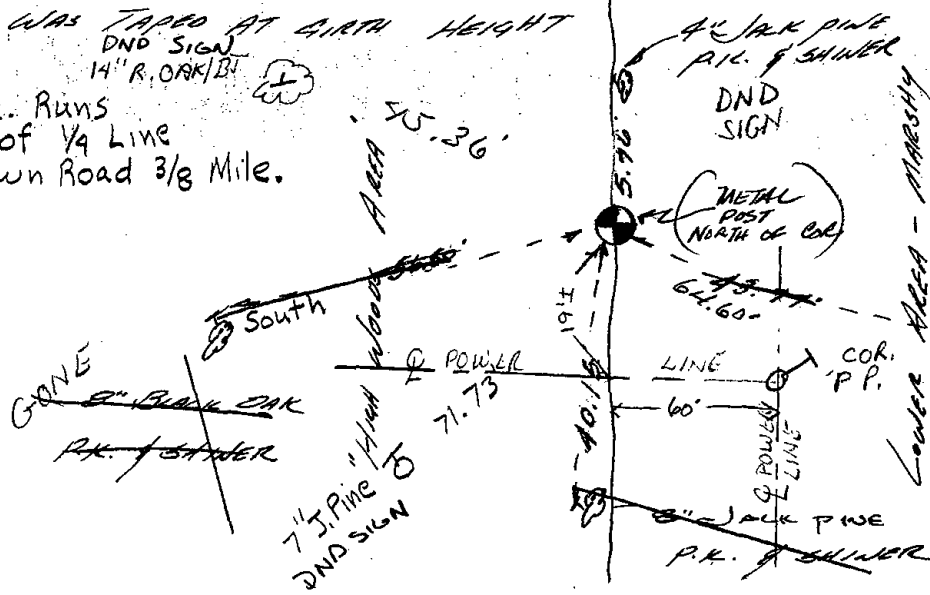
DATE: Nov. 1 1977

TIE SKETCH

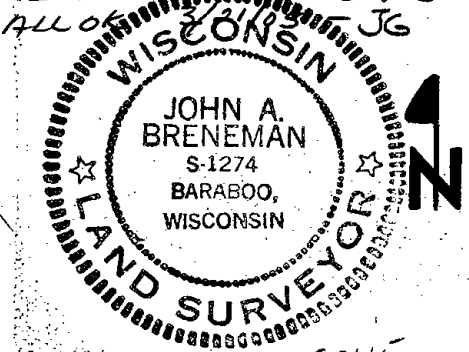
1-GONE, 1-NEW, 2-10-00 JC-RSD

(Show at least four ties)

NOTE: THE DIAMETER OF ALL TREES WAS TAPED AT GIRTH HEIGHT DND SIGN 14" R. OAK/BL. NOTE: P.L. RUNS 40' East of 1/4 Line From Town Road 3/8 Mile.



OK 2-6-90 KZ-CR
ALL OR 7-29-94 JG-BB
ALL OR 3-11-95 JG



GONE
5" WHITE OAK
P.L. SHERNER
POWER LINE HAS TRAIL UNDER LINES

I FIRST COMPUTED THE LOCATION BY SINGLE PROPORTIONALMENT
MEASURE AND SEARCH FOR BEARING TREE EVIDENCE. I FOUND
NO STANDING OAKS OR STUMPS WITH DIAMETERS LARGE ENOUGH FOR
BEARING TREES. I ALSO NOTED THAT THE AREA HAD BEEN
BURNED OFF. I THEN ESTABLISHED THE LOCATION OF THIS
CORNER BY USE OF M.C. SMITH'S PLAT OF SHERMAN'S
SUBDIVISION TO THE CITY OF ADAMS. I USED AND MONUMENTED
THE LOCATION AS I BASED IT FROM M.C. SMITH'S PLAT
AND FIELD WORK ON (SHERMAN'S SUBDIVISION). THIS LOCATION
ALSO FIT BETTER WITH THE PREVIOUSLY ESTABLISHED
N.W. & N.E. CORNERS OF SAID SECTION 18. I ALSO FOUND
NO BEARING TREE EVIDENCE AT ESTABLISHED POSITION FROM
M.C. SMITH'S PLAT BUT MONUMENTED REGARDLESS.