

U.S. PUBLIC LAND SURVEY MONUMENT RECORD

ADAMS COUNTY



Land Surveying
Landscape Architecture
Engineering
Jordan G. Brost, PLS #3009
4941 Kirschling Court
Stevens Point, WI 54481
715.344.9999 (Ph) 715.344.9922 (Fax)

This record shall show the location of the corner and shall include all of the following nine elements (a through i)

TYPE OF MONUMENT: BERNTSEN SURVEY MARKER NAIL

ADAMS COUNTY COORDINATES: N: 213513.525

E: 541604.104

ELEVATION: -M.S.L. DATUM _____

ELLIP. HEIGHT: _____

LATITUDE: _____

LONGITUDE: _____

- FOUND
- SET
- RE-SET
- RE-TIED

ORDER OF ACCURACY:

- FIRST _____
- SECOND _____
- THIRD
- FOURTH _____
- UNKNOWN _____
- OTHER _____

REFERENCE DATUM: NAD 83 (2011)

(a) Identify the corner by reference to the U.S. public land survey system.

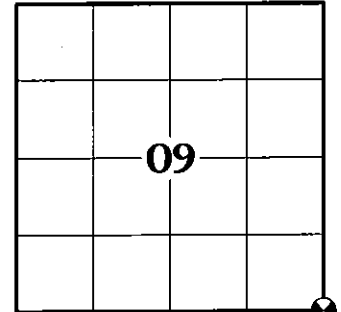
CORNER NO. 47

ROMPORTOL ID: 41706090000

SECTION 09

TOWNSHIP 17 NORTH

RANGE 06 EAST



SECTION IDENTIFICATION

(b) Describe any record evidence, monument evidence, occupational evidence, testimonial evidence, or any other material evidence considered by the professional land surveyor, and whether the monument was found or placed

ANTHONY B. KIEDROWSKI, PLS 878 DUG AND FOUND A CEMENT CORNER SET BY M.C. SMITH SEPT. 15, 1922 COUNTY SURVEYOR RECORD VOL 2 PAGE 107. HE SET A HARRISON MONUMENT AT THE SAME CORNER LOCATION AND TIED OUT. PER PREVIOUS TIE SHEET DATED JULY 7, 1973.

TIMOTHY G. RUTZEN, JR, PLS 2994 FOUND A HARRISON MONUMENT 6" BELOW THE ROAD SURFACE. FOUND NO EVIDENCE OF ANY OF THE EXISTING TIES OR WITNESSES. ACCEPTED THE HARRISON MONUMENT AS THE BEST EVIDENCE OF THE CORNER LOCATION. SET 4 NEW TIES AND MEASURED TO THE TIES. PER PREVIOUS TIE SHEET DATED AUGUST 30, 2018.

ON AUGUST 27, 2021, I FOUND A HARRISON MONUMENT AT THE CORNER LOCATION AND FOUR EXISTING WITNESS MONUMENTS AS SHOWN ON PREVIOUS TIE SHEET DATED AUGUST 30, 2018. EXISTING MONUMENT CHECKED WELL WITH WITNESS MONUMENTS AND WAS ACCEPTED AS THE CORNER LOCATION. MONUMENT AND WITNESSES WERE TIED BEFORE RECONSTRUCTION OF COUNTY HWY "M".

ON NOVEMBER 3, 2021, AFTER CONSTRUCTION WAS COMPLETE, I SET A BERNTSEN SURVEY NAIL IN ASPHALT AT THE PREVIOUS SURVEYED LOCATION AND VERIFIED ALL WITNESS MONUMENTS AS PREVIOUSLY FOUND, WHICH WERE IN GOOD CONDITION.

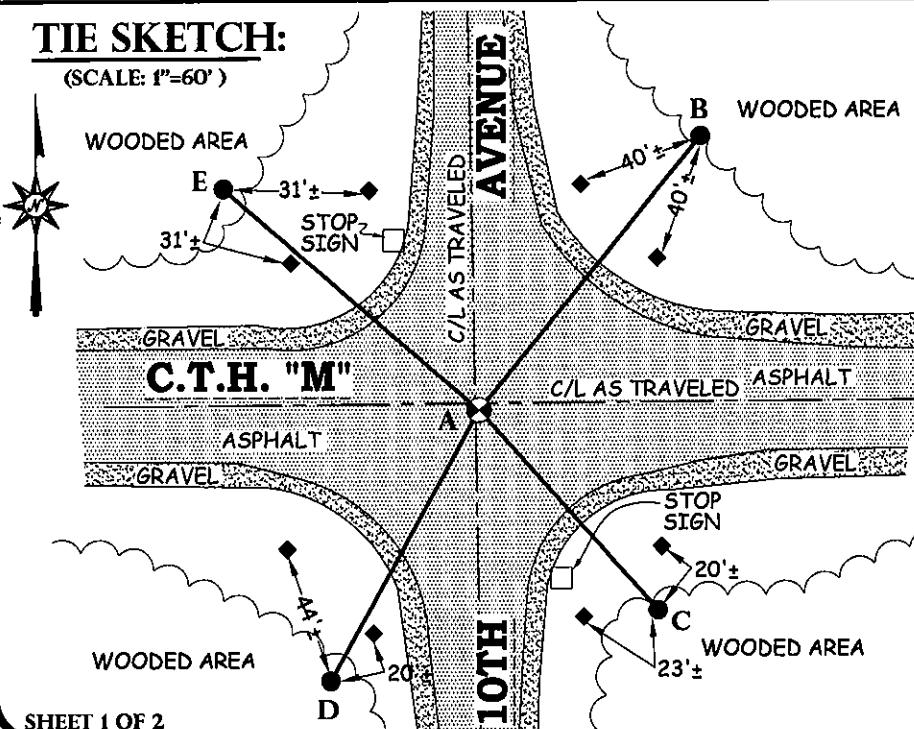
(c) In the plan view drawing below, provide reference ties to at least 4 witness monuments. Witness monuments shall be concrete, natural stone, iron, bearing trees or other equally durable material, except wood other than bearing trees.

(d) Show a plan view drawing depicting the relevant monuments and reference ties which is sufficient in detail to enable accurate relocation of the corner monument if the corner monument is disturbed.

DRAFTED BY JORDAN G. BROST
DRAWN BY TRAVIS PLANTICO

TIE SKETCH:

(SCALE: 1"=60')



LEGEND AND NOTES:

- SET BERNTSEN SURVEY MARKER NAIL
- 3/4" IRON BAR FOUND
- PLASTIC R/W POST

A-B	(N 38°50'27" E)	(109.85')
	N 38°49'27"E	109.95'
A-C	(S 41°50'21" E)	(83.96')
	S 41°46'26"E	84.06'
A-D	(S 28°27'07" W)	(96.67')
	S 28°27'05"W	96.62'
A-E	(N 49°03'27" W)	(105.77')
	N 48°59'38"W	105.90'

COORDINATES ARE REFERENCED TO THE ADAMS COUNTY COORDINATE SYSTEM AS DEVELOPED BY THE WISCONSIN DEPARTMENT OF TRANSPORTATION.

U.S. PUBLIC LAND SURVEY MONUMENT RECORD
ADAMS COUNTY



Land Surveying
Landscape Architecture
Engineering
Jordan G. Brost, PLS #3009
4941 Kirschling Court
Stevens Point, WI 54481
715.344.9999(Ph) 715.344.9922(Fx)

(e) A description of any material discrepancy between the location of the corner monument as restored and the monument location of that corner as previously established.

(a) Identify the corner by reference to the U.S. public land survey system.

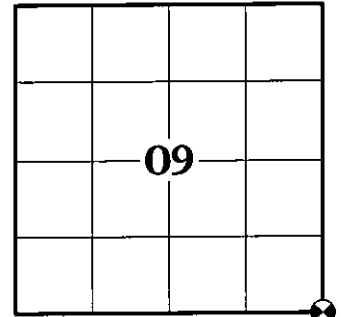
CORNER NO. 47
ROMPORTOL ID: 41706090000
SECTION 09
TOWNSHIP 17 NORTH
RANGE 06 EAST

(f) Was the corner restored through acceptance of (1) an obliterated evidence location, or (2) a found perpetuated location.

FOUND PERPETUATED LOCATION

(g & h) Was the corner reestablished through lost corner proportionate methods? If so, show the method, including the directions and distances to other public land survey corners used as evidence or used for proportioning in determining the corner location.

NO



SECTION IDENTIFICATION

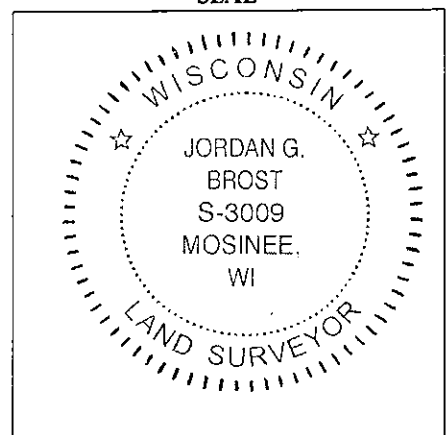
(i) I, Jordan G. Brost, hereby certify that the corner location shown on this record was determined by me or under my direction and control and that this U.S. Public Land Survey Monument Record is correct and complete to the best of my knowledge and belief.

Jordan G. Brost, PLS # 3009

Nov. 18, 2021

Date

SEAL



PUBLIC LAND SURVEY MONUMENT RECORD

TYPE OF MONUMENT: HARRISON
 ADAMS COUNTY COORDINATES, NAD 83 (2007)

N. 213513.548

E. 541604.113

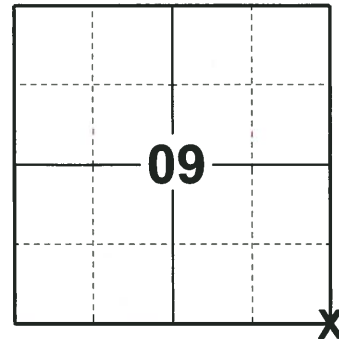
ELEVATION- DATUM

FIELD WORK DATE: 08/07/2018

BASIS FOR MONUMENT LOCATION

1973 - PLS 878 EXCAVATED WITH A BACKHOE AND FOUND A CEMENT CORNER SET BY M.C. SMITH SEPT. 15, 1922. SET A HARRISON THE SAME AT THE CORNER LOCATION AND TIED OUT.

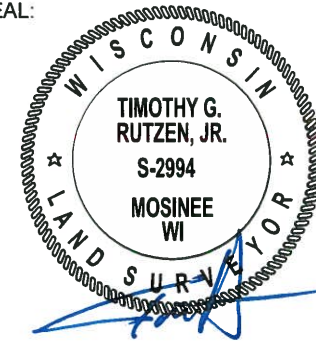
2018 - PLS 2994 FOUND A HARRISON MONUMENT 6" BELOW THE ROAD SURFACE. FOUND NO EVIDENCE OF ANY OF THE EXISTING TIES OR WITNESSES. ACCEPTED THE HARRISON MONUMENT AS THE BEST EVIDENCE OF THE CORNER LOCATION. SET 4 NEW TIES AND MEASURED TO THE TIES.



LOCATION

(INDICATE CORNER BY "X")

SEAL:



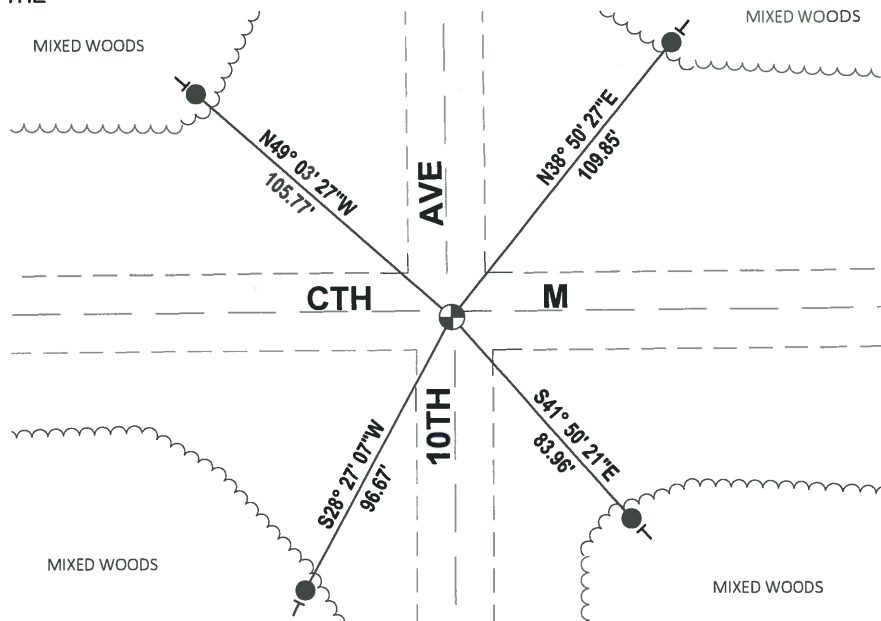
DATA SHOWN HERE ON THIS TIE SHEET IS CORRECT AND COMPLETE TO THE BEST OF MY KNOWLEDGE AND BELIEF.

PROFESSIONAL LAND SURVEYOR

DATE 8-30-18

- TIE SKETCH

NOTE: THE CORNER FALLS 2± SOUTH OF THE CENTERLINE OF CTH M AND 0.5± EAST OF THE CENTERLINE OF 10TH AVE.



- SET 3/4" x 18" IRON REBAR, 1.50#/FT
- ⊕ FOUND HARRISON MONUMENT
- ⊖ VINYL "T" POST

ADAMS COUNTY

Survey Monument Record

TYPE OF MONUMENT: HARRISON

STATE PLANE COORDINATES: N _____

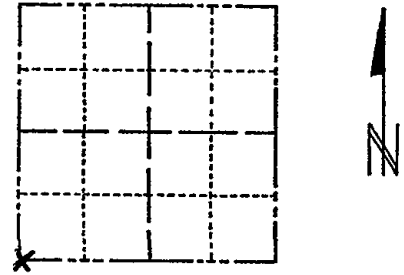
E _____

ELEVATION — M.S.L. DATUM: _____

THETA ANGLE: _____

FIELD BOOK: 108 PAGE 122

CORNER NO. 328
SECTION 10
TOWN 17
RANGE 6



LOCATION
(Indicated by 'X')

SEAL:



BASIS FOR MONUMENT LOCATION

(Use reverse side if necessary)

Show info such as: History of corner, with reference to Vol. and pg, dates, surveyor; exact description of monument replaced; if location computed, by taped or EDM traverse; landowner remarks, etc.

SIGN GONE OTHERS OK 1-31-90 KZ-GR

COROK 7-12-85 SS-DK

COR. O.K. 10-18-75 DM-SS
" " 3/6/80 RM-SS

ABK Dug and Found CEMENT CORNER

SET by M.C. SMITH SEPT. 15, 1922

COUNTY SURVEYOR RECORD Vol 2 Page 107

CERTIFIED CORRECT:

Anthony B. Kiedrowski
Registered Land Surveyor

DATE: 7/79

TIE SKETCH

1-GONE 2-NEW 7-29-94 JG-BS
1-GONE, 4-TIES LEFT, 2°40-00, 56-82
OK, 1-28-05-JG

3 NEW TIES 04-05-10 SS

(Show at least four ties)

