

U.S. PUBLIC LAND SURVEY MONUMENT RECORD

ADAMS COUNTY



Point of Beginning

Land Surveying
Landscape Architecture
Engineering
Jordan G. Brost, PLS #3009
4941 Kirschling Court
Stevens Point, WI 54481
715.344.9999(Ph) 715.344.9922(Fx)

This record shall show the location of the corner and shall include all of the following nine elements (a through i)

TYPE OF MONUMENT: BERNTSEN SURVEY MARKER NAIL

ADAMS COUNTY COORDINATES: N: 213562.859

E: 544236.221

ELEVATION: -M.S.L. DATUM _____

ELLIP. HEIGHT: _____

LATITUDE: _____

LONGITUDE: _____

- FOUND
- SET
- RE-SET
- RE-TIED

ORDER OF ACCURACY:

- FIRST _____
- SECOND _____
- THIRD X
- FOURTH _____
- UNKNOWN _____
- OTHER _____

REFERENCE DATUM: NAD 83 (2011)

(a) Identify the corner by reference to the U.S. public land survey system.

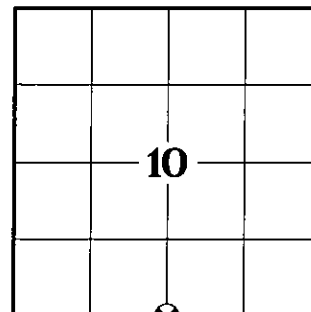
CORNER NO. 48

ROMPORTOL ID: 41706100020

SECTION 10

TOWNSHIP 17 NORTH

RANGE 06 EAST



SECTION IDENTIFICATION

(b) Describe any record evidence, monument evidence, occupational evidence, testimonial evidence, or any other material evidence considered by the professional land surveyor, and whether the monument was found or placed

GREGORY P. RHINEHART, PLS 1478 SET HARRISON MONUMENT EQUIDISTANT AND ON LINE BETWEEN ADJACENT SECTION CORNERS AFTER RUNNING A T2/EDM TRAVERSE OF SECTION 10. EXCAVATION WAS NOT ATTEMPTED AT THIS LOCATION DUE TO THE LACK OF CONCLUSIVE COLLATERAL EVIDENCE AND RESURVEY INFORMATION. PER PREVIOUS TIE SHEET DATED JULY 26, 1979.

TIMOTHY G. RUTZEN, JR, PLS 2994 FOUND A HARRISON MONUMENT 4" BELOW THE ROAD SURFACE AND 1 TIE. THE MONUMENT AGREES WITH THE EXISTING TIE. ACCEPTED THE HARRISON MONUMENT AS THE CORNER LOCATION. SET 3 NEW TIES AND MEASURED TO THE TIES. PER PREVIOUS TIE SHEET DATED AUGUST 30, 2018.

ON AUGUST 27, 2021, I FOUND A HARRISON MONUMENT AT THE CORNER LOCATION AND THREE EXISTING WITNESS MONUMENTS AS SHOWN ON PREVIOUS TIE SHEET DATED AUGUST 30, 2018. EXISTING MONUMENT CHECKED WELL WITH WITNESS MONUMENTS AND WAS ACCEPTED AS THE CORNER LOCATION. MONUMENT AND WITNESSES WERE TIED BEFORE RECONSTRUCTION OF COUNTY HWY "M".

ON NOVEMBER 3, 2021, AFTER CONSTRUCTION WAS COMPLETE, I SET A BERNTSEN SURVEY NAIL IN ASPHALT AT THE PREVIOUS SURVEYED LOCATION AND VERIFIED THREE WITNESS MONUMENTS AS PREVIOUSLY FOUND, WHICH WERE IN GOOD CONDITION AND FOUND AN EXISTING 3/4" IRON BAR SOUTH OF SECTION CORNER AND USED AS WITNESS MONUMENT AS SHOWN IN THE BELOW SKETCH.

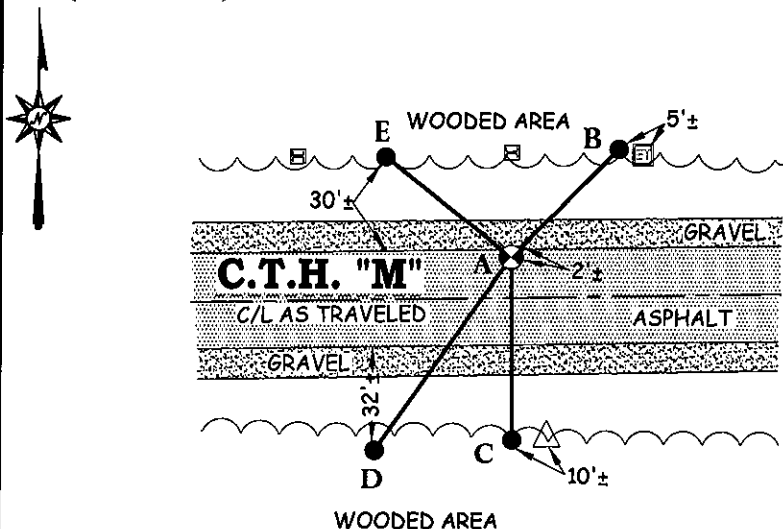
(c) In the plan view drawing below, provide reference ties to at least 4 witness monuments. Witness monuments shall be concrete, natural stone, iron, bearing trees or other equally durable material, except wood other than bearing trees.

(d) Show a plan view drawing depicting the relevant monuments and reference ties which is sufficient in detail to enable accurate relocation of the corner monument if the corner monument is disturbed.

DRAFTED BY JORDAN G. BROST
DRAWN BY TRAVIS PLANTICO

TIE SKETCH:

(SCALE: 1"=60')



LEGEND AND NOTES:

- ⊗ SET BERNTSEN SURVEY MARKER NAIL
- 3/4" IRON BAR FOUND
- △ TELEPHONE PEDESTAL
- ⊞ ELECTRIC TRANSFORMER
- ⊞ R/W CHANNEL

A-B	(N 44°38'05" E)	(47.59')
	N 44°49'52" E	47.48'
A-C	S 00°37'48" E	57.57'
A-D	(S 34°52'20" W)	(73.93')
	S 34°48'28" W	74.10'
A-E	(N 51°20'30" W)	(50.37')
	N 51°24'19" W	50.23'

COORDINATES ARE REFERENCED TO THE ADAMS COUNTY COORDINATE SYSTEM AS DEVELOPED BY THE WISCONSIN DEPARTMENT OF TRANSPORTATION.

U.S. PUBLIC LAND SURVEY MONUMENT RECORD
ADAMS COUNTY



Land Surveying
Landscape Architecture
Engineering
Jordan G. Brost, PLS #3009
4941 Kirschling Court
Stevens Point, WI 54481
715.344.9999(Ph) 715.344.9922(Fx)

(e) A description of any material discrepancy between the location of the corner monument as restored and the monument location of that corner as previously established.

(a) Identify the corner by reference to the U.S. public land survey system.

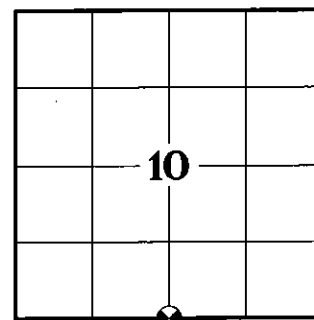
CORNER NO. 48
ROMPORTOL ID: 41706100020
SECTION 10
TOWNSHIP 17 NORTH
RANGE 06 EAST

(f) Was the corner restored through acceptance of (1) an obliterated evidence location, or (2) a found perpetuated location.

FOUND PERPETUATED LOCATION

(g & h) Was the corner reestablished through lost corner proportionate methods? If so, show the method, including the directions and distances to other public land survey corners used as evidence or used for proportioning in determining the corner location.

NO



SECTION IDENTIFICATION

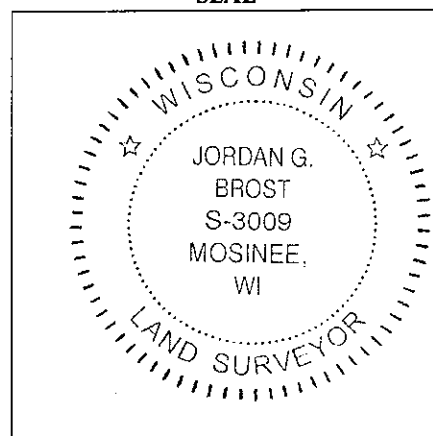
(i) I, *Jordan G. Brost*, hereby certify that the corner location shown on this record was determined by me or under my direction and control and that this U.S. Public Land Survey Monument Record is correct and complete to the best of my knowledge and belief.

Jordan G. Brost, PLS # 3009

Nov. 18, 2021

Date

SEAL



10
SECTION

17
TOWN

06
RANGE

ADAMS COUNTY

COUNTY CORNER NO: 48
ROMPORTOL ID: 41706100020

PUBLIC LAND SURVEY MONUMENT RECORD

TYPE OF MONUMENT: HARRISON
ADAMS COUNTY COORDINATES, NAD 83 (2007)

N. 213562.765

E. 544236.223

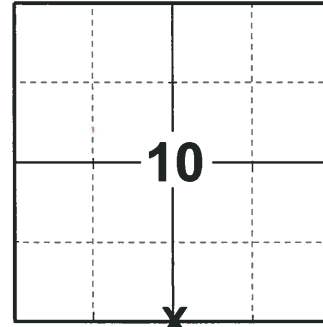
ELEVATION- DATUM

FIELD WORK DATE: 08/07/2018

BASIS FOR MONUMENT LOCATION

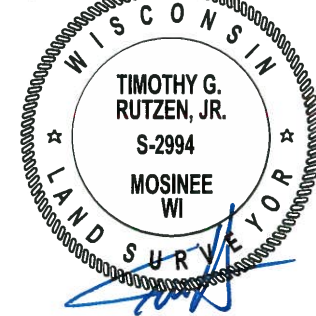
1979 - PLS 1478 CALCULATED A POSITION EQUIDISTANT AND ON LINE BETWEEN ADJACENT SECTION CORNERS AFTER RUNNING A T2/EDM TRAVERSE OF SECTION 10. EXCAVATION WAS NOT ATTEMPTED AT THIS LOCATION DUE TO THE LACK OF CONCLUSIVE COLLATERAL EVIDENCE AND RESURVEY INFORMATION. SET A HARRISON AT THE CALCULATED POSITION AND TIED OUT.

2018 - PLS 2994 FOUND A HARRISON MONUMENT 4" BELOW THE ROAD SURFACE AND 1 TIE. THE MONUMENT AGREES WITH THE EXISTING TIE. ACCEPTED THE HARRISON MONUMENT AS THE CORNER LOCATION. SET 3 NEW TIES AND MEASURED TO THE TIES.



LOCATION
(INDICATE CORNER BY "X")

SEAL:



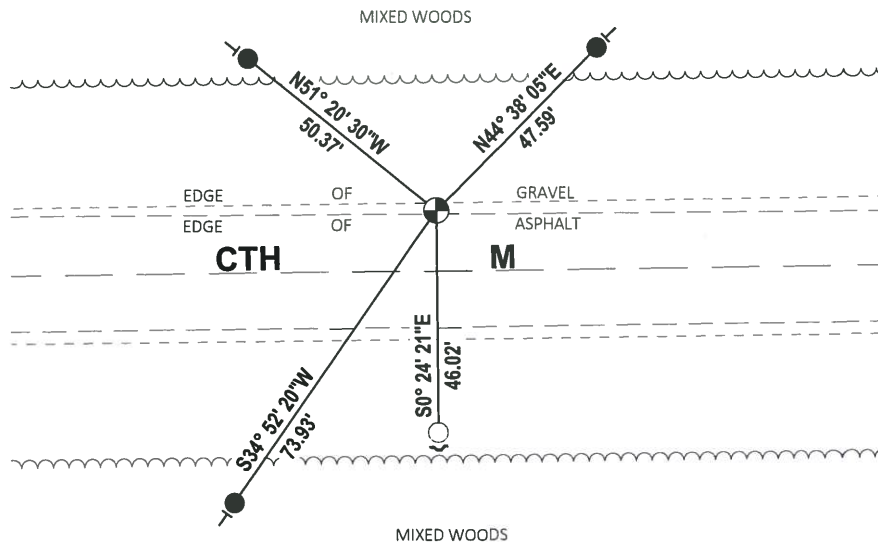
DATA SHOWN HERE ON THIS TIE SHEET IS CORRECT AND COMPLETE TO THE BEST OF MY KNOWLEDGE AND BELIEF.

PROFESSIONAL LAND SURVEYOR

DATE 8-30-18

TIE SKETCH

NOTE: THE CORNER FALLS 13'± NORTH OF THE CENTERLINE OF CTH M.

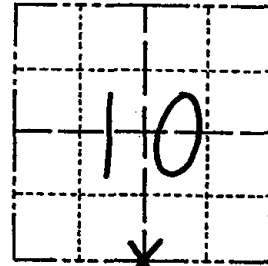


- SET 3/4" x 18" IRON REBAR, 1.50#/FT
- FOUND 3/4" IRON ROD
- ⊙ FOUND HARRISON MONUMENT
- ↗ STEEL FENCE POST
- ← VINYL "T" POST

Government Land Corner Certificate

ADAMS County
 TYPE OF MONUMENT: HARRISON
 STATE PLANE COORDINATES: N _____
 E _____
 ELEVATION — M.S.L. DATUM: _____
 THETA ANGLE: _____
 FIELD BOOK: 54 PAGE 60
 DRAWN BY: B. SULLIVAN

CORNER NO. 48
 SECTION 10
 TOWN 17
 RANGE 6



LOCATION
 (Indicated by 'X')

BASIS FOR MONUMENT LOCATION

Show info such as: History of corner, with reference to Vol. and pg., dates, surveyor; exact description of monument replaced; if location computed, by taped or EDM traverse; landowner remarks, etc. (Use reverse side if necessary)

Set corner equidistant and on line between adjacent section corners after running a T2/EDM traverse of Section 10. Excavation was not attempted at this location due to the lack of conclusive collateral evidence and resurvey information.

Harrison OK · 2 Ties Gone · 2 New.
 9-16-85 GR

ALL OK 1-30-90 KZ-GR

ALL OK 7-29-94 JG-B5

2-GONE, 2-NEW TIE, 2-10-00, JG-B2

2-10-10 TIES OK SS

SEAL:



DATA SHOWN HERE ON
 CERTIFIED CORRECT:

Gregory P Rhinehart
 Registered Land Surveyor

DATE: 7/26/79

TIE SKETCH

Show at least four ties, also fence lines, roads, topo, size and type of 'witness trees' and if off road - best way to arrive at corner.

