

PUBLIC LAND SURVEY MONUMENT RECORD

TYPE OF MONUMENT: HARRISON
 ADAMS COUNTY COORDINATES, NAD 83 (2007)

N. 213611.579

E. 546868.294

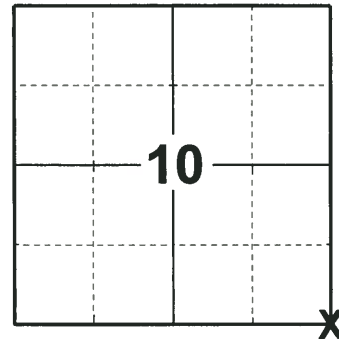
ELEVATION- DATUM

FIELD WORK DATE: 08/07/2018

BASIS FOR MONUMENT LOCATION

1974 - PLS 1103 RETRACED THE SURVEY OF SECTION 11 (IE. SECTION TO NORTH) BY RAY C. CARLSON, S-297, AND RE-ESTABLISHED THE NORTHWEST CORNER OF SECTION 14. SET A HARRISON MONUMENT AND TIED OUT.

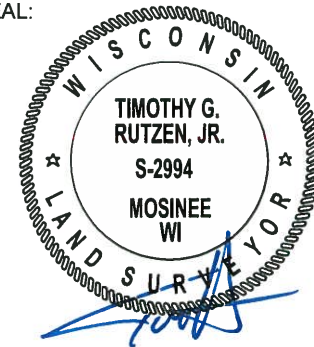
2018 - PLS 2994 FOUND A HARRISON MONUMENT 4" BELOW THE ROAD SURFACE, 1 TIE AND 1 PROPERTY IRON. THE MONUMENT AGREES WITH THE EXISTING TIE. ACCEPTED THE HARRISON MONUMENT AS THE CORNER LOCATION. SET 2 NEW TIES AND MEASURED TO THE TIES AND PROPERTY IRON.



LOCATION

(INDICATE CORNER BY "X")

SEAL:



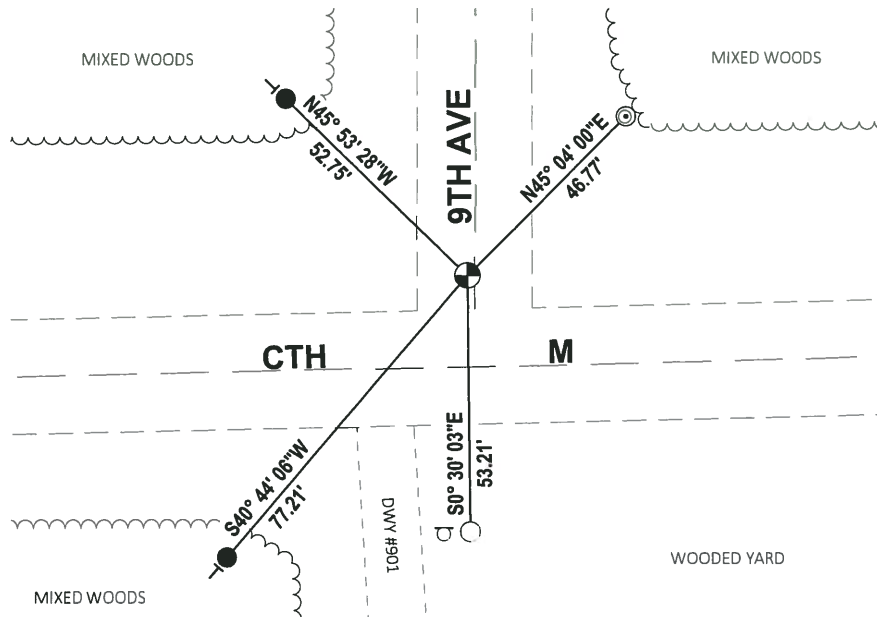
DATA SHOWN HERE ON THIS TIE SHEET IS CORRECT AND COMPLETE TO THE BEST OF MY KNOWLEDGE AND BELIEF.

PROFESSIONAL LAND SURVEYOR

DATE 8-30-18

- TIE SKETCH

NOTE: THE CORNER FALLS 19± NORTH OF THE CENTERLINE OF CTH M AND 1± WEST OF THE CENTERLINE OF 9TH AVE.



- SET 3/4" x 18" IRON REBAR, 1.50#/FT
- FOUND 3/4" IRON ROD
- ⊙ FOUND 2-3/8" O.D. IRON PIPE
- ⊕ FOUND HARRISON MONUMENT
- FIRE #901 SIGN
- VINYL "T" POST

ADAMS COUNTY

Survey Monument Record

TYPE OF MONUMENT: Standard Harrison Monument

STATE PLANE COORDINATES: N _____
E _____

ELEVATION — M.S.L. DATUM: _____

THETA ANGLE: _____

FIELD BOOK: _____ PAGE _____

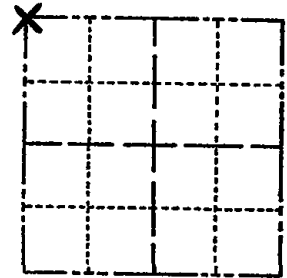
CORNER NO. 494

SECTION 14

TOWN 17

RANGE 6

49



LOCATION
(Indicated by 'X')

SEAL:



BASIS FOR MONUMENT LOCATION

(Use reverse side if necessary)

Show info such as: History of corner, with reference to Vol. and pg, dates, surveyor; exact description of monument replaced; if location computed, by taped or EDM traverse; landowner remarks, etc.

Retraced survey of Section 11 (ie. Section to North) by Ray C. Carlson, S-297, and re-established Northwest corner of Section 14.

CORNER O.K. 9-27-75 SS
" " 3/6/88 SS RM

1 GONE NO NEW DK 7-16-85
ALL OK 1-31-90 KZ-GR

ALL OK 7-29-94 JB-B5

CERTIFIED CORRECT:

Dale C. Hagen
Registered Land Surveyor

DATE: August 19, 1974

TIE SKETCH ALL OK, 2-10-00 JG-B2
1 NEW, 2-4-10 '55

(Show at least four ties)

