

PUBLIC LAND SURVEY MONUMENT RECORD

TYPE OF MONUMENT: HARRISON (BROKEN-TOP)

ADAMS COUNTY COORDINATES, NAD 83 (2007)

N. 213607.116

E. 549504.325

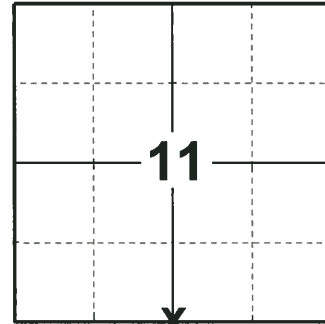
ELEVATION- DATUM

FIELD WORK DATE: 08/07/2018

BASIS FOR MONUMENT LOCATION

1974 - PLS 1103 RAN EDM/TRANSIT TRAVERSE BETWEEN NORTHEAST AND NORTHWEST CORNERS OF SECTION 14. NO EVIDENCE AS TO THE LOCATION OF THE QUARTER CORNER WAS FOUND, THOUGH THERE EXISTS A PIPE AT A FENCE CORNER TOWARD THE NORTH. THERE IS NO EVIDENCE IN THE COUNTY SURVEYOR'S OFFICE AS TO THE ORIGIN OF THIS PIPE. ACCORDING TO SECTION 59.62 OF WISCONSIN STATUTES, THE QUARTER CORNER WAS CALCULATED EQUIDISTANT AND ON LINE BETWEEN THE NORTHEAST AND NORTHWEST SECTION CORNERS. SET A HARRISON MONUMENT AND TIED OUT.

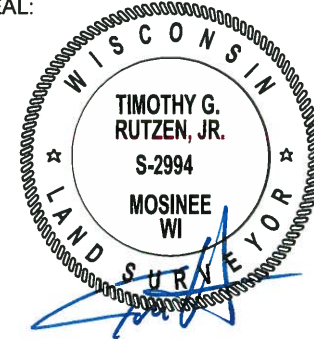
2018 - PLS 2994 FOUND A HARRISON MONUMENT WITH A BROKEN-TOP 4" BELOW THE ROAD SURFACE AND 1 TIE. THE MONUMENT AGREES WITH THE EXISTING TIE. ACCEPTED THE HARRISON MONUMENT WITH A BROKEN-TOP AS THE CORNER LOCATION. SET 3 NEW TIES AND MEASURED TO THE TIES.



LOCATION

(INDICATE CORNER BY "X")

SEAL:



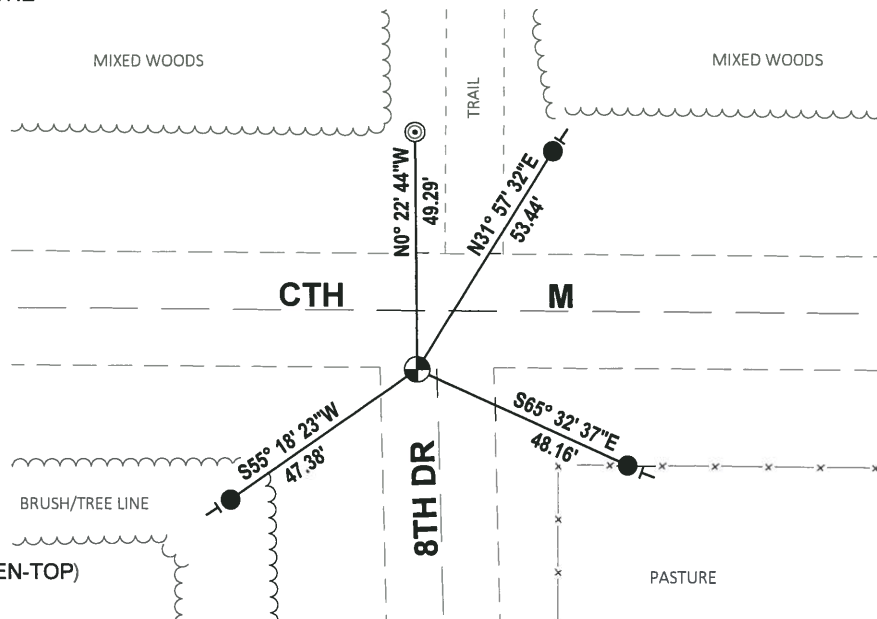
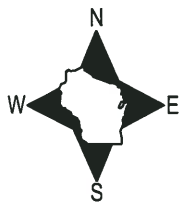
DATA SHOWN HERE ON THIS TIE SHEET IS CORRECT AND COMPLETE TO THE BEST OF MY KNOWLEDGE AND BELIEF.

PROFESSIONAL LAND SURVEYOR

DATE 8-30-18

- TIE SKETCH

NOTE: THE CORNER FALLS 12± SOUTH OF THE CENTERLINE OF CTH M AND 4± WEST OF THE CENTERLINE OF 8TH DR.



- SET 3/4" x 18" IRON REBAR, 1.50#/FT
- ◎ FOUND 2-3/8" O.D. IRON PIPE
- ⊕ FOUND HARRISON MONUMENT (BROKEN-TOP)
- VINYL "T" POST

ADAMS COUNTY

Survey Monument Record

TYPE OF MONUMENT: Standard Harrison Monument

STATE PLANE COORDINATES: N _____

E _____

ELEVATION — M.S.L. DATUM: _____

THETA ANGLE: _____

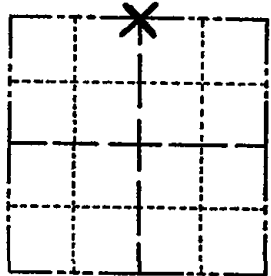
FIELD BOOK: _____ PAGE _____

CORNER NO. 495

SECTION 14

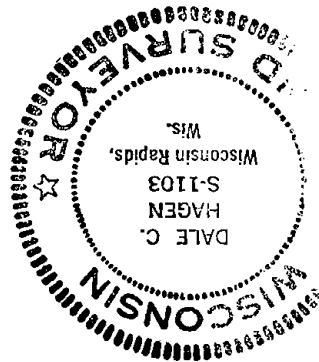
TOWN 17

RANGE 6



LOCATION
(Indicated by 'X')

SEAL:



BASIS FOR MONUMENT LOCATION

(Use reverse side if necessary)

Show info such as: History of corner, with reference to Vol. and pg. dates, surveyor; exact description of monument replaced; if location computed, by taped or EDM traverse; landowner remarks, etc.

Ran EMD/transit traverse between Northeast and Northwest corners of Section 14.

No evidence as to the location of the Quarter corner was found, though there exists a pipe at a fence corner toward the North. There is no evidence in the County Surveyor's office as to the origin of this pipe.

According to Section 59.62 of the Wisconsin Statutes, the Quarter corner was set equidistant and on line between the Northeast and Northwest Section corners.

CERTIFIED CORRECT:

Dale C. Hagen
Registered Land Surveyor

DATE: August 19, 1974

COR. O.K. 9-27-75 SS
 COR. BELPS 3-13-80 RN-SS
 ALL OK 7-16-85 DK

TIE SKETCH

(Show at least four ties)

