

ADAMS COUNTY

Survey Monument Record

TYPE OF MONUMENT: HARRISON Mod. STANDARD 1/4 CORNER

STATE PLANE COORDINATES: N \_\_\_\_\_

E \_\_\_\_\_

ELEVATION — M.S.L. DATUM: \_\_\_\_\_

THETA ANGLE: \_\_\_\_\_

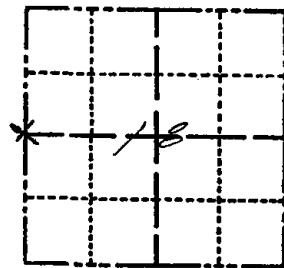
FIELD BOOK: 565 PAGE 28

CORNER NO. 54

SECTION 18

TOWN 17

RANGE 6



LOCATION (Indicated by 'X')



SEAL:

BASIS FOR MONUMENT LOCATION

(Use reverse side if necessary)

Show info such as: History of corner, with reference to Vol. and pg, dates, surveyor; exact description of monument replaced; if location computed, by taped or EDM traverse; landowner remarks, etc.

MADE THOROUGH SEARCH OF ALL ADAMS COUNTY SURVEY RECORDS.  
FOUND SECTION COMPOSITE OF SECTION 18. T17N. R. 6E DRAFTED BY M.C. SMITH IN JULY 1919. THIS SECTION COMPOSITE SHOWED TWO BEARING TAPE REFERENCES. I RAN AN EXTENSIVE E.D.M. TRAVERSE OF SECTION 18. FROM SAID TRAVERSE I COMPUTED THE LOCATION OF CORNER BY SINGLE PROPORTIONAL MEASURE BETWEEN THE ESTABLISHED NW. CORNER AND S.W. CORNER OF SAID SECTION 18. I MADE AN EXTENSIVE SEARCH FOR THE BEARING TAPES AS GIVEN BY M.C. SMITH. I NOTED THAT THE COMPLETE AREA HAD BEEN BURNED OFF AND THAT NO SIZEABLE STUMPS OR TREES OF SPECIES NOTED REMAINED IN FACT. I ESTABLISHED THE LOCATION OF THIS CORNER BY SINGLE PROPORTIONAL MEASURE.

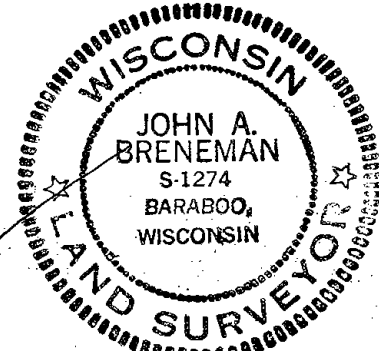
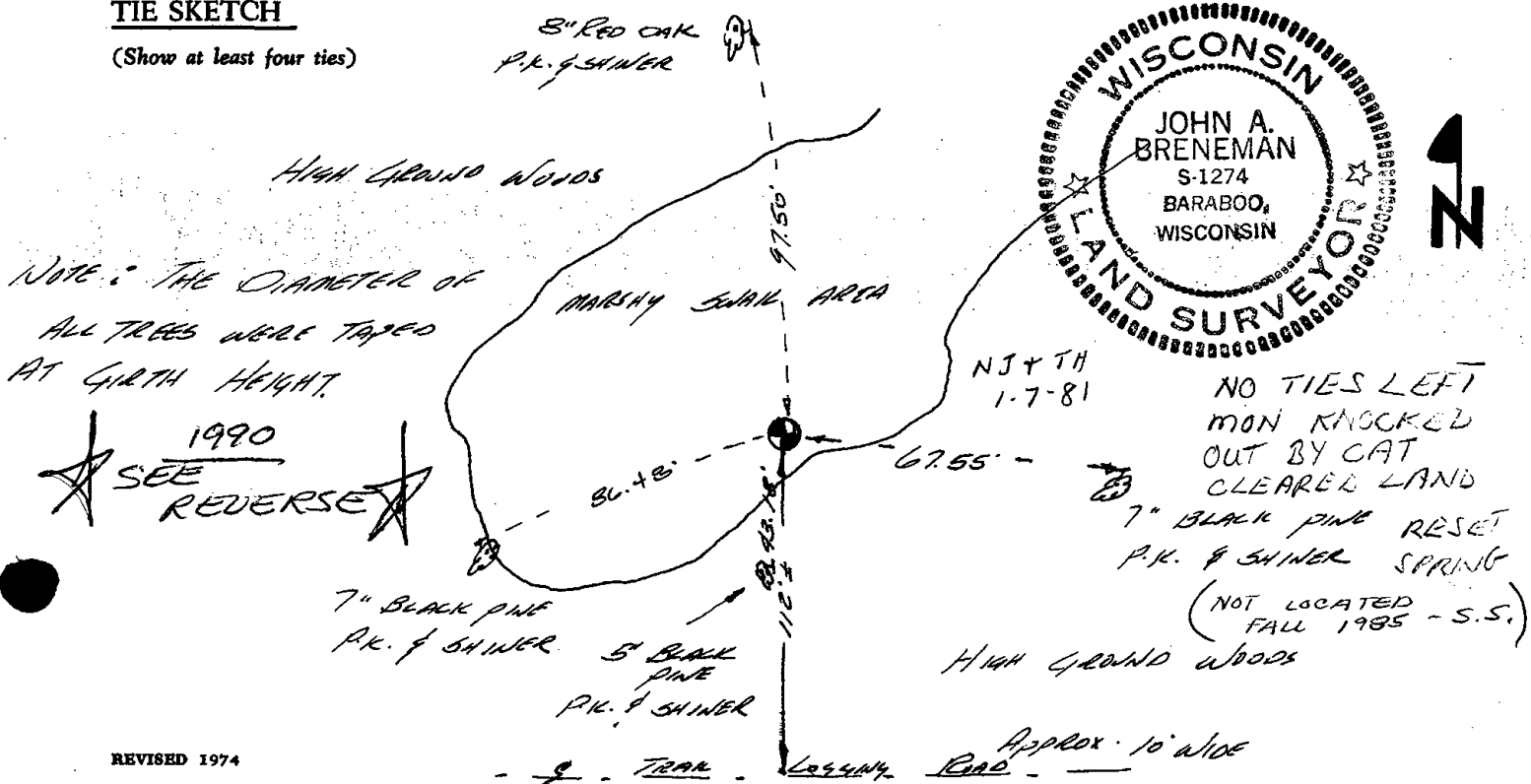
CERTIFIED CORRECT:

John A. Breneman  
Registered Land Surveyor

DATE: November 1, 1977

TIE SKETCH

(Show at least four ties)



No	EVIDENCE	OF	MONUMENT.	7-9-90	JG-SS
"	"	"	"	7-29-94	JG-B5
"	"	"	"	2-10-00	JG-BZ
"	"	"	"	3-21-05	JG

DIMENSIONS ARE FROM CLIPED COMPOSITE

ON FILE, SECTION 18-17-6, COUNTY  
SURVEYOR'S OFFICE, FILED JAN. 1978

⊙ NW COR

