

## PUBLIC LAND SURVEY MONUMENT RECORD

TYPE OF MONUMENT: HARRISON

ADAMS COUNTY COORDINATES, NAD 83 (2007)

N. 210860.433

E. 541618.288

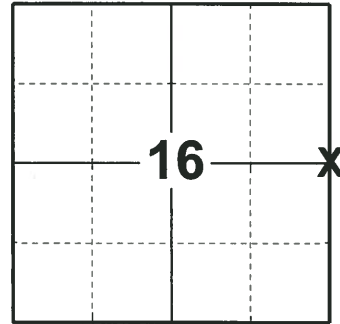
ELEVATION- \_\_\_\_\_ DATUM \_\_\_\_\_

FIELD WORK DATE: 08/14/2018

### BASIS FOR MONUMENT LOCATION

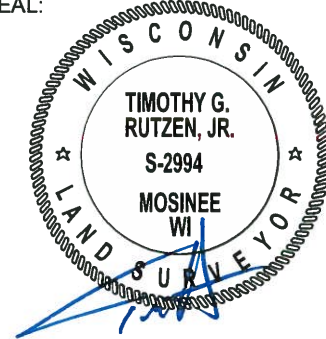
1974 - PLS FOUND THE 2 EXISTING CONCRETE WITNESS MONUMENTS, ONE BEING EASTERLY AND ONE SOUTHWESTERLY, INDICATING THE LOCATION OF THE QUARTER CORNER. EXCAVATION AT THE CORNER LOCATION REVEALED THE EXISTENCE IF A 1-1/2" INCH IRON PIPE. SAID PIPE WAS REPLACED WITH A HARRISON MONUMENT AND TIED OUT.

2018 - PLS 2994 FOUND A HARRISON MONUMENT 6" BELOW THE GROUND SURFACE AND 2 TIES. THE MONUMENT AGREES WITH THE TIE TO THE EAST BUT NOT WITH THE TIE TO THE SOUTHWEST. VERIFIED THE CORNER TO BE NEAR ON LINE AND EQUIDISTANT WITH THE SECTION CORNERS TO THE NORTH AND THE SOUTH. ACCEPTED THE HARRISON MONUMENT AS THE CORNER LOCATION. SET 2 NEW TIES AND MEASURED TO THE TIES.



**LOCATION**  
(INDICATE CORNER BY "X")

SEAL:



DATA SHOWN HERE ON THIS TIE SHEET IS CORRECT AND COMPLETE TO THE BEST OF MY KNOWLEDGE AND BELIEF.

PROFESSIONAL LAND SURVEYOR

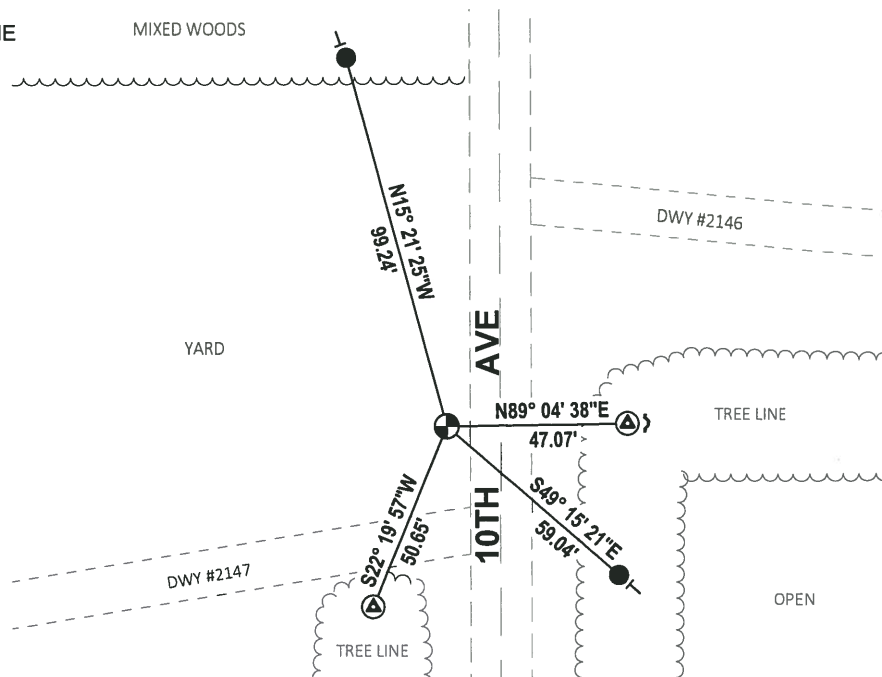
DATE 8-30-18

### - TIE SKETCH

NOTE: THE CORNER FALLS 14'± WEST OF THE CENTERLINE OF 10TH AVE.



- SET 3/4" x 18" IRON REBAR, 1.50#/FT
- ⊙ FOUND 4" CONCRETE MONUMENT
- ⊙ FOUND HARRISON MONUMENT
- ↘ STEEL FENCE POST
- ← VINYL "T" POST



ADAMS COUNTY

Survey Monument Record

TYPE OF MONUMENT: STANDARD HARRISON

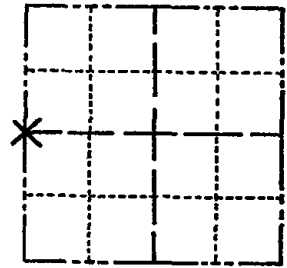
STATE PLANE COORDINATES: N \_\_\_\_\_ E \_\_\_\_\_

ELEVATION — M.S.L. DATUM: \_\_\_\_\_

THETA ANGLE: \_\_\_\_\_

FIELD BOOK: \_\_\_\_\_ PAGE \_\_\_\_\_

CORNER NO. 544  
SECTION 15  
TOWN 17  
RANGE 6



LOCATION (Indicated by 'X')

BASIS FOR MONUMENT LOCATION

(Use reverse side if necessary)

Show info such as: History of corner, with reference to Vol. and pg. dates, surveyor; exact description of monument replaced; if location computed, by taped or EDM traverse; landowner remarks, etc.

SEAL:



Two existing concrete witness monuments were found, one being Easterly and one Southwesterly, indicating the location of the Quarter corner.

Excavation at the location indicated by the witness monuments revealed the existence of a 1 1/2 inch diameter iron pipe. Said pipe was replaced with a Standard Harrison Monument.

CORNER O.K. 1975  
MON. TIES OK 3/6/80 RN-SS  
ALL OK 7-18-85 DK  
ALL OK 6-26-90 JG

CERTIFIED CORRECT:

Dale C. Hagen  
Registered Land Surveyor

DATE: August 19, 1974

TIE SKETCH

ALL OK B-1-94 JG-BS  
ALL OK 2-14-00, JG  
OK, 1-28-05-JG  
" 2-5-10 SS

(Show at least four ties)

