

PUBLIC LAND SURVEY MONUMENT RECORD

TYPE OF MONUMENT: HARRISON (BROKEN-TOP)
ADAMS COUNTY COORDINATES, NAD 83 (2007)

N. 210961.726

E. 552158.373

ELEVATION- DATUM

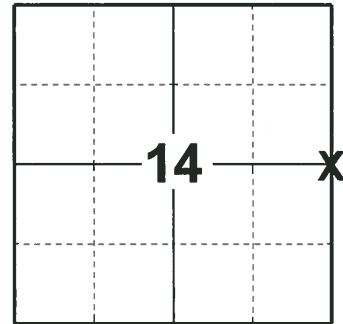
FIELD WORK DATE: 08/17/2018

BASIS FOR MONUMENT LOCATION

1980 - PLS 1167 SEARCHED THE AREA, FOUND NO EVIDENCE OF THE ORIGINAL MONUMENT OR ANY REMONUMENTATION. CALCULATED THE CORNER POSITION MIDWAY ON LINE BETWEEN THE NE CORNER AND THE SE CORNER OF 14-17-6E. SET A HARRISON AT THE CALCULATED CORNER POSITION AND TIED OUT.

1985 - PLS (UNKNOWN) THE TOP 18" OF THE HARRISON IS BROKEN-OFF. THE REMAINDER OF THE MONUMENT WAS UNDISTURBED, 18" BELOW THE SURFACE OF THE GROUND. TIED OUT THE CORNER LOCATION. DID NOT RESET THE MONUMENT AT THE CORNER BECAUSE IT FALLS WITHIN A CULTIVATED FIELD.

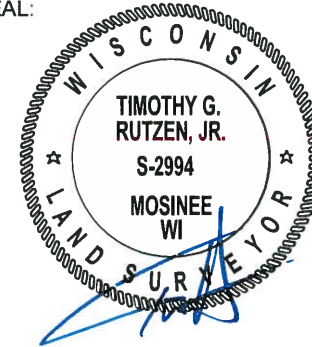
2018 - PLS 2994 FOUND A HARRISON MONUMENT WITH A BROKEN-TOP 18" BELOW THE GROUND SURFACE AND 1 WITNESS. THE MONUMENT AGREES WITH THE EXISTING WITNESS. ACCEPTED THE HARRISON MONUMENT WITH A BROKEN-TOP AS THE CORNER LOCATION. SET 4 NEW TIES AND MEASURED TO THE TIES AND WITNESS.



LOCATION

(INDICATE CORNER BY "X")

SEAL:

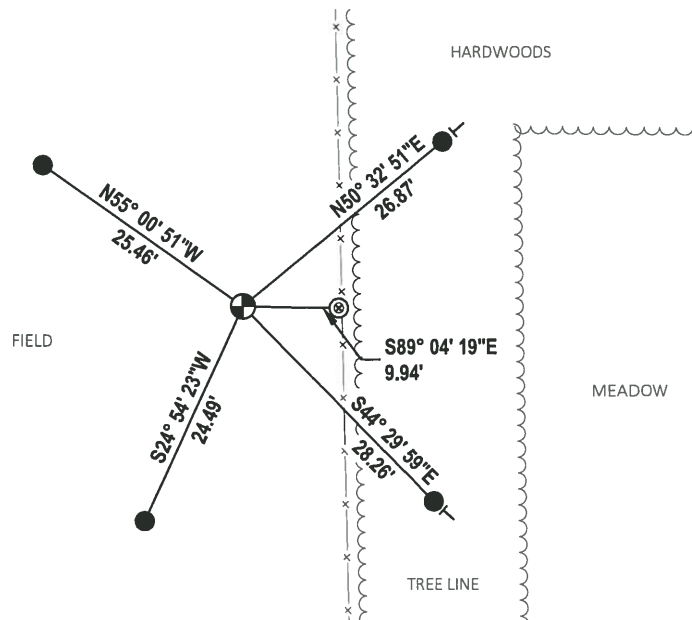
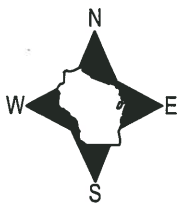


DATA SHOWN HERE ON THIS TIE SHEET IS CORRECT AND COMPLETE TO THE BEST OF MY KNOWLEDGE AND BELIEF.

PROFESSIONAL LAND SURVEYOR

DATE 8-30-18

- TIE SKETCH

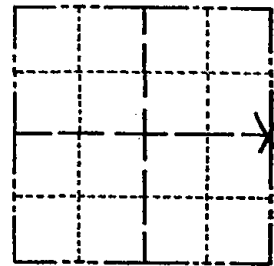


- SET 3/4" x 18" IRON REBAR, 1.50#/FT
- ⊙ FOUND HARRISON MONUMENT (BROKEN-TOP)
- ⊗ WITNESS 4" POST W/NAIL & DND SIGN
- VINYL "T" POST

Government Land Corner Certificate

Adams County
 TYPE OF MONUMENT: HARRISON
 STATE PLANE COORDINATES: N _____
 E _____
 ELEVATION — M.S.L. DATUM: _____
 THETA ANGLE: _____
 FIELD BOOK: LL. PAGE _____
 DRAWN BY: BASLER

CORNER NO. 59
 SECTION 14
 TOWN 17
 RANGE 6E



LOCATION
 (Indicated by 'X')

SEAL:



BASIS FOR MONUMENT LOCATION

Show info such as: History of corner, with reference to Vol. and pg., dates, surveyor; exact description of monument replaced; if location computed, by taped or EDM traverse; landowner remarks, etc. (Use reverse side if necessary)

Searched area, could find no evidence of the Original monument or of any remonumentation thereof. Set Corner midway on line between NE Cor. & SE Cor. 14-17-6E.

SEE REVERSE SIDE
 FOR NEW SKETCH - 10-29-85

DATA SHOWN HERE ON
 CERTIFIED CORRECT:

Wayne Basler
 Registered Land Surveyor

DATE: 6-20-80

TIE SKETCH

Show at least four ties, also fence lines, roads, topo, size and type of witness trees' and if off road - best way to arrive at corner.

