

PUBLIC LAND SURVEY MONUMENT RECORD

TYPE OF MONUMENT: HARRISON (BROKEN-TOP)

ADAMS COUNTY COORDINATES, NAD 83 (2007)

N. 208279.866

E. 544276.855

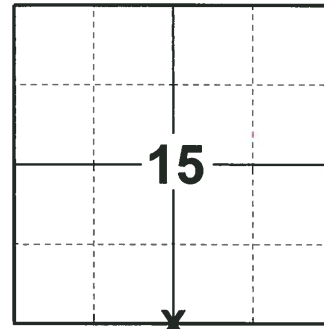
ELEVATION- DATUM

FIELD WORK DATE: 08/17/2018

BASIS FOR MONUMENT LOCATION

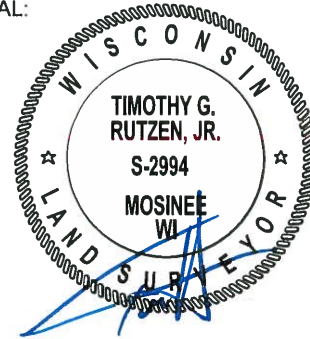
1979 - PLS 1478 CALCULATED THE CORNER POSITION EQUIDISTANT AND ON LINE BETWEEN ADJACENT SECTION CORNERS. NO EVIDENCE OF THE POST AND BEARINGS REFERRED TO BY M.C. SMITH IN SURVEYS OF 12/21/12 AND 12/19/07 WERE FOUND. SET A HARRISON AT THE CALCULATED POSITION AND TIED OUT.

2018 - PLS 2994 FOUND A HARRISON MONUMENT WITH A BROKEN-TOP 2" ABOVE THE GROUND SURFACE. FOUND NO EVIDENCE OF ANY OF THE EXISTING TIES OR WITNESSES. VERIFIED THE CORNER TO BE NEAR ON LINE AND EQUIDISTANT WITH THE SECTION CORNERS TO THE EAST AND WEST. ACCEPTED THE HARRISON MONUMENT WITH A BROKEN-TOP AS THE BEST EVIDENCE OF THE CORNER LOCATION. SET 4 NEW TIES AND MEASURED TO THE TIES.



LOCATION
(INDICATE CORNER BY "X")

SEAL:



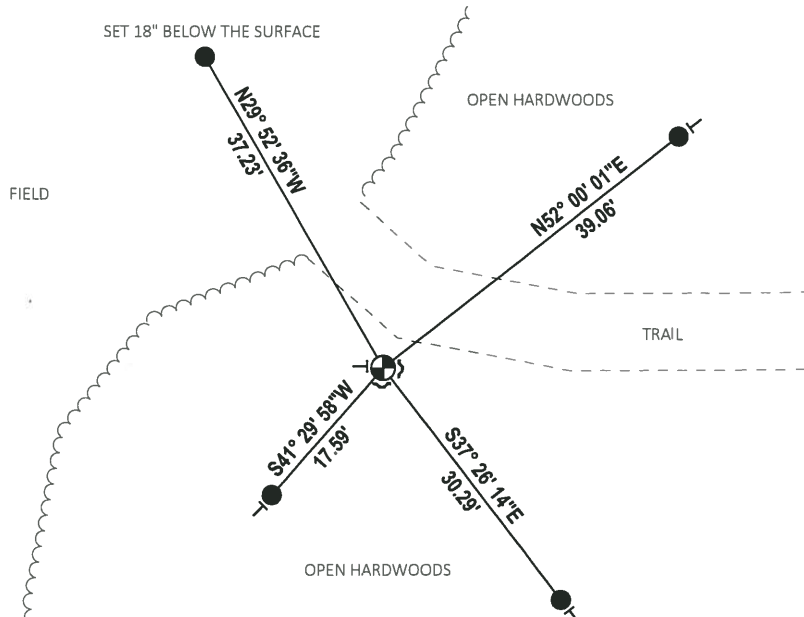
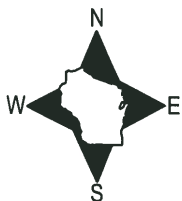
DATA SHOWN HERE ON THIS TIE SHEET IS CORRECT AND COMPLETE TO THE BEST OF MY KNOWLEDGE AND BELIEF.

PROFESSIONAL LAND SURVEYOR

DATE 8-30-18

TIE SKETCH

NOTE: THE CORNER FALLS 7'± SOUTH OF THE CENTERLINE OF THE TRAIL.



- SET 3/4" x 18" IRON REBAR, 1.50#/FT
- ⊕ FOUND HARRISON MONUMENT (BROKEN-TOP)
- ↙ STEEL FENCE POST
- ← VINYL "T" POST

Government Land Corner Certificate

ADAMIS County

TYPE OF MONUMENT: HARRISON

STATE PLANE COORDINATES: N _____
E _____

ELEVATION — M.S.L. DATUM: _____

THETA ANGLE: _____

FIELD BOOK: 78 PAGE 73

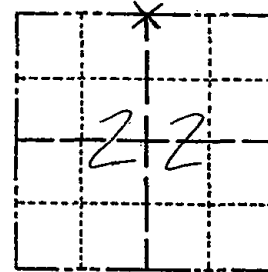
DRAWN BY: GREG RHINEHART

CORNER NO. 68

SECTION 22

TOWN 17

RANGE 6



LOCATION
(Indicated by 'X')

SEAL:



DATA SHOWN HERE ON
CERTIFIED CORRECT:

Gregory P. Rhinehart
Registered Land Surveyor

DATE: 12/11/79

BASIS FOR MONUMENT LOCATION

Show info such as: History of corner, with reference to Vol. and pg., dates, surveyor; exact description of monument replaced; if location computed, by taped or EDM traverse; landowner remarks, etc. (Use reverse side if necessary)

Set Monument Equidistant and on line between adjacent section Corners.

No evidence of the post and bearings referred to by M.C. Smith in surveys of 12/21/12 and 12/19/07 was found.

OK 1-15-90 SS

1-GONE, 2-NEW 8-1-94 JG-RS TOP BROKEN OFF

ALL OK TOP BROKEN OFF, 4-6-00-JG

ALL OK 3-22-05 JG

3 NEW TIES 1-25-10-SS

TIE SKETCH

Show at least four ties, also fence lines, roads, topo, size and type of witness trees and if off road - best way to arrive at corner.

