

20
SECTION

17
TOWN

06
RANGE

ADAMS COUNTY

COUNTY CORNER NO: 76

ROMPORTOL ID: 41706202000

PUBLIC LAND SURVEY MONUMENT RECORD

TYPE OF MONUMENT: HARRISON
ADAMS COUNTY COORDINATES, NAD 83 (2007)

N. 205617.166

E. 536385.626

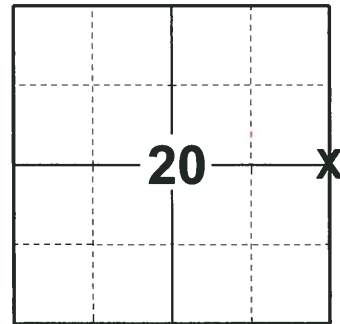
ELEVATION- _____ DATUM _____

FIELD WORK DATE: 08/27/2018

BASIS FOR MONUMENT LOCATION

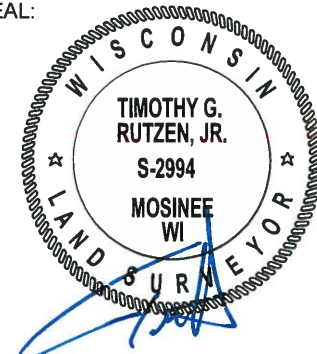
1980 - PLS DUG AT THE INTERSECTION WITH A BACKHOE FOR EVIDENCE OF THE ORIGINAL MONUMENT, COULD NOT FIND ANY. FOUND WITNESS PIPES (1-1/2" IP'S WITH CAPS) WITH DISTANCES TO CORNER STAMPED. ACCEPTED SAID PIPES AND MONUMENTED CALCULATED CORNER WITH HARRISON MONUMENT AND TIED OUT.

2018 - PLS 2994 FOUND A HARRISON MONUMENT 6" BELOW THE ROAD SURFACE AND 1 TIE. THE MONUMENT AGREES WITH THE EXISTING TIE. ACCEPTED THE HARRISON MONUMENT AS THE CORNER LOCATION. SET 3 NEW TIES AND MEASURED TO THE TIES.



LOCATION
(INDICATE CORNER BY "X")

SEAL:



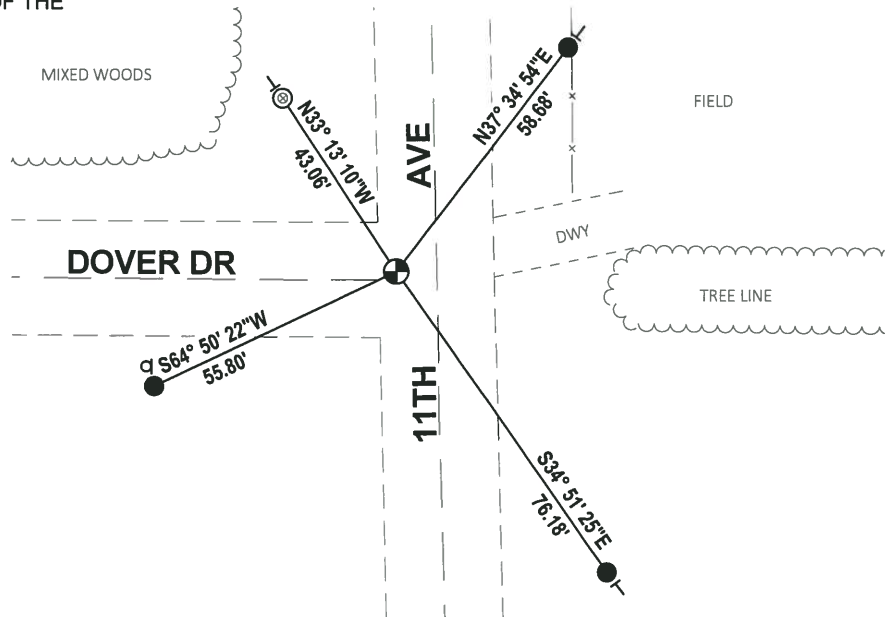
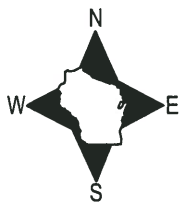
DATA SHOWN HERE ON THIS TIE SHEET IS CORRECT AND COMPLETE TO THE BEST OF MY KNOWLEDGE AND BELIEF.

PROFESSIONAL LAND SURVEYOR

DATE 8-30-18

- TIE SKETCH

NOTE: THE CORNER FALLS 8± WEST OF THE CENTERLINE OF 11TH AVE AND 2± NORTH OF THE CENTERLINE OF DOVER DR.

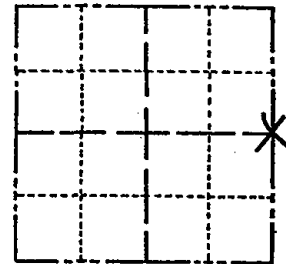


- SET 3/4" x 18" IRON REBAR, 1.50#/FT
- ⊙ FOUND 1-1/2" O.D. IRON PIPE
- ⊕ FOUND HARRISON MONUMENT
- ⊔ STOP SIGN
- ⊥ VINYL "T" POST

Government Land Corner Certificate

Adams County
 TYPE OF MONUMENT: HARRISON
 STATE PLANE COORDINATES: N _____
 E _____
 ELEVATION — M.S.L. DATUM: _____
 THETA ANGLE: _____
 FIELD BOOK: L.L. PAGE _____
 DRAWN BY: Basler

CORNER NO. 76
 SECTION 20
 TOWN 17
 RANGE 6E



LOCATION
(Indicated by 'X')

SEAL:



DATA SHOWN HERE ON
 CERTIFIED CORRECT:

Wayne Basler
 Registered Land Surveyor

DATE: 6-20-80

BASIS FOR MONUMENT LOCATION

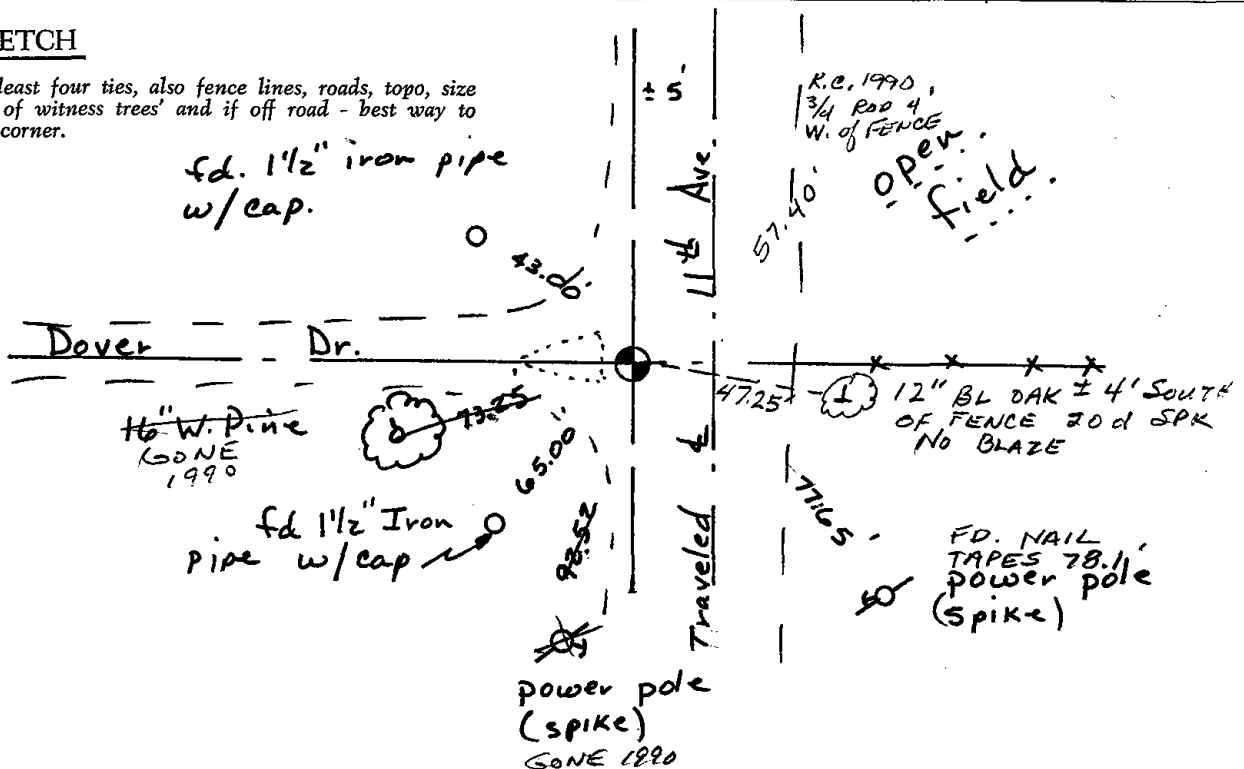
Show info such as: History of corner, with reference to Vol. and pg., dates, surveyor; exact description of monument replaced; if location computed, by taped or EDM traverse; landowner remarks, etc. (Use reverse side if necessary)

Dug at intersection with backhoe for evidence of Original monument, could not locate. Found witness pipes (1 1/2" with caps) with distances to corner stamped. Accepted said pipes and monumented corner with Harrison Mon.

ALL OK 7-18-85 DK
 1-NEW, 2-GONE 1990 KZ
 SEE K. CARLSON NEXT PAGE
 OK, 1-25-05-JG
 OK-1-26-10 SS

TIE SKETCH

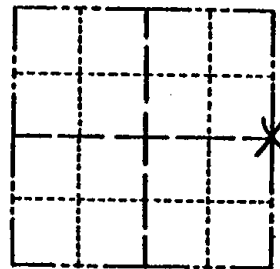
Show at least four ties, also fence lines, roads, topo, size and type of witness trees and if off road - best way to arrive at corner.



Government Land Corner Certificate

Adams County
 TYPE OF MONUMENT: HARRISON
 STATE PLANE COORDINATES: N _____
 E _____
 ELEVATION — M.S.L. DATUM: _____
 THETA ANGLE: _____
 FIELD BOOK: L.C. PAGE _____
 DRAWN BY: Basler

CORNER NO. 76
 SECTION 20
 TOWN 17
 RANGE 6E



LOCATION
(Indicated by 'X')

BASIS FOR MONUMENT LOCATION

Show info such as: History of corner, with reference to Vol. and pg., dates, surveyor; exact description of monument replaced; if location computed, by taped or EDM traverse; landowner remarks, etc. (Use reverse side if necessary)

Dug at intersection with backhoe for evidence of Original monument, could not locate. Found witness pipes (1 1/2" with caps) with distances to corner stamped. Accepted said pipes and monumented corner with Harrison Mon.

ALL OK 7-18-85 DK
 New Ties 8-15-90 K. Carlson
 ALL OK 8-1-94 JG-BS
 ALL OK, 2-14-00, JG

SEAL:



DATA SHOWN HERE ON
 CERTIFIED CORRECT:

Wayne Basler
 Registered Land Surveyor

DATE: 6-20-80

TIE SKETCH

Show at least four ties, also fence lines, roads, topo, size and type of witness trees' and if off road - best way to arrive at corner.

