

21
SECTION

17
TOWN

06
RANGE

ADAMS COUNTY

COUNTY CORNER NO: 77
ROMPORTOL ID: 41706212000

PUBLIC LAND SURVEY MONUMENT RECORD

TYPE OF MONUMENT: HARRISON (BROKEN-TOP)
ADAMS COUNTY COORDINATES, NAD 83 (2007)

N. 205567.918

E. 541691.825

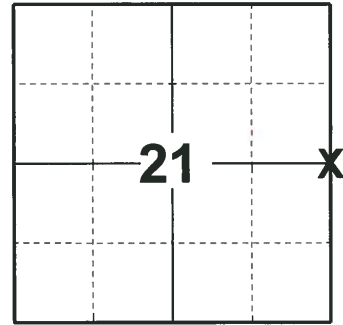
ELEVATION- _____ DATUM _____

FIELD WORK DATE: 08/27/2018

BASIS FOR MONUMENT LOCATION

1978 - PLS 878 DUG WITH A BACKHOE AND FOUND A POINTED 6"x7"x16" RED SANDSTONE, WHICH WAS ACCEPTED AS THE CORNER AND REPLACED WITH A HARRISON. TIED OUT CORNER. NOTE: THE STONE WAS FRACTURED WHILE DIGGING AND THE PIECES SET IN A CIRCLE AROUND THE CORNER.

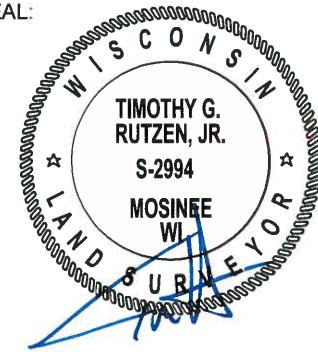
2018 - PLS 2994 FOUND A HARRISON MONUMENT WITH A BROKEN-TOP 6" BELOW THE ROAD SURFACE, 1 TIE AND 1 PROPERTY IRON. THE MONUMENT AGREES WITH THE EXISTING TIE. ACCEPTED THE HARRISON MONUMENT WITH A BROKEN-TOP AS THE CORNER LOCATION. SET 2 NEW TIES AND MEASURED TO THE TIES AND PROPERTY IRON.



LOCATION

(INDICATE CORNER BY "X")

SEAL:



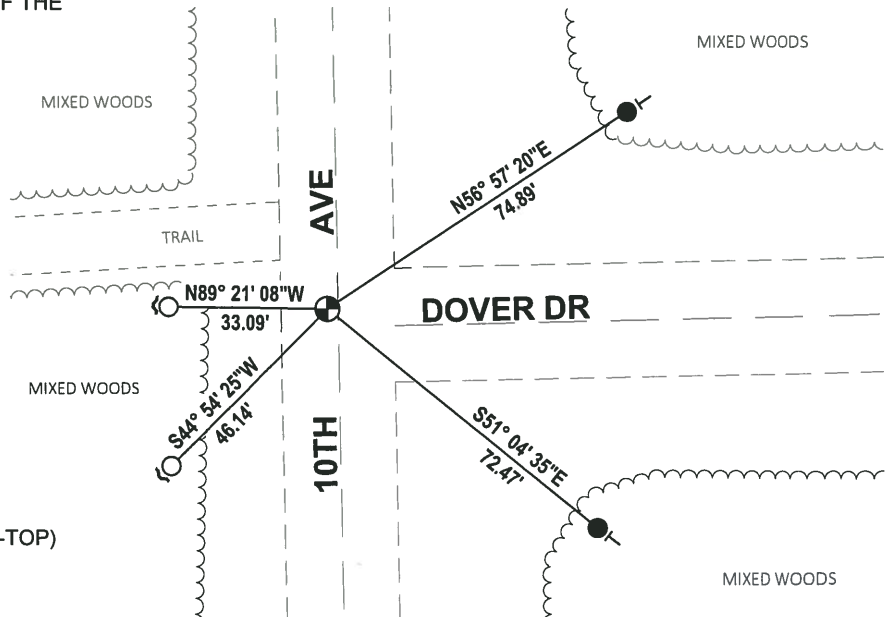
DATA SHOWN HERE ON THIS TIE SHEET IS CORRECT AND COMPLETE TO THE BEST OF MY KNOWLEDGE AND BELIEF.

PROFESSIONAL LAND SURVEYOR

DATE 8-30-18

TIE SKETCH

NOTE: THE CORNER FALLS 2± WEST OF THE CENTERLINE OF 10TH AVE AND 4± NORTH OF THE CENTERLINE OF DOVER DR.

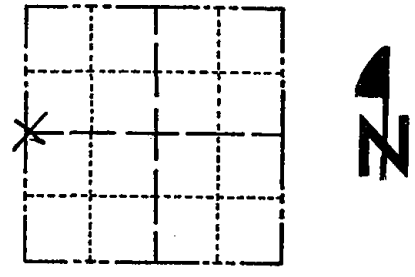


- SET 3/4" x 18" IRON REBAR, 1.50#/FT
- FOUND 3/4" IRON ROD
- ⊙ FOUND HARRISON MONUMENT (BROKEN-TOP)
- ┘ STEEL FENCE POST
- └ VINYL "T" POST

Government Land Corner Certificate

ADAMS County
 TYPE OF MONUMENT: Harrison Monument
 STATE PLANE COORDINATES: N _____
 E _____
 ELEVATION — M.S.L. DATUM: _____
 THETA ANGLE: _____
 FIELD BOOK: 102 PAGE 76
 DRAWN BY: G. Rhinehart

CORNER NO. 77
 SECTION 22
 TOWN 17
 RANGE 6



LOCATION
 (Indicated by 'X')

BASIS FOR MONUMENT LOCATION

Show info such as: History of corner, with reference to Vol. and pg., dates, surveyor; exact description of monument replaced; if location computed, by taped or EDM traverse; landowner remarks, etc. (Use reverse side if necessary)

Anthony B. Kiedrowski dug with backhoe and found pointed 6"x7"x16" red sandstone, which was accepted as the corner and replaced with a Harrison monument.

The Stone was fractured while digging and the pieces set in a circle around the corner.

SEAL:



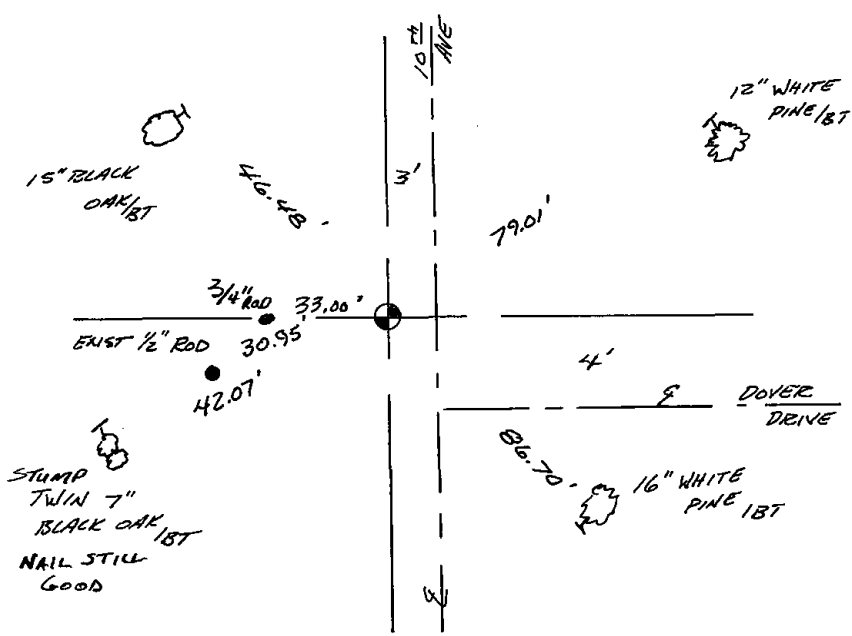
DATA SHOWN HERE ON CERTIFIED CORRECT:

Anthony B. Kiedrowski
 Registered Land Surveyor

DATE: 12/5/28

TIE SKETCH

Show at least four ties, also fence lines, roads, topo, size and type of witness trees and if off road - best way to arrive at corner.



MAINTENANCE RECORD

Date	Init.	Remarks
3/6/80	RN-SS	MON + TIES OK
7-18-85	DK	ALL OK
1-15-90	SS	ALL OK
8-1-94	JG-B5	ALL OK
2-14-00	JG	1-NEW TIE
1-28-05	JG	OK
1-25-10	SS	OK