

20 SECTION 17 TOWN 06 RANGE

# ADAMS COUNTY

COUNTY CORNER NO: 85  
ROMPORTOL ID: 41706200000

## PUBLIC LAND SURVEY MONUMENT RECORD

TYPE OF MONUMENT: SURVEY NAIL  
ADAMS COUNTY COORDINATES, NAD 83 (2007)

N. 202977.445

E. 536429.538

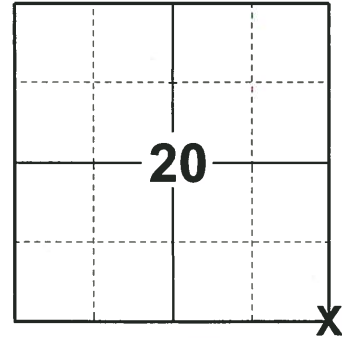
ELEVATION-      DATUM     

FIELD WORK DATE: 09/17/2018

### BASIS FOR MONUMENT LOCATION

1973 - PLS 878 ESTABLISHED THE CORNER LOCATION BY RETRACEMENT OF THE CHERNY SURVEY OF PLAT IN THE NE 1/4 OF THE SECTION. SET A HARRISON MONUMENT AND TIED OUT.

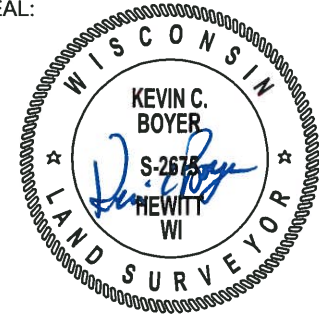
2018 - PLS 2675 FOUND A MAG SPIKE IN THE ROAD SURFACE AND 1 TIE. REMOVED THE MAG SPIKE AND FOUND NO EVIDENCE OF ANY ADDITIONAL MONUMENTATION BELOW THE MAG SPIKE LOCATION. THE MAG SPIKE LOCATION AGREES WITH THE EXISTING TIE. ACCEPTED THE MAG SPIKE LOCATION AS THE CORNER LOCATION AND RE-SET SURVEY SPIKE IN THE MAG SPIKE LOCATION. SET 3 NEW TIES AND MEASURED TO THE TIES.



LOCATION

(INDICATE CORNER BY "X")

SEAL:



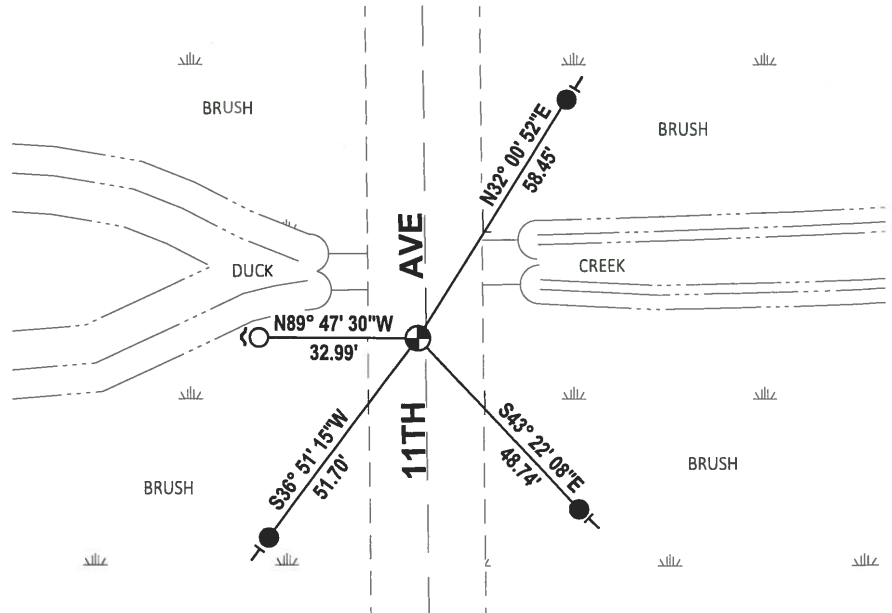
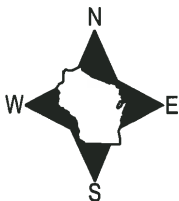
DATA SHOWN HERE ON THIS TIE SHEET IS CORRECT AND COMPLETE TO THE BEST OF MY KNOWLEDGE AND BELIEF.

PROFESSIONAL LAND SURVEYOR

DATE 12/4/2018

### - TIE SKETCH

NOTE: THE CORNER FALLS 2± WEST OF THE CENTERLINE OF 11TH AVE.



- SET 3/4" x 18" IRON REBAR, 1.50#/FT
- FOUND 3/4" IRON ROD
- ⊕ SET SURVEY NAIL
- ↘ STEEL FENCE POST
- | VINYL "T" POST

ADAMS COUNTY

Survey Monument Record

TYPE OF MONUMENT: Harrison std.

STATE PLANE COORDINATES: N \_\_\_\_\_

E \_\_\_\_\_

ELEVATION — M.S.L. DATUM: \_\_\_\_\_

THETA ANGLE: \_\_\_\_\_

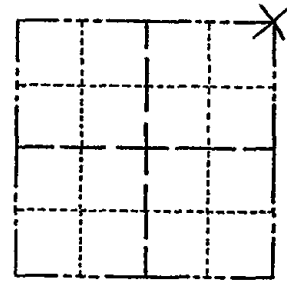
FIELD BOOK: 108 PAGE 20

CORNER NO. 274

SECTION 29

TOWN 17

RANGE 6



LOCATION  
(Indicated by 'X')

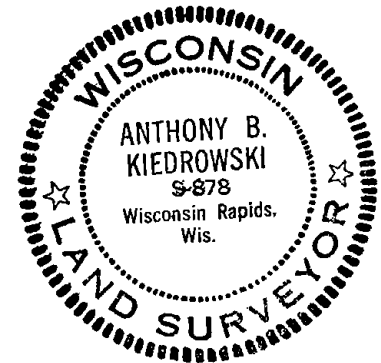
SEAL:

BASIS FOR MONUMENT LOCATION

(Use reverse side if necessary)

Show info such as: History of corner, with reference to Vol. and pg, dates, surveyor; exact description of monument replaced; if location computed, by taped or EDM traverse; landowner remarks, etc.

Point established by retracement of Cherny survey of plat in the NE 1/4 of the section.



TOP SECTION BROKEN 9-27-75 SS  
MON. BEEP TIES OK 3/6/80 RN-SS  
ALL OK 7-18-85 OK  
1-10-90 OK SS  
6-NEW TIES 8-1-94 JG-BS  
1-NEW TIE, 2-14-00, JG

CERTIFIED CORRECT:

*Anthony B. Kiedrowski*  
Registered Land Surveyor

DATE: 5/9/73

TIE SKETCH OK 1-25-05-JG  
" 1-26-10 SS

(Show at least four ties)

