

22
SECTION

17
TOWN

06
RANGE

ADAMS COUNTY

COUNTY CORNER NO: 89

ROMPORTOL ID: 41706220000

PUBLIC LAND SURVEY MONUMENT RECORD

TYPE OF MONUMENT: HARRISON (BROKEN-TOP)

ADAMS COUNTY COORDINATES, NAD 83 (2007)

N. 203050.679

E. 546953.477

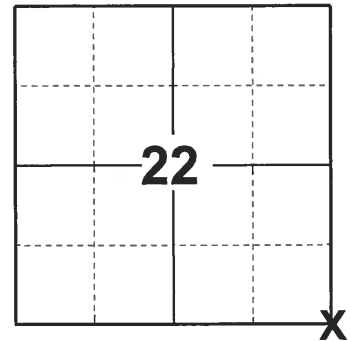
ELEVATION- DATUM

FIELD WORK DATE: 09/19/2018

BASIS FOR MONUMENT LOCATION

1974 - PLS 1103 RAN AN EDM/TRANSIT TRAVERSE OF SECTION 23 AND DETERMINED EXTENT OF SEARCH AREA. AN EXTENSIVE SEARCH REVEALED NO EVIDENCE OF THE LOCATION OF THE ORIGINAL SECTION CORNER. USING THE ORIGINAL SURVEY NOTES AND THE RIGHT-OF-WAY PLAT FOR THE CHICAGO AND NORTHWESTERN RAILWAY, THE LOCATION OF THE SECTION CORNER WAS DETERMINED. SET A HARRISON MONUMENT AT THE CORNER LOCATION AND TIED OUT.

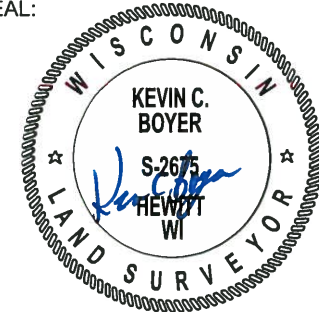
2018 - PLS 2675 FOUND A HARRISON MONUMENT WITH A BROKEN-TOP 2" BELOW THE GROUND SURFACE AND 1 TIE. THE MONUMENT AGREES WITH THE EXISTING TIE. ACCEPTED THE HARRISON MONUMENT WITH A BROKEN-TOP AS THE CORNER LOCATION. SET 3 NEW TIES AND MEASURED TO THE TIES.



LOCATION

(INDICATE CORNER BY "X")

SEAL:



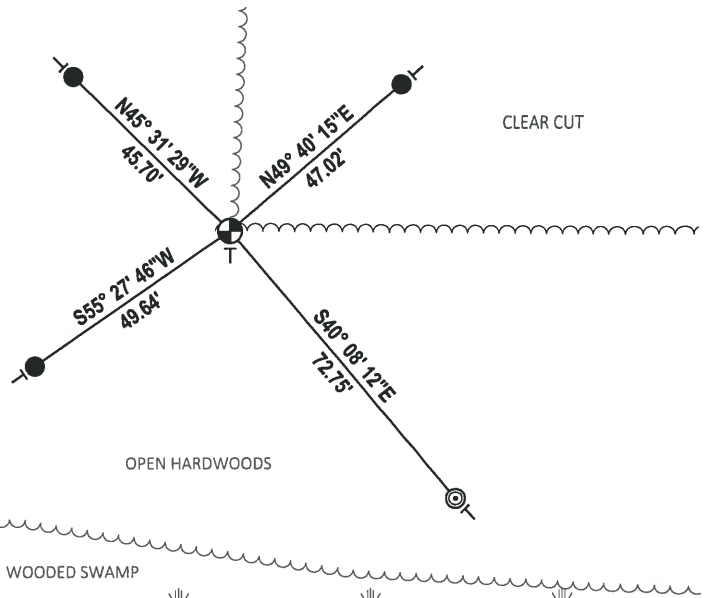
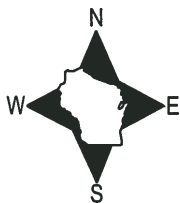
DATA SHOWN HERE ON THIS TIE SHEET IS CORRECT AND COMPLETE TO THE BEST OF MY KNOWLEDGE AND BELIEF.

PROFESSIONAL LAND SURVEYOR

DATE 12/4/2018

- TIE SKETCH

NOTE: THE CORNER FALLS 200± SOUTH OF THE POWER LINES.



- SET 3/4" x 18" IRON REBAR, 1.50#/FT
- ⊙ FOUND 2-3/8" O.D. IRON PIPE
- ⊕ FOUND HARRISON MONUMENT (BROKEN-TOP)
- VINYL "T" POST

ADAMS COUNTY

Survey Monument Record

TYPE OF MONUMENT: STANDARD HARRISON MONUMENT

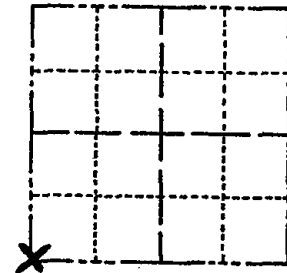
STATE PLANE COORDINATES: N _____ E _____

ELEVATION - M.S.L. DATUM: _____

THETA ANGLE: _____

FIELD BOOK: _____ PAGE _____

CORNER NO. 548
SECTION 23
TOWN 17
RANGE 6



LOCATION (Indicated by 'X')

SEAL:

BASIS FOR MONUMENT LOCATION

(Use reverse side if necessary)

Show info such as: History of corner, with reference to Vol. and pg, dates, surveyor; exact description of monument replaced; if location computed, by taped or EDM traverse; landowner remarks, etc.

Ran EDM/transit traverse of Section 23 and determined extent of search area.

An extensive search revealed no evidence as to the location of the original Section corner. Using the original survey notes and the right-of-way plat for the Chicago and Northwestern Railway, the location of the section corner was determined and monumented.



Everything o.k. 10-18-75 S.S.-D.M.
" " 3/14/80 R.H.-SS
" " 9-17-85 G.R.-SS
" " 1-10-90 SS

CERTIFIED CORRECT:

Dale C. Hagen
Registered Land Surveyor

DATE: August 19, 1974

ALL OK, 4-6-00 - JG
ALL OK 3-14-05 JG-DA

TIE SKETCH

(Show at least four ties)

NOTE: ELEVATED STAKE WITH RED LADDER 150' SOUTHEAST

