

23  
SECTION

17  
TOWN

06  
RANGE

# ADAMS COUNTY

COUNTY CORNER NO: 90  
ROMPORTOL ID: 41706230020

## PUBLIC LAND SURVEY MONUMENT RECORD

TYPE OF MONUMENT: HARRISON  
ADAMS COUNTY COORDINATES, NAD 83 (2007)

N. 203052.922

E. 549614.185

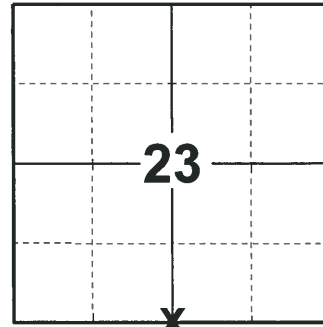
ELEVATION- \_\_\_\_\_ DATUM \_\_\_\_\_

FIELD WORK DATE: 08/16/2018

### BASIS FOR MONUMENT LOCATION

1974 - PLS 1103 RAN EDM/TRANSIT TRAVERSE OF SECTION 23 TO DETERMINE THE EXTENT OF THE SEARCH AREA. FOUND NO EVIDENCE OF THE CORNER OR ANY OF ITS ACCESSORY MONUMENTS. CALCULATED THE CORNER POSITION ON LINE AND EQUIDISTANT BETWEEN THE SOUTHWEST AND SOUTHEAST CORNERS OF SECTION 23. SET A HARRISON AT THE CALCULATED POSITION AND TIED OUT.

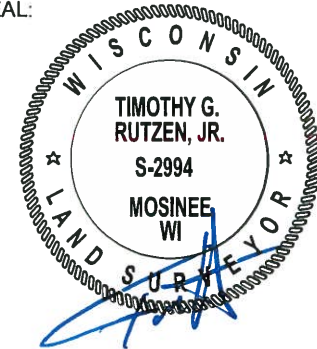
2018 - PLS 2994 FOUND A HARRISON MONUMENT 6" ABOVE THE GROUND SURFACE AND 1 WITNESS TREE. THE MONUMENT AGREES WITH THE EXISTING WITNESS TREE. ACCEPTED THE HARRISON MONUMENT AS THE CORNER LOCATION. SET 4 NEW TIES AND MEASURED TO THE TIES AND WITNESS TREE.



**LOCATION**

(INDICATE CORNER BY "X")

SEAL:



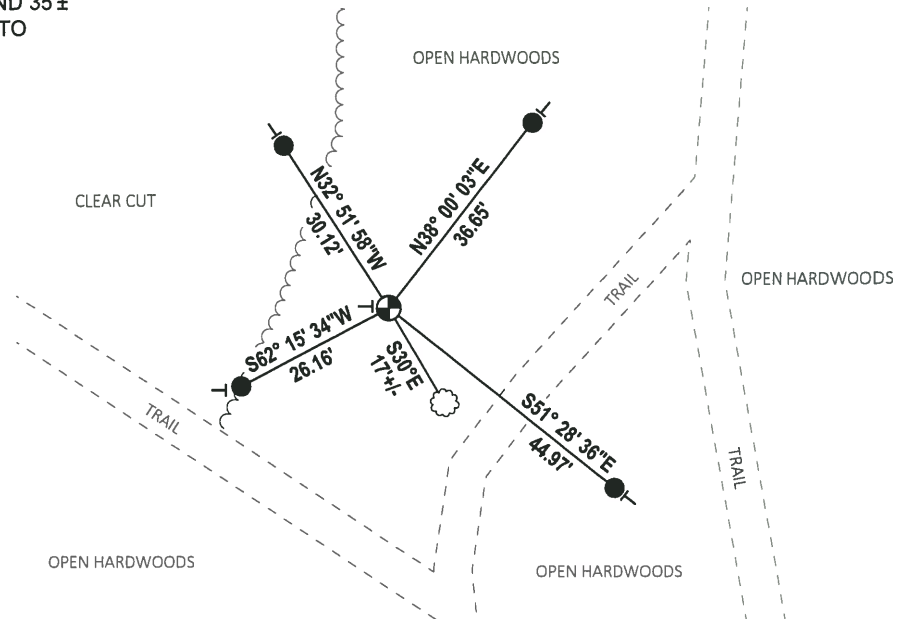
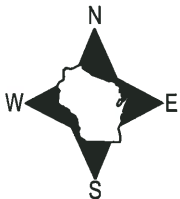
DATA SHOWN HERE ON THIS TIE SHEET IS CORRECT AND COMPLETE TO THE BEST OF MY KNOWLEDGE AND BELIEF.

PROFESSIONAL LAND SURVEYOR

DATE 8-30-18

### - TIE SKETCH

NOTE: THE CORNER FALLS 25'± WEST OF THE CENTERLINE OF THE TRAIL TO THE EAST AND 35'± NORTH OF THE CENTERLINE OF THE TRAIL TO THE SOUTH.



- SET 3/4" x 18" IRON REBAR, 1.50#/FT
- ⊙ FOUND HARRISON MONUMENT
- ┆ VINYL "T" POST
- ⊗ WITNESS TREE

**ADAMS COUNTY**

**Survey Monument Record**

TYPE OF MONUMENT: Standard Harrison

STATE PLANE COORDINATES: N \_\_\_\_\_  
E \_\_\_\_\_

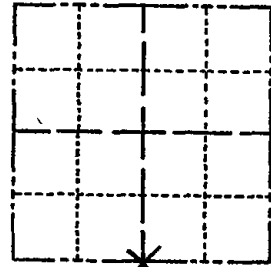
ELEVATION — M.S.L. DATUM: \_\_\_\_\_

THETA ANGLE: \_\_\_\_\_

FIELD BOOK: \_\_\_\_\_ PAGE \_\_\_\_\_

CORNER NO. 546  
SECTION 23  
TOWN 17  
RANGE 6

90



LOCATION  
(Indicated by 'X')

SEAL:

**BASIS FOR MONUMENT LOCATION**

(Use reverse side if necessary)

Show info such as: History of corner, with reference to Vol. and pg, dates, surveyor; exact description of monument replaced; if location computed, by taped or EDM traverse; landowner remarks, etc.

Ran EDM/transit traverse of Section 23 and determined extent of search area.

Could find no evidence of the corner or any of its accessory monuments. Set corner on line and equidistant between Southwest and Southeast corners of Section 23.



Everything o.k. 10-18-75 SS-DM  
" " 3/13/80 RM-SS  
" " 9/17/85 GR-SS

ALL OK 1990 KZ  
ALL OK 8-2-94 JG-BS  
ALL OK, 4-6-00 - JG

CERTIFIED CORRECT:

Dale C. Hagen  
Registered Land Surveyor

DATE: October 2, 1974

**TIE SKETCH** ALL OK, 3-14-05, JG-DA  
Z NEW 2-5-10 SS

(Show at least four ties)

