

PUBLIC LAND SURVEY MONUMENT RECORD

TYPE OF MONUMENT: HARRISON
ADAMS COUNTY COORDINATES, NAD 83 (2007)

N. 203076.601

E. 554896.701

ELEVATION- _____ DATUM _____

FIELD WORK DATE: 08/14/2018

BASIS FOR MONUMENT LOCATION

1979 - PLS 1167 RAN EDM TRAVERSE OF 25-17-6E. DUG WITH A BACKHOE FOR CORNER WITH COUNTY SURVEYOR #878 AND FOUND NO EVIDENCE OF THE CORNER. CALCULATED THE CORNER POSITION EQUIDISTANT AND ON LINE BETWEEN ADJACENT SECTION CORNERS. SET A HARRISON AT THE CALCULATED POSITION AND TIED OUT.

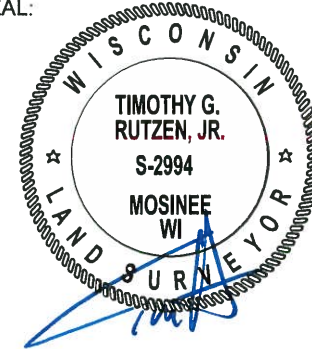
2018 - PLS 2994 FOUND A HARRISON MONUMENT 6" BELOW THE GROUND SURFACE. FOUND NO EVIDENCE OF ANY OF THE EXISTING TIES OR WITNESSES. VERIFIED THE CORNER TO BE NEAR ON LINE AND EQUIDISTANT WITH THE SECTION CORNERS TO THE EAST AND WEST. ACCEPTED THE HARRISON MONUMENT AS THE BEST EVIDENCE OF THE CORNER LOCATION. SET 4 NEW TIES AND MEASURED TO THE TIES.



LOCATION

(INDICATE CORNER BY "X")

SEAL:



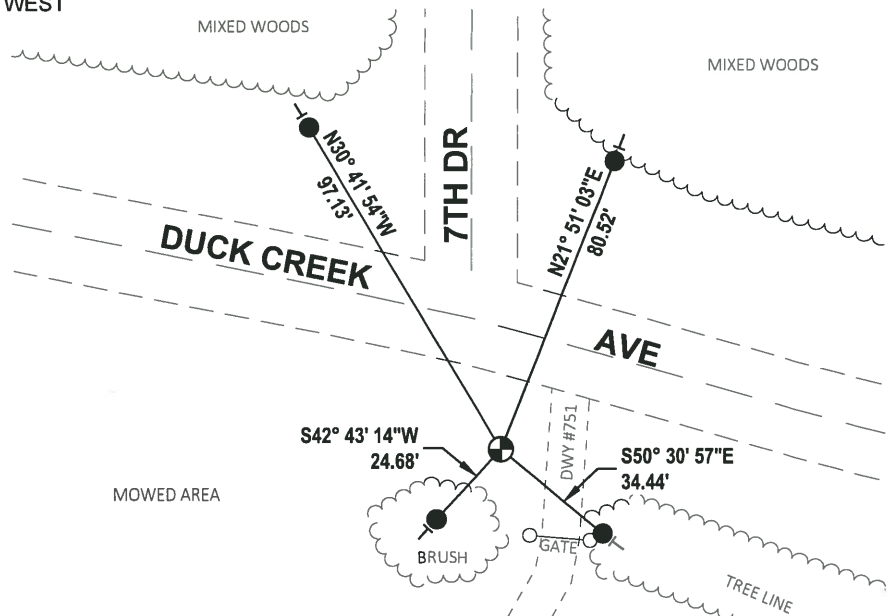
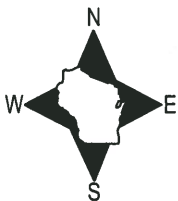
DATA SHOWN HERE ON THIS TIE SHEET IS CORRECT AND COMPLETE TO THE BEST OF MY KNOWLEDGE AND BELIEF.

PROFESSIONAL LAND SURVEYOR

DATE 8-30-18

- TIE SKETCH -

NOTE: THE CORNER FALLS 31'± SOUTH OF THE CENTERLINE OF DUCK CREEK AVE AND 17'± WEST OF THE CENTERLINE OF DWY #751.

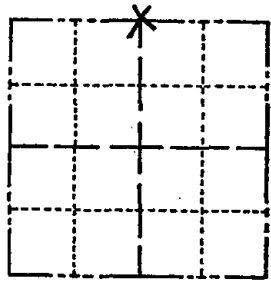


- SET 3/4" x 18" IRON REBAR, 1.50#/FT
- ⊕ FOUND HARRISON MONUMENT
- VINYL "T" POST

Government Land Corner Certificate

Adams County
 TYPE OF MONUMENT: Harrison
 STATE PLANE COORDINATES: N _____
 E _____
 ELEVATION — M.S.L. DATUM: _____
 THETA ANGLE: _____
 FIELD BOOK: LL. PAGE _____
 DRAWN BY: BASLER

CORNER NO. 92
 SECTION 25
 TOWN 17
 RANGE 6E



LOCATION
(Indicated by 'X')

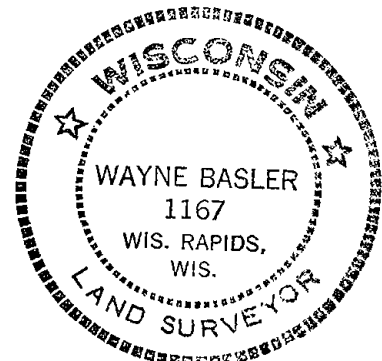
BASIS FOR MONUMENT LOCATION

Show info such as: History of corner, with reference to Vol. and pg., dates, surveyor; exact description of monument replaced; if location computed, by taped or EDM traverse; landowner remarks, etc. (Use reverse side if necessary)

Ran EDM Traverse of 25-17-6E. Dug with backhoe for Corner by County Surveyor #878. No evidence of Corner could be located.

Set Corner equidistant and on line between adjacent section corners.

SEAL:



DATA SHOWN HERE ON
CERTIFIED CORRECT:

Wayne Basler
Registered Land Surveyor

See Reverse SIDE

DATE: 12-27-79

TIE SKETCH

Show at least four ties, also fence lines, roads, topo, size and type of witness trees' and if off road - best way to arrive at corner.

