

24
SECTION

17
TOWN

06
RANGE

ADAMS COUNTY

COUNTY CORNER NO: 93

ROMPORTOL ID: 41706240000

PUBLIC LAND SURVEY MONUMENT RECORD

TYPE OF MONUMENT: SURVEY NAIL
ADAMS COUNTY COORDINATES, NAD 83 (2007)

N. 203097.702

E. 557519.551

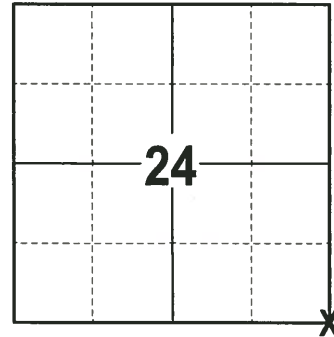
ELEVATION- _____ DATUM _____

FIELD WORK DATE: 11/29/2017

BASIS FOR MONUMENT LOCATION

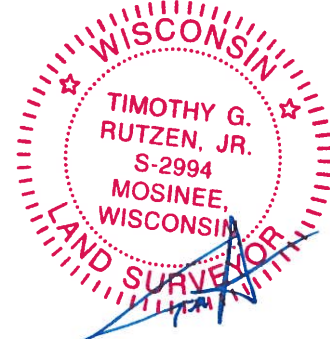
1979 - PLS 1167 RAN E.D.M. TRAVERSE OF 25-17-6E AND DUG FOR THE CORNER WITH A BACKHOE WITH COUNTY SURVEYOR #878. NO EVIDENCE OF THE ORIGINAL CORNER WAS FOUND. COMPARED MEASURED DISTANCES WITH THE ORIGINAL NOTES. SET CORNER ACCORDINGLY. SET A HARRISON MONUMENT AT THE CORNER LOCATION AND TIED OUT.

2017 - PLS 2994 FOUND A PK NAIL, 2 WITNESSES AND 1 PROPERTY IRON (USED AS A TIE). REMOVED THE PK NAIL AND FOUND NO EVIDENCE OF ANY OTHER MONUMENTS. THE PK NAIL FITS WELL WITH THE WITNESSES AND TIES. ACCEPTED THE PK NAIL AS THE CORNER LOCATION AND REPLACED IT WITH A SURVEY NAIL. SET 3 NEW TIES AND MEASURED TO THE TIES AND WITNESSES.



LOCATION
(INDICATE CORNER BY "X")

SEAL:



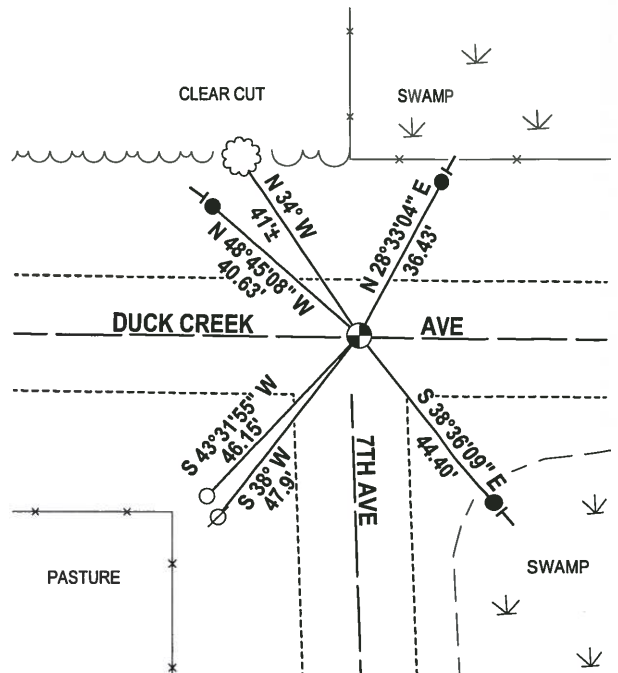
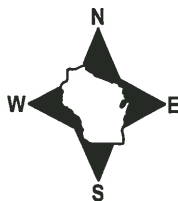
DATA SHOWN HERE ON THIS TIE SHEET IS CORRECT AND COMPLETE TO THE BEST OF MY KNOWLEDGE AND BELIEF.

PROFESSIONAL LAND SURVEYOR

DATE 1-4-18

- TIE SKETCH

NOTE: THE CORNER FALLS 2± EAST OF THE CENTERLINE OF 7TH AVE AND 0.5± NORTH OF THE CENTERLINE OF DUCK CREEK AVE.

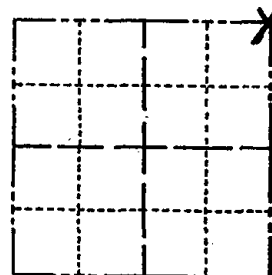


- 3/4" x 18" IRON REBAR SET, 1.50#/FT
- 3/4" IRON ROD FOUND
- SURVEY NAIL SET
- ⊘ WITNESS POWER POLE FOUND
- VINYL "T" POST
- ☁ WITNESS TREE FOUND

Government Land Corner Certificate

Adams County
 TYPE OF MONUMENT: Harrison
 STATE PLANE COORDINATES: N 1
 E _____
 ELEVATION — M.S.L. DATUM: _____
 THETA ANGLE: _____
 FIELD BOOK: LL PAGE _____
 DRAWN BY: Basler

CORNER NO. 93
 SECTION 25
 TOWN 17
 RANGE 6E



LOCATION
(Indicated by 'X')

SEAL:



DATA SHOWN HERE ON
CERTIFIED CORRECT:

Wayne Basler
Registered Land Surveyor

DATE: 12-27-79

BASIS FOR MONUMENT LOCATION

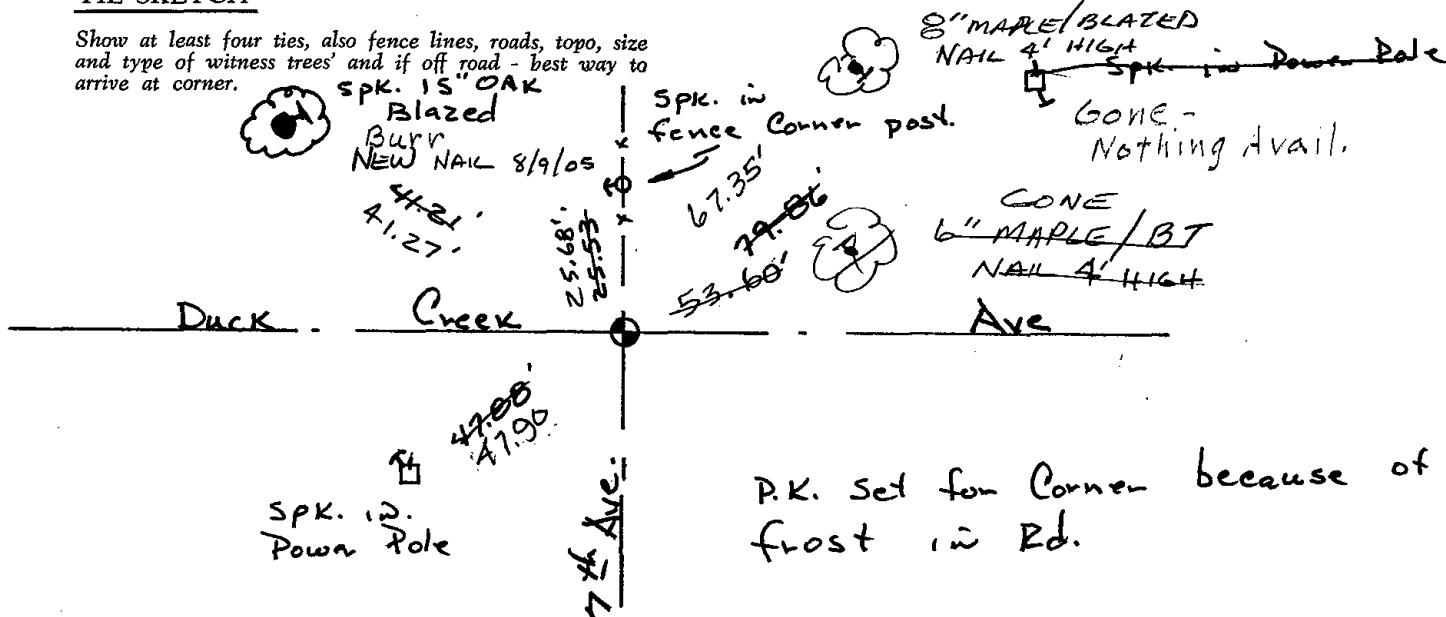
Show info such as: History of corner, with reference to Vol. and pg., dates, surveyor; exact description of monument replaced; if location computed, by taped or EDM traverse; landowner remarks, etc. (Use reverse side if necessary).

Ran EDM Traverse of 25-17-6E
 Dug for Corner with backhoe by County Surveyor #878. No evidence of Original Corner could be found. Compared measured Distances with Orig. Notes, set Corner Accordingly.

Found P.K. - NO Harrison 9-25-85 MB-SS
 FOUND P.K. - NO HARRISON 6-26-90 JG
 OK GR-56 2/13/95
 ALL OK, 2-15-00, JG-SS
 1-NEW, 3-2-05 - JG-JS
 RETIED FOR CONSTRUCTION 8/9/05 JG-SS
 OK 2-4-10 SS

TIE SKETCH

Show at least four ties, also fence lines, roads, topo, size and type of witness trees and if off road - best way to arrive at corner.



P.K. Set for Corner because of frost in Rd.

