

25
SECTION

17
TOWN

05
RANGE

ADAMS COUNTY

COUNTY CORNER NO: 100

ROMPORTOL ID: 41705252000

PUBLIC LAND SURVEY MONUMENT RECORD

TYPE OF MONUMENT: HARRISON (BROKEN-TOP)
ADAMS COUNTY COORDINATES, NAD 83 (2007)

N. 200293.319

E. 525800.871

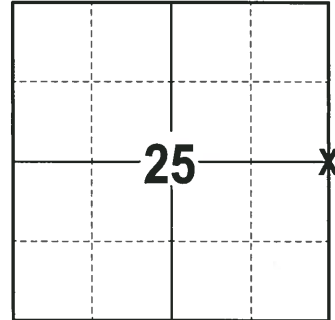
ELEVATION- DATUM

FIELD WORK DATE: 01/02/2018

BASIS FOR MONUMENT LOCATION

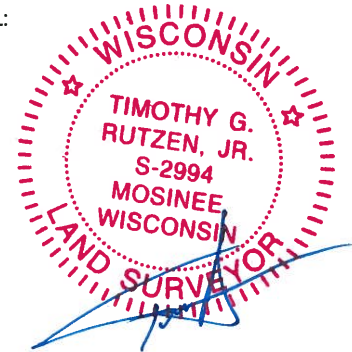
1981 - PLS 1444 THIS CORNER WAS SET BY EQUIDISTANT AND ON A STRAIGHT LINE BETWEEN SECTION CORNERS. NO EVIDENCE OF THE ORIGINAL CORNER OR ANY RESURVEY OF CORNER. SET A HARRISON MONUMENT AT THE CALCULATED LOCATION AND TIED OUT.

2017 - PLS 2994 FOUND A HARRISON MONUMENT WITH A BROKEN-TOP 4" BELOW THE GROUND SURFACE AND 1 TIE. THE MONUMENT AGREES WITH THE EXISTING TIE. ACCEPTED THE HARRISON MONUMENT WITH A BROKEN-TOP AS THE CORNER LOCATION. SET 4 NEW TIES AND MEASURED TO THE TIES.



LOCATION
(INDICATE CORNER BY "X")

SEAL:

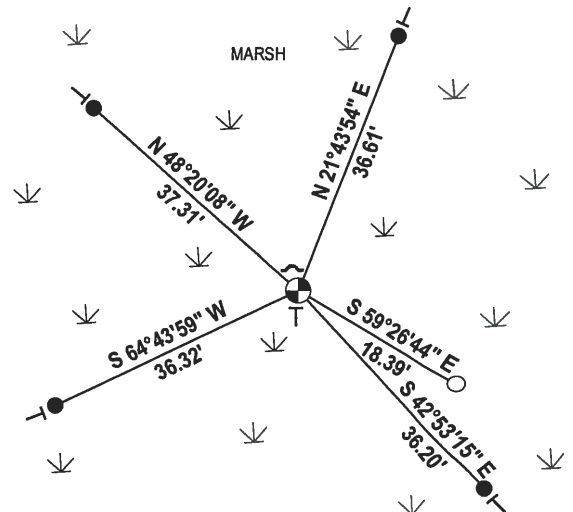
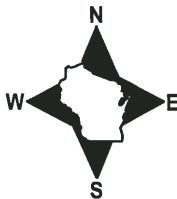


DATA SHOWN HERE ON THIS TIE SHEET IS CORRECT AND COMPLETE TO THE BEST OF MY KNOWLEDGE AND BELIEF.

PROFESSIONAL LAND SURVEYOR

DATE 2-2-18

- TIE SKETCH

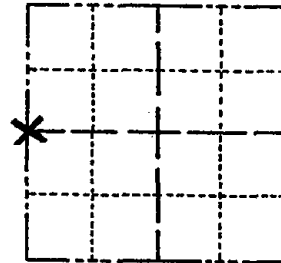


- 3/4" x 48" IRON REBAR SET, 1.50#/FT
- 1-1/4" O.D. IRON PIPE FOUND
- ⊕ HARRISON (BROKEN-TOP) FOUND
- ↘ STEEL FENCE POST
- └ VINYL "T" POST

Government Land Corner Certificate

ADAMS County
 TYPE OF MONUMENT: HARRISON
 STATE PLANE COORDINATES: N _____
 E _____
 ELEVATION — M.S.L. DATUM: _____
 THETA ANGLE: _____
 FIELD BOOK: 76 PAGE 31
 DRAWN BY: LANCE J. HABECK

CORNER NO. 94
 SECTION 30
 TOWN 17
 RANGE 6



LOCATION
(Indicated by 'X')

BASIS FOR MONUMENT LOCATION

Show info such as: History of corner, with reference to Vol. and pg., dates, surveyor; exact description of monument replaced; if location computed, by taped or EDM traverse; landowner remarks, etc. (Use reverse side if necessary)

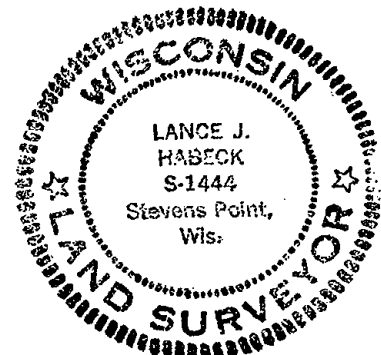
This corner was set equidistant and on a straight line between section corners.

NO evidence of the original corner or any resurvey corner.

TOP OF HARRISON BROKEN
 TIE ALL OK 9-7-90 JG-DC

1- GONE, 1- NEW, TOP BROKEN OFF, 4-17-00 - JG
 ALL OK, 3-21-05, JG

SEAL:



DATA SHOWN HERE ON
CERTIFIED CORRECT:

Lance J. Habeck
 Registered Land Surveyor

DATE: 1/6/81

TIE SKETCH

Show at least four ties, also fence lines, roads, topo, size and type of witness trees and if off road - best way to arrive at corner.

