

29 SECTION 17 TOWN 06 RANGE

# ADAMS COUNTY

COUNTY CORNER NO: 96  
 ROMPORTOL ID: 41706292000

## PUBLIC LAND SURVEY MONUMENT RECORD

TYPE OF MONUMENT: HARRISON (BROKEN-TOP)  
 ADAMS COUNTY COORDINATES, NAD 83 (2007)

N. 200312.907

E. 536435.892

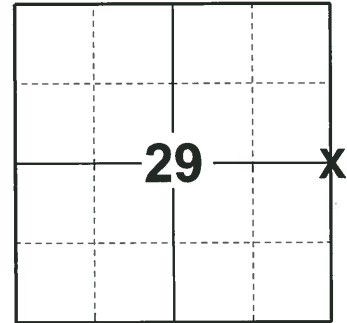
ELEVATION- \_\_\_\_\_ DATUM \_\_\_\_\_

FIELD WORK DATE: 09/17/2018

### BASIS FOR MONUMENT LOCATION

1973 - PLS 878 CALCULATED THE CORNER LOCATION ON A STRAIGHT LINE BETWEEN THE NE AND SE SECTION CORNERS AND AT THE INTERSECTION OF A LINE FROM MULLEN'S SURVEY TO THE WEST. SET A HARRISON AT THE CALCULATED LOCATION AND TIED OUT.

2018 - PLS 2675 FOUND A HARRISON MONUMENT WITH A BROKEN-TOP 12" BELOW THE ROAD SURFACE AND 3 WITNESSES. THE MONUMENT AGREES WITH THE EXISTING WITNESSES. ACCEPTED THE HARRISON MONUMENT WITH A BROKEN-TOP AS THE CORNER LOCATION. SET 4 NEW TIES AND MEASURED TO THE TIES AND WITNESSES.



LOCATION  
(INDICATE CORNER BY "X")

SEAL:



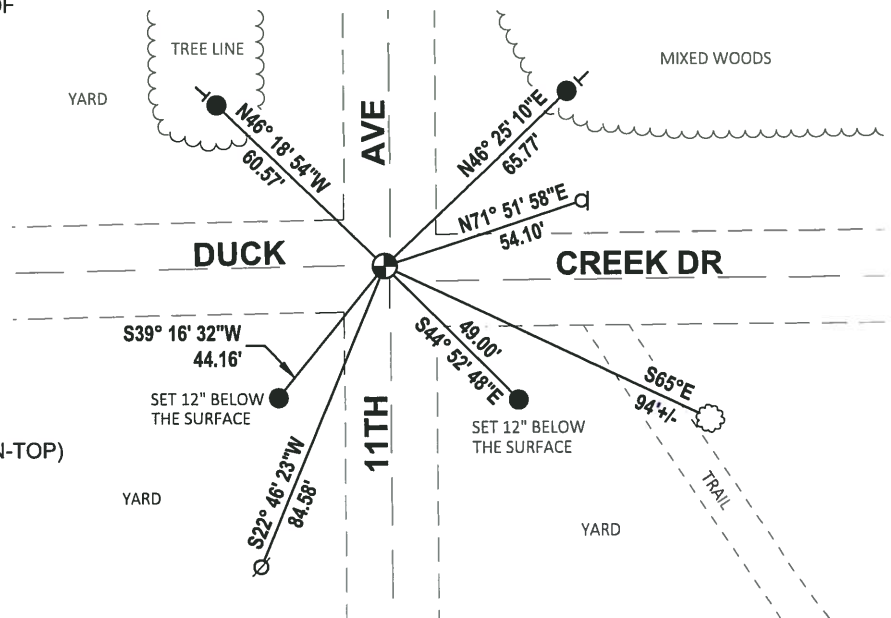
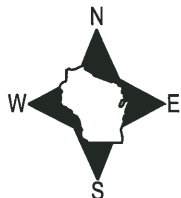
DATA SHOWN HERE ON THIS TIE SHEET IS CORRECT AND COMPLETE TO THE BEST OF MY KNOWLEDGE AND BELIEF.

PROFESSIONAL LAND SURVEYOR

DATE 12/4/2018

### TIE SKETCH

NOTE: THE CORNER FALLS 1± WEST OF THE CENTERLINE OF 11TH AVE AND 2± NORTH OF THE CENTERLINE OF DUCK CREEK DR.



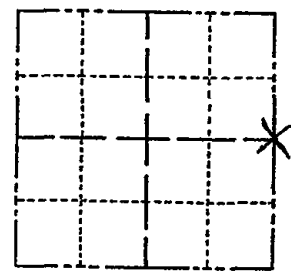
- SET 3/4" x 18" IRON REBAR, 1.50#/FT
- FOUND HARRISON MONUMENT (BROKEN-TOP)
- ∅ WITNESS POWER POLE
- WITNESS STREET SIGN
- VINYL "T" POST
- ☉ WITNESS TREE

ADAMS COUNTY

Survey Monument Record

TYPE OF MONUMENT: Harrison  
STATE PLANE COORDINATES: N \_\_\_\_\_  
E \_\_\_\_\_  
ELEVATION - M.S.L. DATUM: \_\_\_\_\_  
THETA ANGLE: \_\_\_\_\_  
FIELD BOOK: 108 PAGE 22

CORNER NO. 276  
SECTION 29  
TOWN 17  
RANGE 6



LOCATION  
(Indicated by 'X')

SEAL:



BASIS FOR MONUMENT LOCATION

(Use reverse side if necessary)

Show info such as: History of corner, with reference to Vol. and pg, dates, surveyor; exact description of monument replaced; if location computed, by taped or EDM traverse; landowner remarks, etc.

Set on a straight line between NE & SE section corners, and ~~run~~ with at the intersection of a line from Muller Survey to west

Harrison loose but O.K. 9-27-75 STS  
MON. OK TIES OK 3/6/80 AN-SS  
ALL OK 7-18-85 DK  
1-NEW, ALL ELSE OK 6-26-90 JG  
ALL OK 8-3-94 JG.BS  
ALL OK, 2-14-00, JG

CERTIFIED CORRECT:

Anthony B. Kiedrowski  
Registered Land Surveyor

DATE: 9-11-73

TIE SKETCH OK, 1-25-05-JG  
"", 1-20-10 SS

(Show at least four ties)

