

26  
SECTION

17  
TOWN

06  
RANGE

# ADAMS COUNTY

COUNTY CORNER NO: 99

ROMPORTOL ID: 41706262000

## PUBLIC LAND SURVEY MONUMENT RECORD

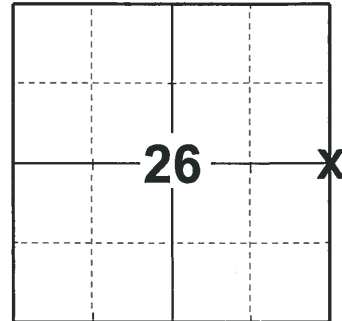
TYPE OF MONUMENT: HARRISON  
ADAMS COUNTY COORDINATES, NAD 83 (2007)

N. 200421.518

E. 552292.848

ELEVATION- \_\_\_\_\_ DATUM \_\_\_\_\_

FIELD WORK DATE: 09/20/2018



**LOCATION**  
(INDICATE CORNER BY "X")

SEAL:



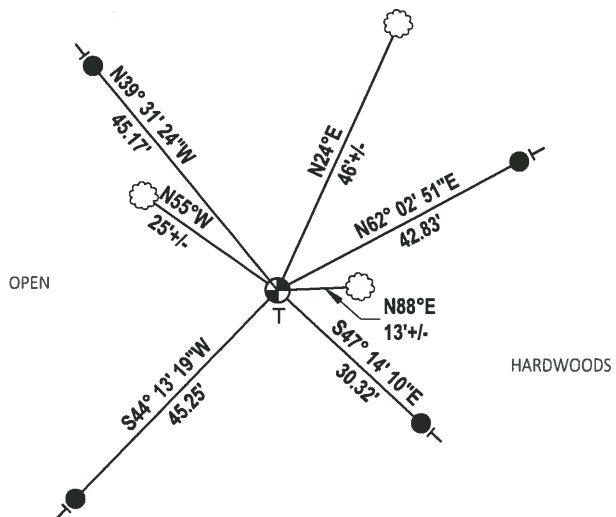
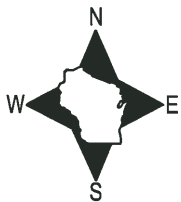
DATA SHOWN HERE ON THIS TIE SHEET IS CORRECT AND COMPLETE TO THE BEST OF MY KNOWLEDGE AND BELIEF.

PROFESSIONAL LAND SURVEYOR

DATE 12/4/2018

### TIE SKETCH

NOTE: THE CORNER FALLS 200'± NORTH OF THE EDGE OF THE SWAMP.

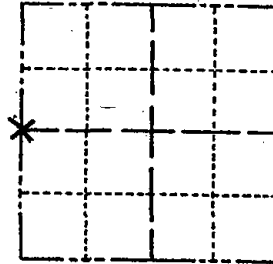


- SET 3/4" x 18" IRON REBAR, 1.50#/FT
- ⊕ FOUND HARRISON MONUMENT
- VINYL "T" POST
- ☁ WITNESS TREE

# Government Land Corner Certificate

ADAMS County  
 TYPE OF MONUMENT: HARRISON SET  
 STATE PLANE COORDINATES: N \_\_\_\_\_  
 E \_\_\_\_\_  
 ELEVATION — M.S.L. DATUM: \_\_\_\_\_  
 THETA ANGLE: \_\_\_\_\_  
 FIELD BOOK: L.L. PAGE \_\_\_\_\_  
 DRAWN BY: M. MARZEFKA

CORNER NO. 99  
 SECTION 25  
 TOWN 17  
 RANGE 6E



LOCATION  
(Indicated by 'X')

## BASIS FOR MONUMENT LOCATION

Show info such as: History of corner, with reference to Vol. and pg., dates, surveyor; exact description of monument replaced; if location computed, by taped or EDM traverse; landowner remarks, etc. (Use reverse side if necessary)

Set Corner equidistant and on line between adjacent Section Corners.

Ran EDM Traverse of the entire area to determine search areas for the Corners in 25-17-6E. An extensive search revealed no evidence as to the location of original Corner or any remonumented Corner.

OK - 1-NEW 9-7-90 SS  
 ALL OK 4-11-00 - JG  
 " " 3-28-05, SS  
 OK 2-5-10 SS

SEAL:



DATA SHOWN HERE ON CERTIFIED CORRECT:

*Wayne Basler*  
 Registered Land Surveyor

DATE: 12-27-79

## TIE SKETCH

Show at least four ties, also fence lines, roads, topo, size and type of witness trees and if off road - best way to arrive at corner.

