

30 SECTION 17 TOWN 06 RANGE

ADAMS COUNTY

COUNTY CORNER NO: 102
 ROMPORTOL ID: 41706300020

PUBLIC LAND SURVEY MONUMENT RECORD

TYPE OF MONUMENT: HARRISON

ADAMS COUNTY COORDINATES, NAD 83 (2007)

N. 197640.844

E. 528485.987

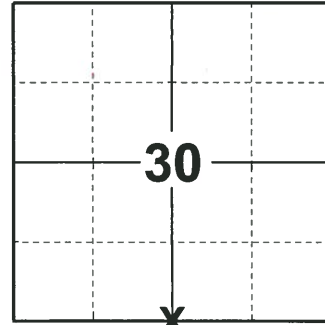
ELEVATION- DATUM

FIELD WORK DATE: 10/16/2018

BASIS FOR MONUMENT LOCATION

1978 - PLS 1267 M.C. SMITH IN 1900, VOL. 1, PG. 95, SET THE CORNER AND WITNESS TIES. A.M. ROBINSON, PRESENT LAND OWNER, REMEMBERS SURVEY AT THAT TIME AND SAID THAT THE WITNESS TIES HAD BEEN BURNED IN A FIRE. HE HAD MAINTAINED A POST AT THE CORNER AND HE SHOWED ME WHERE IT WAS LOCATED. TRAVERSED THE SECTION BY EDM AND IT VERIFIED THE CORNER. THIS LOCATION ALSO FIT VERY WELL AS PER THE GOVERNMENT NOTES FOR THE FRACTIONAL SECTION. JIM CARROLL HAD CALLED FOR A 1" PIPE SET AT THE CORNER BUT IT WAS NOT THERE. SET A HARRISON MONUMENT AT THE CORNER LOCATION AND TIED OUT.

2018 - PLS 2675 FOUND A HARRISON MONUMENT 2" ABOVE THE GROUND SURFACE, 1 TIE, 3 WITNESS TREES AND 1 WITNESS STUMP. THE MONUMENT AGREES WITH THE EXISTING TIE, WITNESS TREES AND WITNESS STUMP. ACCEPTED THE HARRISON MONUMENT AS THE CORNER LOCATION. SET 4 NEW TIES AND MEASURED TO THE TIES, WITNESS TREES AND WITNESS STUMP.



LOCATION

(INDICATE CORNER BY "X")

SEAL:



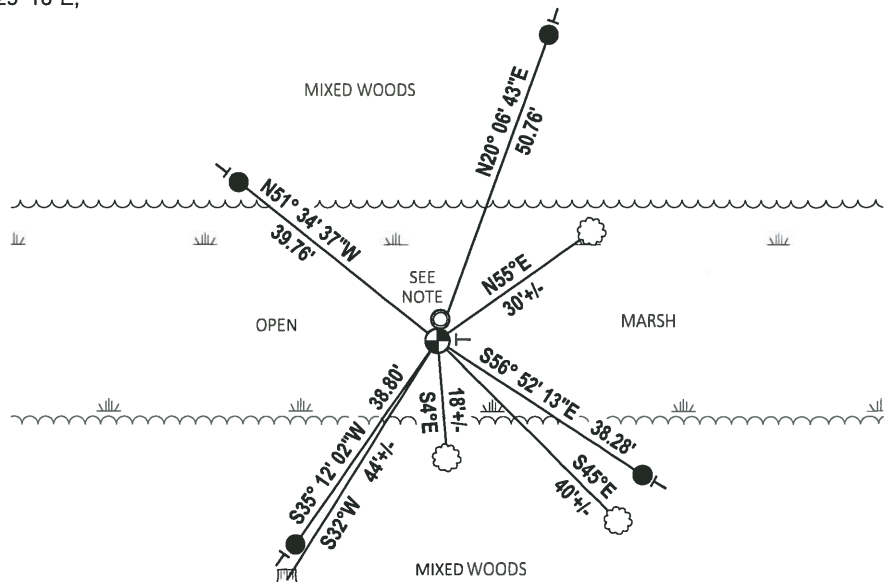
DATA SHOWN HERE ON THIS TIE SHEET IS CORRECT AND COMPLETE TO THE BEST OF MY KNOWLEDGE AND BELIEF.

PROFESSIONAL LAND SURVEYOR

DATE 12/4/2018

- TIE SKETCH

NOTE: THE 1" IRON PIPE WITH A 6' TALL GUARD PIPE PAINTED RE-WHITE-GREEN FALLS N7° 29' 16"E, 3.37' OF THE CORNER LOCATION.



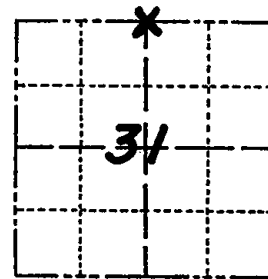
- SET 3/4" x 18" IRON REBAR, 1.50#/FT
- FOUND 1" O.D. IRON PIPE
- ⊙ FOUND HARRISON MONUMENT
- ┆ VINYL "T" POST
- ☼ WITNESS TREE
- ☼ WITNESS TREE STUMP

Government Land Corner Certificate

102

ADAMS County
 TYPE OF MONUMENT: STANDARD HARRISON
 STATE PLANE COORDINATES: N _____
 E _____
 ELEVATION — M.S.L. DATUM: _____
 THETA ANGLE: _____
 FIELD BOOK: 563 PAGE 55
 DRAWN BY: Squire S

CORNER NO. _____
 SECTION 31
 TOWN 17 N
 RANGE 6 E



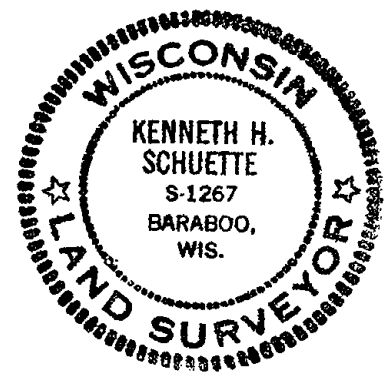
LOCATION
(Indicated by 'X')

BASIS FOR MONUMENT LOCATION

Show info such as: History of corner, with reference to Vol. and pg., dates, surveyor; exact description of monument replaced; if location computed, by taped or EDM traverse; landowner remarks, etc. (Use reverse side if necessary)

M.C. Smith in 1900, Vol. 1, pg. 95, set corner and witness ties. A.M. Robinson, present land owner, remembers survey at that time and said witness ties had been burned over in fire. He had maintained a post at corner over last years and he showed me where it was located. Traversed the section by EDM and verified the corner and it fit very well as per the government notes for the fractional section. Jim Carroll had called for a 1" pipe set at the corner and it was not there.

SEAL:



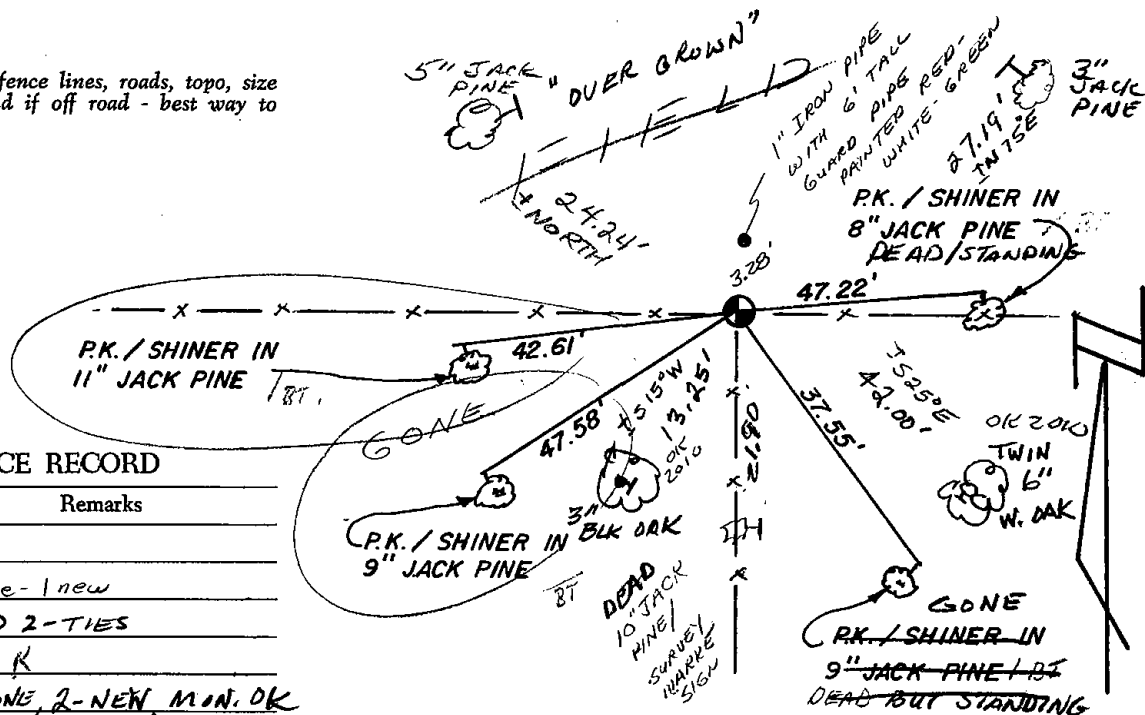
DATA SHOWN HERE ON
CERTIFIED CORRECT:

Ken Schuette
Registered Land Surveyor

DATE: 12 Nov 1978

TIE SKETCH

Show at least four ties, also fence lines, roads, topo, size and type of witness trees' and if off road - best way to arrive at corner.



MAINTENANCE RECORD

Date	Init.	Remarks
4/29/80	RUS	OK
10-28-85	S.S.	2 gone - 1 new
5-23-90	DC-SS	ADD 2-TIES
2-17-95	BR-VG	OK
4-4-08	JG	2-GONE, 2-NEW, MON. OK
3-21-05	JG	OK
1-26-10	SS	OK