

29 SECTION 17 TOWN 06 RANGE

ADAMS COUNTY

COUNTY CORNER NO: 104
 ROMPORTOL ID: 41706290020

PUBLIC LAND SURVEY MONUMENT RECORD

TYPE OF MONUMENT: HARRISON (BROKEN-TOP)

ADAMS COUNTY COORDINATES, NAD 83 (2007)

N. 197656.896

E. 533798.985

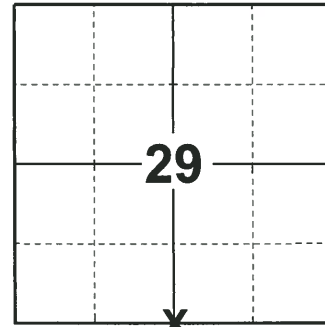
ELEVATION- _____ DATUM _____

FIELD WORK DATE: 10/16/2018

BASIS FOR MONUMENT LOCATION

1973 - PLS 878 FOUND A 3/4" IRON PIPE BUT COULD VERIFY HOW IT GOT THERE OR WHAT IT WAS SUPPOSED TO MARK. CALCULATED THE CORNER LOCATION ON A STRAIGHT LINE AND EQUIDISTANT BETWEEN ADJACENT SECTION CORNERS. SET A HARRISON MONUMENT AT THE CALCULATED LOCATION AND TIED OUT.

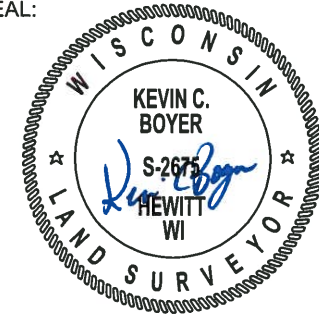
2018 - PLS 2675 FOUND A HARRISON MONUMENT WITH A BROKEN-TOP 8" BELOW THE GROUND SURFACE AND 2 WITNESS TREES. THE MONUMENT AGREES WITH THE EXISTING WITNESS TREES. ACCEPTED THE HARRISON MONUMENT WITH A BROKEN-TOP AS THE CORNER LOCATION. SET 4 NEW TIES AND MEASURED TO THE TIES AND WITNESS TREES.



LOCATION

(INDICATE CORNER BY "X")

SEAL:



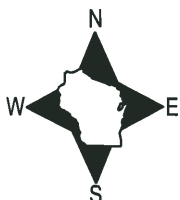
DATA SHOWN HERE ON THIS TIE SHEET IS CORRECT AND COMPLETE TO THE BEST OF MY KNOWLEDGE AND BELIEF.

PROFESSIONAL LAND SURVEYOR

DATE 12/4/2018

- TIE SKETCH

NOTE: THE CORNER FALLS 20'± WEST OF THE CORNER OF THE EAST-WEST FENCE LINE.



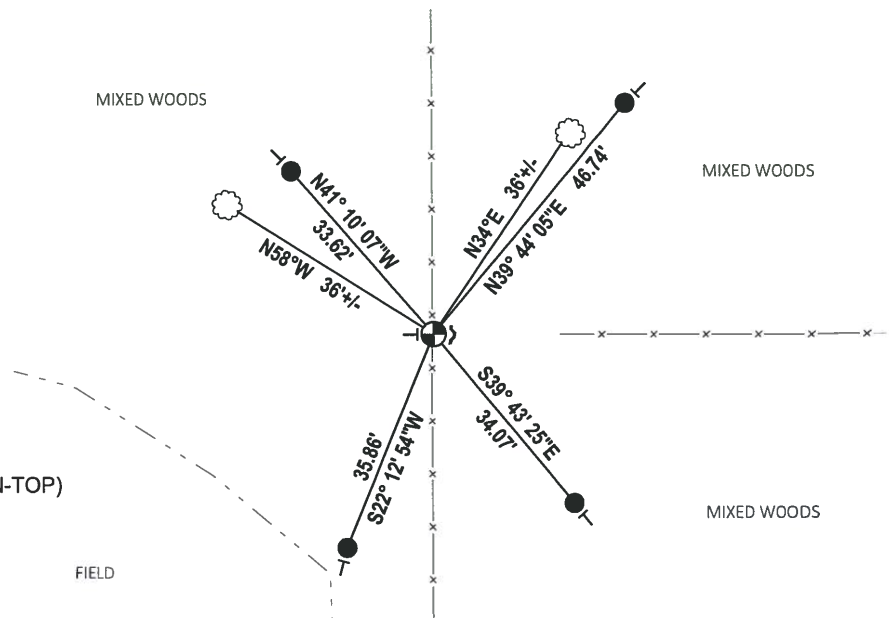
MIXED WOODS

MIXED WOODS

MIXED WOODS

FIELD

- SET 3/4" x 18" IRON REBAR, 1.50#/FT
- ⊕ FOUND HARRISON MONUMENT (BROKEN-TOP)
- ↙ STEEL FENCE POST
- ┊ VINYL "T" POST
- ☁ WITNESS TREE



ADAMS COUNTY

Survey Monument Record

TYPE OF MONUMENT: Harrison standard

STATE PLANE COORDINATES: N _____

E _____

ELEVATION — M.S.L. DATUM: _____

THETA ANGLE: _____

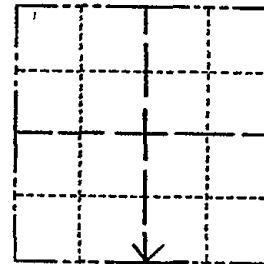
FIELD BOOK: 108 PAGE 47

CORNER NO. 289

SECTION 29

TOWN 17

RANGE 6



LOCATION
(Indicated by 'X')

SEAL:

BASIS FOR MONUMENT LOCATION

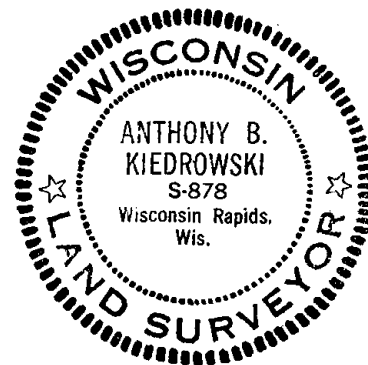
(Use reverse side if necessary)

Show info such as: History of corner, with reference to Vol. and pg, dates, surveyor; exact description of monument replaced; if location computed, by taped or EDM traverse; landowner remarks, etc.

Set on a straight line equidistant between section corners.

Note:

We found a 3/4" iron pipe as shown below, but could not verify how it got there or what it's supposed to mark. if anything.



MON + TIES OK 4/29/80 RN-SS
 " " 9-16-85 GR-SS
 ALL OK 1990 KE
 " 1 NEW TIE 1995 GL-JG
 2-GONE, 2-NEW, MON. OK, 4-4-00-JG

CERTIFIED CORRECT:

Anthony B. Kiedrowski
 Registered Land Surveyor

DATE: 9/18/73

TIE SKETCH 1-GONE, 1-NEW, 3-21-05, JG

(Show at least four ties)

Ties are to nail and disc.

